

Solution® Series expands to

Solution Poly-Round® bearings in polymer OR stainless housings

Select the style that fits your needs and budget



Value Polymer



Value Plus Polymer



Guaranteed Polymer



Value Cast Stainless



Value Plus Cast Stainless



Guaranteed Cast Stainless



Guaranteed Machined SS

- Poly-Round® bearings are ideal on straight running conveyors with wire belts or thermoplastic sprocket-driven belts
- Other processing applications can also benefit from Poly-Round® bearings
- 100% grease-less (no lube ever)
- Non-corrosive units mean 'red water' will not be an issue
- USDA-accepted bearings ideal for HACCP and HARPC programs
- Longer life with more reliability than ball bearings in tough service, such as:
 - Food contact
 - Wash-down
 - Process moisture
 - Intermittent operation
 - Weather
 - Packaging, dust, powders



BY TIMKEN

Poly-Round® Bearings for the Process Floor

The best choice for straight-running sprocket-driven conveyors

- No lube
- No seals or shields
- No rolling elements
- No maintenance
- No rust or process contamination

1 Select the appropriate bearing material based on speed and load

5/8", 3/4", 20 mm 204 Group B								1", 25 mm 205 Group C								1-3/16", 1-1/4" 30 mm 206 Group D								
Speed in RPM								Speed in RPM								Speed in RPM								
30 45 60 90 117 175								30 45 60 90 117 175								30 45 60 90 117 175								
50	AA	AA	AA	AA	AA	AA	AA	50	AA	AA	AA	AA	AA	AA	AA	AA	50	AA	AA	AA	AA	AA	AA	AA
75	AA	AA	AA	AA	AA	AA	AA	75	AA	AA	AA	AA	AA	AA	AA	AA	75	AA	AA	AA	AA	AA	AA	AA
100	AA	AA	AA	AA	AA	AA	AA	100	AA	AA	AA	AA	AA	AA	AA	AA	100	AA	AA	AA	AA	AA	AA	AA
125	AA	AA	AA	AA	AA	AA	AA	125	AA	AA	AA	AA	AA	AA	AA	AA	125	AA	AA	AA	AA	AA	AA	AA
150	AA	AA	AA	AA	AA	AA	AA	150	AA	AA	AA	AA	AA	AA	AA	AA	150	AA	AA	AA	AA	AA	AA	AA
200	AA	AA	AA	AA	AA	AA	AA	200	AA	AA	AA	AA	AA	AA	AA	AA	200	AA	AA	AA	AA	AA	AA	AA
225	AA	AA	AA	AA	AA	AA	AA	225	AA	AA	AA	AA	AA	AA	AA	AA	225	AA	AA	AA	AA	AA	AA	AA
250	AA	AA	AA	AA	AA	AA	AA	250	AA	AA	AA	AA	AA	AA	AA	AA	250	AA	AA	AA	AA	AA	AA	AA
275	AA	AA	AA	AA	AA	AA	AA	275	AA	AA	AA	AA	AA	AA	AA	AA	275	AA	AA	AA	AA	AA	AA	AA
300	AA	AA	AA	AA	AA	AA	AA	300	AA	AA	AA	AA	AA	AA	AA	AA	300	AA	AA	AA	AA	AA	AA	AA
400	AA	AA	AA	AA	AA	AA	AA	400	AA	AA	AA	AA	AA	AA	AA	AA	400	AA	AA	AA	AA	AA	AA	AA
500	AA	AA	AA	AA	AA	AA	AA	500	AA	AA	AA	AA	AA	AA	AA	AA	500	AA	AA	AA	AA	AA	AA	AA

1-1/4", 1-7/16" 207 Group E								1-1/2" 208 Group F							
Speed in RPM								Speed in RPM							
30 45 60 90 117 175								30 45 60 90 117 175							
50	AA	AA	AA	AA	AA	AA	AA	50	AA	AA	AA	AA	AA	AA	AA
75	AA	AA	AA	AA	AA	AA	AA	75	AA	AA	AA	AA	AA	AA	AA
100	AA	AA	AA	AA	AA	AA	AA	100	AA	AA	AA	AA	AA	AA	AA
125	AA	AA	AA	AA	AA	AA	AA	125	AA	AA	AA	AA	AA	AA	AA
150	AA	AA	AA	AA	AA	AA	AA	150	AA	AA	AA	AA	AA	AA	AA
200	AA	AA	AA	AA	AA	AA	AA	200	AA	AA	AA	AA	AA	AA	AA
225	AA	AA	AA	AA	AA	AA	AA	225	AA	AA	AA	AA	AA	AA	AA
250	AA	AA	AA	AA	AA	AA	AA	250	AA	AA	AA	AA	AA	AA	AA
300	AA	AA	AA	AA	AA	AA	AA	300	AA	AA	AA	AA	AA	AA	AA
450	AA	AA	AA	AA	AA	AA	AA	450	AA	AA	AA	AA	AA	AA	AA
550	AA	AA	AA	AA	AA	AA	AA	550	AA	AA	AA	AA	AA	AA	AA
850	AA	AA	AA	AA	AA	AA	AA	850	AA	AA	AA	AA	AA	AA	AA

2 Select the bearing series you need

Value Series
AA Poly-Round® insert



- White polymer insert rated for continuous operating temperatures up to 160°F
- Ideal for light to moderate loads
- USDA/FDA accepted for direct food contact
- Narrow design closely retrofits ball bearings
- Unaffected by wash-down chemicals and most process fluids

Value Plus Series
NA Poly-Round® insert



- Gray polymer insert rated for continuous operating temperatures up to 180°F
- Ideal for medium loads; 30% more load capacity than Value Series
- USDA/FDA accepted for incidental food contact
- Narrow design closely retrofits ball bearings
- Unaffected by wash-down chemicals and most process fluids

Guaranteed Series
NA Poly-Round® insert with DoubleLock® sleeve



- Same material as Value Plus, AND a 316 ss shaft protector:
 - Longer length thru bore increases load capacity, stability and life
 - Sleeve extends bearing life, "fixes" worn shaft, protects good shaft, serves as a locking collar
 - GUARANTEED** for 2 years with ZERO maintenance on straight-running sprocket-driven conveyors
 - Reusable components extend the cost savings

3 Select the housing you want

KG Polymer 'G'



- Stronger and more resistant to process chemicals than injection molded housings
- Smooth, solid construction designed with highest levels of sanitation in mind
- USDA/NSF accepted

304 Cast Stainless Steel 'P'



- Very corrosion resistant
- Durable, functional, directly interchanges US-standard dimension
- Great price to performance

304 Machined Stainless Steel 'A'



- Very corrosion resistant
- Smooth, solid construction designed with highest levels of sanitation in mind
- USDA/NSF accepted
- Stronger than cast stainless

4 Select the style you need

Find the correct shaft size, check the critical dimensions for fit, and identify the part number of the mounted bearing you want.

1 Series																																	
Ring	Shaft Size	Value		Value Plus		Guaranteed with DoubleLock® Sleeve			Z			V			Q			R			P min			P max			T	M			MA Guaranteed		
		Polymer	SS	Polymer	SS	Polymer	SS	Machined SS	G	P	A	G	P	A	G	P	A	G	P	A	G	P	A	G	P	A	Bolt Dia.	G	P	A	G	P	A
		5/8	AA1GB3-10	AA1PB3-10	NA1GB3-10	NA1PB3-10	NA1GBP-10-LK	NA1PBP-10-LK	NA1ABP-10-LK	1.31	2.69	2.56	2.56	5.25	5.00	5.25	1.38	1.50	1.13	3.25	3.37	3.25	4.38	4.11	4.38	3/8	1.07	1.13	0.94	1.79	1.85	1.66	

2 Series																														
Ring	Shaft Size	Value		Value Plus		Guaranteed with DoubleLock® Sleeve			V			P			Q			R			N			T	M			MA Guaranteed		
		Polymer	SS	Polymer	SS	Polymer	SS	Machined SS	G	P	A	G	P	A	G	P	A	G	P	A	G	P	A	Bolt Dia.	G	P	A	G	P	A
		5/8	AA2GB3-10	AA2PB3-10	NA2GB3-10	NA2PB3-10	NA2GBP-10-LK	NA2PBP-10-LK	NA2ABP-10-LK	4.41	4.45	4.41	3.53	2.69	2.36	2.42	0.95	1.00	0.95	0.44	0.43	0.44	3/8				0.97			1.69

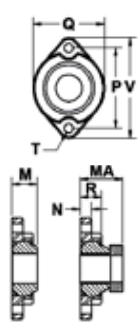
3 Series																																
Ring	Shaft Size	Value		Value Plus		Guaranteed with DoubleLock® Sleeve			Z			V			P			Q			R			T			M			MA Guaranteed		
		Polymer	SS	Polymer	SS	Polymer	SS	Machined SS	G	P	A	G	P	A	G	P	A	G	P	A	G	P	A	Bolt Dia.	G	P	A	G	P	A		
		5/8	AA3GB3-10	AA3PB3-10	NA3GB3-10	NA3PB3-10	NA3GBP-10-LK	NA3PBP-10-LK	NA3ABP-10-LK	1.68	1.69	1.69	4.34	4.25	4.25			1.50	2.56	2.50	2.50	0.95	0.94	0.95	3/8	1.07	1.13	0.94	1.79	1.85	1.66	

4 Series																														
Ring	Shaft Size	Value		Value Plus		Guaranteed with DoubleLock® Sleeve			V			W			R			N			T (Bolt Dia.)			M			MA Guaranteed			
		Polymer	SS	Polymer	SS	Polymer	SS	Machined SS	G	P	A	G	P	A	G	P	A	G	P	A	G	P	A	Bolt Dia.	G	P	A	G	P	A
		5/8	AA4GB3-10	AA4PB3-10	NA4GB3-10	NA4PB3-10	NA4GBP-10-LK	NA4PBP-10-LK	NA4ABP-10-LK	3.38	3.39	3.38	2.50	2.52	2.50	0.95	0.94	0.95	0.44	0.43	0.44				3/8				0.97	

9 Series																																
Ring	Shaft Size	Value		Value Plus		Guaranteed with DoubleLock® Sleeve			Z			V			P			Q			R			T			M			MA Guaranteed		
		Polymer	SS	Polymer	SS	Polymer	SS	Machined SS	G	P	A	G	P	A	G	P	A	G	P	A	G	P	A	Bolt Dia.	G	P	A	G	P	A		
		5/8	AA9GB3-10	AA9PB3-10	NA9GB3-10	NA9PB3-10	NA9GBP-10-LK	NA9PBP-10-LK	NA9ABP-10-LK	1.31	2.58	2.56	2.53	2.00	2.96	2.99	2.88			1.13	3/8			0.94				1.66				

- Other shaft sizes and housing styles are available
- Guaranteed Series replacement component part numbers for re-order can be clarified with your EDT factory salesperson

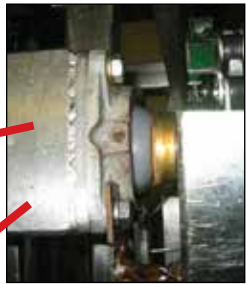
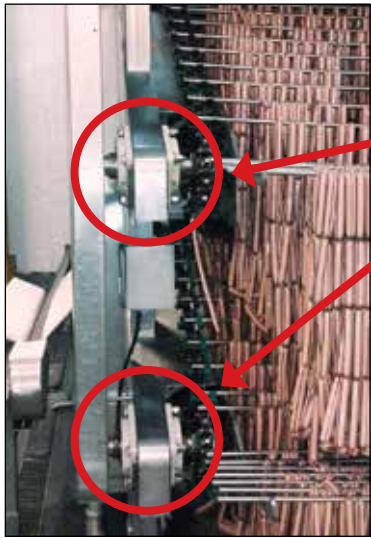
		6 Series																	
Ring	Shaft Size	Value		Value Plus		Guaranteed			V	P	Q	R	N	T	M		MA Guaranteed		
		Polymer	SS	Polymer	SS	Polymer	SS	Machined SS							Bolt Dia.	G	A	G	A
204	5/8	AA6GB3-10	AA6PB3-10	NA6GB3-10	NA6PB3-10	NA6GBP-10-LK	NA6PBP-10-LK	NA6ABP-10-LK											
	3/4	AA6GB3-12	AA6PB3-12	NA6GB3-12	NA6PB3-12	NA6GBP-12-LK	NA6PBP-12-LK	NA6ABP-12-LK	3.56	2.81	2.42	0.86	0.42	5/16	0.88			1.60	
	20mm	AA6GB3-20M	AA6PB3-20M	NA6GB3-20M	NA6PB3-20M	NA6GBP-20M-LK	NA6PBP-20M-LK	NA6ABP-20M-LK											
205	1	AA6GC3-16		NA6GC3-16		NA6GCP-16-LK		NA6ACP-16-LK	3.75	3	2.72	0.81	0.42	5/16	0.90	0.94	1.62	1.66	
	25mm	AA6GC3-25M		NA6GC3-25M		NA6GCP-25M-LK		NA6ACP-25M-LK											
206	1-3/16	AA6GD3-19		NA6GD3-19		NA6GDP-19-LK		NA6ADP-19-LK	4.44	3.56	3.09	0.96	0.47	3/8	1.05			1.86	
	1-1/4	AA6GD3-20		NA6GD3-20		NA6GDP-20-LK		NA6ADP-20-LK											
	30mm	AA6GD3-30M		NA6GD3-30M		NA6GDP-30M-LK		NA6ADP-30M-LK											
207	1-1/4	AA6GE3-20		NA6GE3-20		NA6GEP-20-LK		NA6AEP-20-LK	4.94	3.94	3.5	0.96	0.5	3/8	1.06			2.03	
	1-7/16	AA6GE3-23		NA6GE3-23		NA6GEP-23-LK		NA6AEP-23-LK											



For applications all around the process floor, Poly-Round® bearings are grease-free, non-rusting, clean and reliable



Value Polymer



Guaranteed Cast Stainless



Value Cast Stainless



Guaranteed Polymer



Guaranteed Machined Stainless



Value Plus Cast Stainless

Poly-Round® Two-Year Guarantee!

On straight modular plastic and wire belt conveyors, a Poly-Round® bearing with a sleeve is **GUARANTEED** to operate at least 24 months with low/no maintenance or EDI will replace it with the bearing of your choice.

- At www.edtcorp.com, find:
- Technical information about AA, NA and other bearing materials
 - Installation and maintenance instructions (User Handbook) AND links to YouTube installation demos
 - Bearing Design Checklist for assistance with your specific application
 - Additional copies of this and other materials



BY TIMKEN