

Bearing Glove®

Assemble and install Bearing Glove® onto equipment

The Bearing Glove surrounds a two bolt bearing (typically a ball bearing) with 360 degrees of protection from solid contaminants including:

- abrasives
- bulk solids
- powders

The EDT Bearing Glove® is designed to be a self-sufficient installation. The three piece assembly of:

- cover
- any brand of 2-bolt flange bearing
- base with seal

completely encases the bearing to provide a contaminant-free area of operation around the shaft and bearing.

The Glove® cover has a built-in tab that snaps over a notch in the base. However, in some situations, the tab may not keep the pieces together as securely as needed. Here are different ways of securing the components. Choose the one that best fits your specific application.

1. Bolt bearing and Glove® base to machine frame. Note slot direction on base in Fig 16-1.
2. Snap Glove® cover over bearing assembly as per Fig 16-1.
3. Some Glove® sizes use push-in fasteners that are supplied.

Alternative assembly #2

1. Assemble Glove® and bearing as in Option 1.
2. Drill a small hole through the wall of the Glove® cover and into the edge of the base. See Fig 16-2.
3. Install self-tapping screw to secure. Use as many screws as you feel are required for your application.

The Glove® is not intended for on/off bearing coverage. Installations that require frequent access to the insert should consider bearing caps or EDT's Kleen®Cage®.

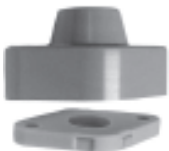


Fig 16-1

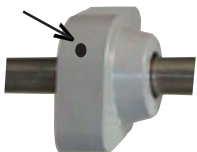


Fig 16-2

continued on next page...

Bearing Glove®

Assemble and install Bearing Glove® onto equipment

Option 3 Hardware Specifications for different sizes of The Glove®

Alternative Assembly #3

1. Assemble Glove® and bearing as shown in Fig 17-1 using all-thread or fully threaded bolt, nuts and washers.
2. Mark drill location from Glove® base onto Glove® cover and drill 17/32 bolt hole in Glove® cover.
3. Optional - Filling the front and back cavities of the Glove® base and cover with grease will provide an additional level of protection for bearing. The cavities can be hand packed or can be filled from a grease fitting after assembly. If grease fitting is desired, find best location based on bearing being used and drill and install fitting in Glove® cover. Fitting removed from bearing housing may be used.
4. Slip bolts through outside of cover and through hex nuts on inside of cover. Slide the bearing into the Glove® cover and adjust nuts until the bottom of the bearing housing flange is flush with the bottom edge of the Glove® cover. This is designed to maintain the spacing between the cover and the bearing housing flange.

	Qty	C Glove® (205 ring)	F Glove® (208 ring)	H Glove® (210 ring)
ss all-thread	2 ea	7/16" x 2-1/4" long	1/2" X 3" long	1/2" x 3-1/2" long
Drill holes		15/32"	17/32"	17/32"
ss hex nuts	6 ea	7/16"	1/2"	1/2"
ss flat washer	6 ea	7/16"	1/2"	1/2"
Option if packing with grease to keep out liquid contaminants		<ul style="list-style-type: none"> • Add 4 each rubber flat washers • Drill cover to accept grease fitting. (Take the fitting off the 2-bolt bearing and screw it into the cover.) 		

5. If using option of hand packed grease as secondary seal inside the cover - complete now before assembling unit
6. Assemble unit.
7. Install full assembly onto machine frame. Use optional rubber washer as required for your specific application.

Fig 17-1

