

Mounted Bearings

Installation of mounted bearings onto equipment



Note There are TWO setscrews through the outside of the EDT housing and both are preset at the factory and do not require field adjustment.

Step 1 Mount bearing and housing assembly onto machine. Bolt pressure should not exceed 25-30 foot/pounds of torque no matter what kind of housing (polymer, stainless steel and standard cast metal) you are mounting.

Bolt pressure should not exceed 25–30 foot-pounds of torque.

All housings (steel and polymer) should be installed with a flat washer under the hex head of the bolt. Use of a lock washer is at the discretion of the installer and should be mounted **above** the flat washer (see Fig 9-1).

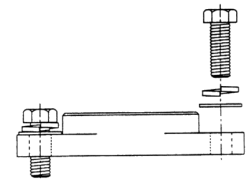


Fig 9-1

Step 2 Slide locking sleeve into the bearing and place it against the side of the bearing. On Poly-Round® units, locking sleeve may thrust against either side of the insert where it will not run against metal; on All-Round® units, locking sleeve must thrust against flange of polymer bearing.

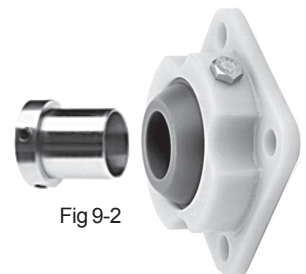


Fig 9-2

Leave a .005 gap (paper thickness) between the SS flange of the locking sleeve and the side of the bearing (see Fig 9-2).

Mount bearing and housing assembly onto machine. Slide locking sleeve into bearing bore and against the side of the bearing. Leave a .005 gap (paper thickness) between the SS flange of the locking sleeve and the side of the bearing (see Fig 9-3).

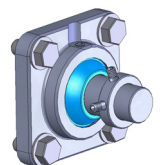


Fig 9-3

Step 3 After the bearings are mounted, and before drives and belts (or other devices) are installed, make sure that the shaft freewheels inside the bearings. If not, the bearing must be adjusted inside the housing to better align with shaft. Attach drive mechanisms and belts only after shaft freewheeling is confirmed.

Step 4 Run equipment. EDT Poly-Round® bearings will run warmer than ball bearings but should never run so warm that you cannot hold your hand on the bearing. If it runs warmer than your hand can tolerate, and Step 3 above has been accomplished, refer to the Troubleshooting Guide on page U-26. EDT welcomes your call to the factory for troubleshooting or other assistance.

See pages U-18 thru 22 for Special Application Conditions