



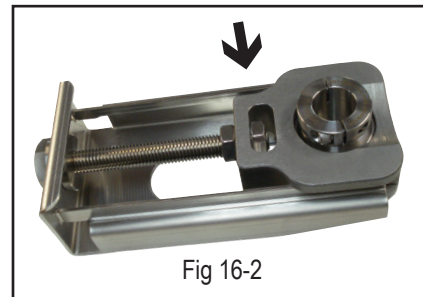
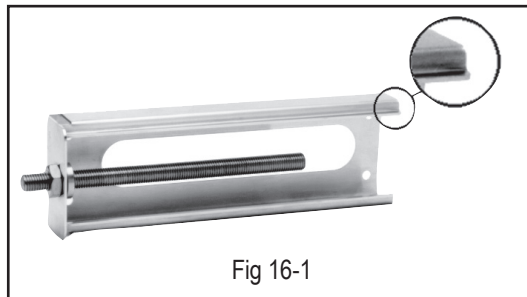
Assembling and installing take-up frame onto equipment

EDT stainless steel take-up frames (Fig 16-1) are designed to bolt or weld directly onto a machine frame. Both narrow and wide slot designs are available which accept all industry standard housings. EDT stainless take-up units are made from a heavy gage of folded stainless sheet metal and will accommodate most loads. Applications with extreme side loading may require a heavier unit. A load large enough to damage a frame will also bend the shaft.



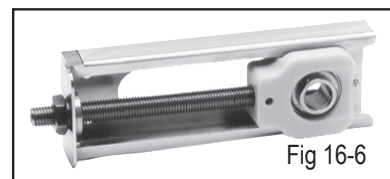
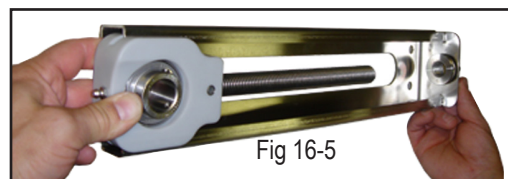
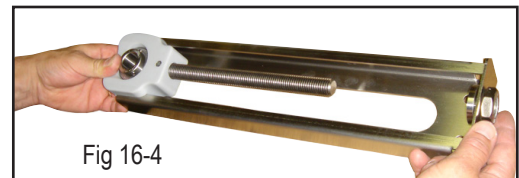
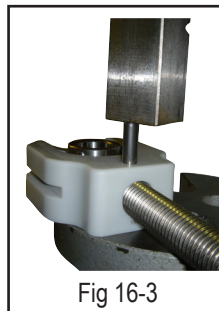
Wide slot installation

The tensioning screw with wide slot housings can be installed either before or after the housing is installed on the rail. The end of the tension screw will reside in the open hole at one end of the housing and extend into the adjustment nut slot. There will be one stainless nut in that slot and another on the tensioning screw outside the housing that will tighten up against the flat end of the housing. The pair of these nuts will keep the screw from moving out of position during operation. All of the stainless hardware is included with the take-up frame when shipped (see Fig 16-2).



Narrow slot installation

The tensioning screw with all narrow slot housings utilizes a split pin to attach the housing. Any split pin installation after the housing is installed in the take-up frame is inviting a failure of the slot and is not recommended. The tensioning screw should first be installed in the housing while the housing can be fully supported behind the pin. This is best accomplished with a small arbor press or a drill press (see Figs 16-3 through 16-6).



For Special Application Conditions..... See pages U-20 thru U-23