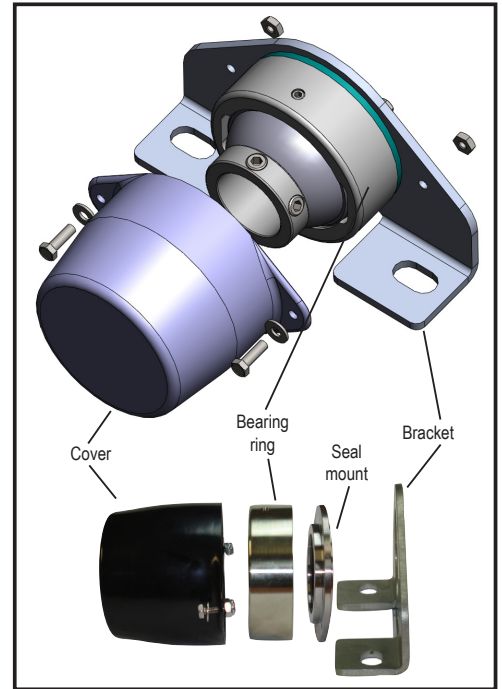




BEARINGS FOR SEVERE SERVICE ENVIRONMENTS

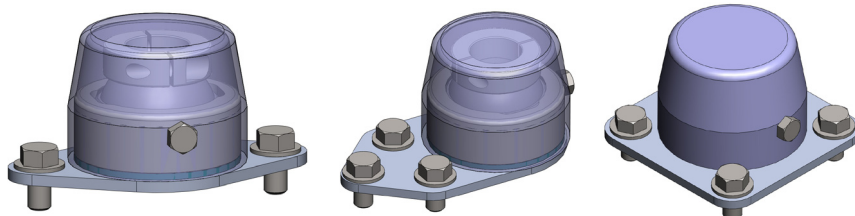
The Bearing Glove®

EDT's Glove® 2 provides COVER in all kinds of locations

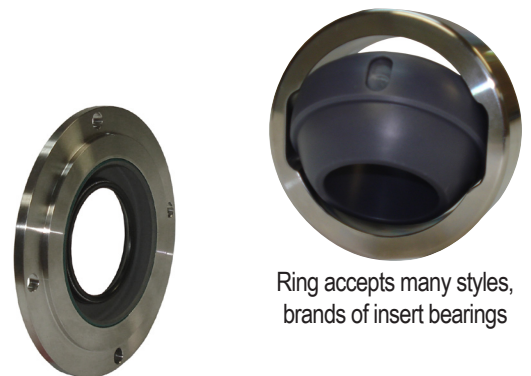


360° sealing protection: Inside from out, and outside from in

- Safety protection from rotating shafts
Durable protection from solid contaminants
- Retain the backing height, length-thru-bore, center distance of equipment's original design
- Non-rusting components: stainless steel, plastic and ss hardware



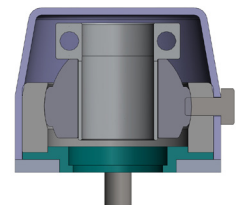
Adaptable to any style of housing



Exclusionary seal on the back

Ring accepts many styles, brands of insert bearings

205 and 207 sizes currently available

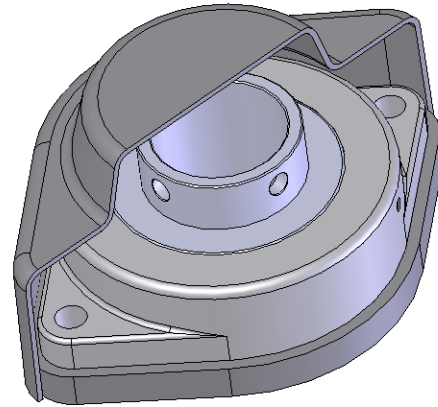
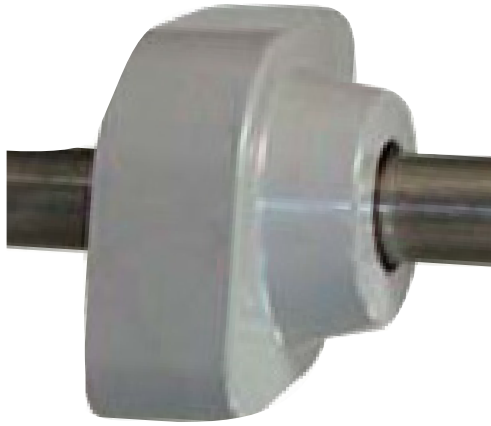


Deep cover accommodates DoubleLock® sleeves and eccentric lock inserts

EDT's Original Glove®

uses any brand 2-bolt bearing to retrofit
2-bolt, 4-bolt, pillow blocks

Shaft sizes 3/4" – 2-3/4" (25mm -70 mm)



- Full sealing protection to reduce maintenance and eliminate regreasing
- Provides complete OSHA protection for rotating shafts
- Smooth surfaces and rounded edges for maximum cleanability
- Use with any brand of bearing (ball bearing recommended)



3-piece assembly of standard and stocked parts



Cover (with seal if thru-bore)

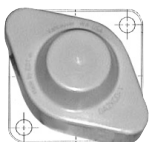


Bearing (use any brand; ball bearing recommended)



Base + seal

4-Bolt with EDT bearing Glove®



Pillow Block shown without EDT Glove®, and as Glove® retrofit



Note: Glove® pillow block backing height is higher than standard.