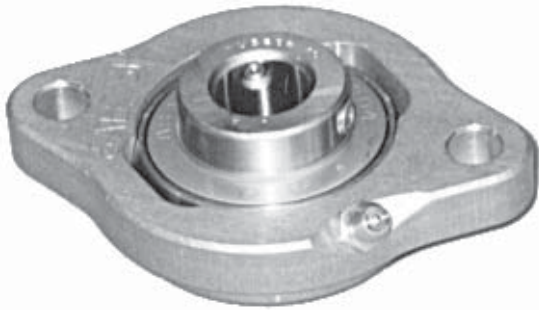




STAINLESS SOLUTION[®] PILOTED TWO-BOLT



Use on drive locations:
Stainless Ball Solution[®]



Use all locations, except drives:
Stainless Poly-Round[®] Solution[®]

Piloted fryer bearings available in 2 models

- Direct interchange for Linkbelt FXR-UG212
- No coatings or plating to chip or peel
- Designed for HACCP
- Flat mounting surfaces
- Smoothest surface finish in industry
- Sanitary and easy to clean
- Interchanges with Linkbelt FXR -UG212,
-U212
-W212U
-YG212



APPLICATIONS:

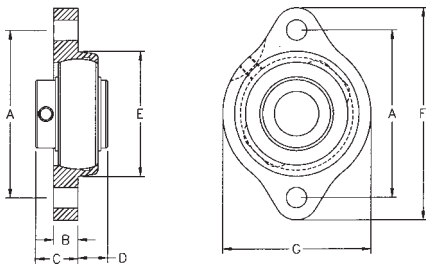
- Stein breaders, including models: XL-34, SL-40, XL-48
- Stein fryers
- Most food & chemical applications
- Pharmaceutical

for use on
DRIVE
applications

Stainless Ball Solution®



- Stainless steel housing, ball bearing and hardware for corrosion resistance and durability
- Choose from regreasable or solid lubricated bearings
- Temperature rated to to 250°F on regreasable units or 450°F on solid lubricated
- Reuseable housing (6AB-SP)
- Regreasable units: temperature rated to 250°F (p/n prefix: ZY)
Solid lubricated units: temperature rated to 450°F (p/n prefix: ZM)



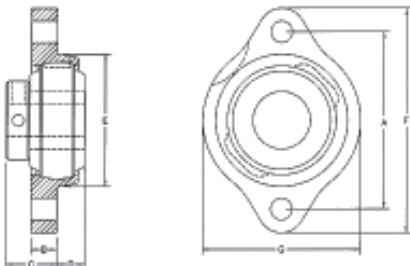
P/N GROUP (RING) I.D.	Shaft Diameter in.	A	B	C	D	E	F	G	Bolt Size	Wt. in lbs.
		in. mm	in. mm	in. mm	in. mm	in. mm	in. mm	in. mm		
6AB-SP8- B (204) 1.850 47	3/4	2-13/16 71.4	27/64 10.7	23/32 18.3	29/32 23.0	2-1/8 54.0	3-9/16 90.5	2-7/32 56.4	5/16	.8

* -- = **ZY** for regreasable unit -or-
ZM for solid lubricated unit

GUARANTEED for
1 year in
NON-DRIVE
applications!

Stainless Poly-Round® Solution®

- 'FA' material plane bearing eliminates rolling element maintenance
- Grease-less
- Zero-maintenance
- Fully non-corrosive components
- Fully sanitary (USDA direct and continuous food contact approved)
- Reuseable housing (6AB-SP) -
can replace bearing and sleeve only (FAIUB7-SP-3/4)
- Temperature rated to 500°F



P/N GROUP (RING) I.D.	Shaft Diameter in.	A	B	C	D	E	F	G	Bolt Size	Wt. in lbs.
		in. mm	in. mm	in. mm	in. mm	in. mm	in. mm	in. mm		
FA6AB-SP7- B (204) 1.850 47	3/4	2-13/16 71.4	13/32 10.3	13/16 20.6	27/64 10.7	2-7/64 53.6	3-9/16 90.5	2-1/2 63.5	5/16	.8