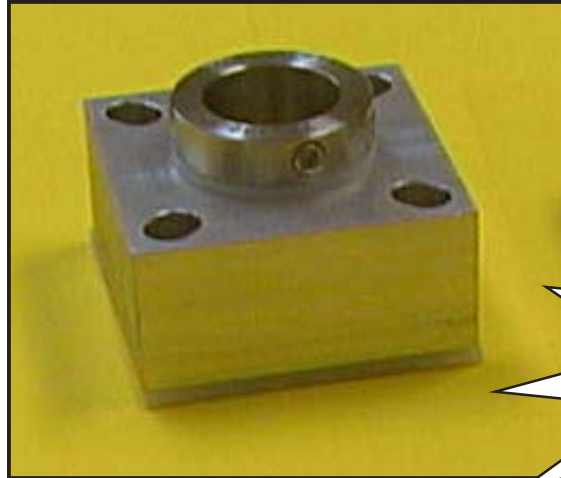




STAINLESS & POLYMER BREADER BEARING



some applications
getting
3 to 6 months
life with
NO maintenance

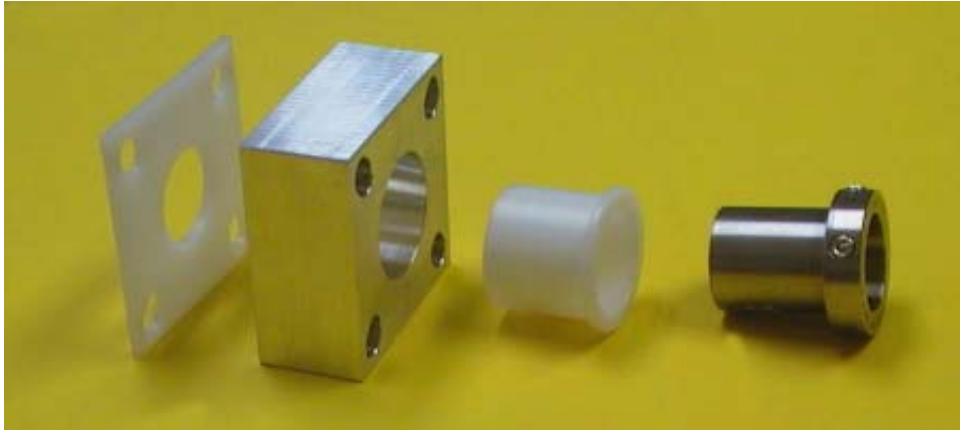
Breder bearing made of 100% direct-food contact-approved materials

- Direct retrofit for stacked metal and bronze 4-bolt bearing
- Zero lubrication decreases maintenance time
- Eliminates contamination
- Lower inventory cost by stocking only the wear components
- Designed for HACCP







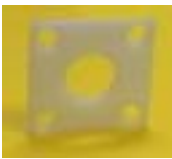
Features of EDT Breeder Bearings

- White, food-grade polymer bearing in stainless block with stainless locking sleeve
- Plastic backing plate is a food-grade exclusionary seal
- Sanitary and non-contaminating
- No grease
- All smooth, solid construction



Interchange EDT Breeder Bearings for wire belt- and sifter- shafts on Stein Models:

XL-34
 XL-40
 Flour Max
 and others

<u>Part Numbers</u>		
Assembly with 1-3/4" bolt distance Assembly with 1-7/8" bolt distance		AAZA100-1 (shaft size) AAZA101-1
stainless 4-bolt block		ZA100 (1-3/4" bolt distance) -or- ZA101 (1-7/8" bolt distance)
316-stainless locking sleeve		ZAL100-1 (shaft size)
flanged polymer bearing		AAB100-C
plastic backing plate		PA100-1 (1-3/4" bolt distance) -or- PA101-1 (1-7/8" bolt distance)