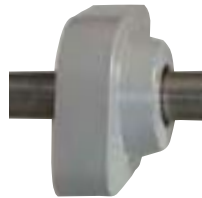




THE BEARING GLOVE®

360° shield from solid contaminants

**With the EDT Bearing Glove® ...
run bearings in bulk solids, powders, abrasives
...like you have never run them before!**



- Uncompromised sealing that standard bearing shields and seals do not provide
- Thru-bore and blind-bore styles
- Provides complete OSHA protection for rotating shafts
- More sanitary and more secure than traditional industry caps
- Snaps on/off for maintenance and cleaning
- Eliminates maintenance in solid contaminate locations
- Use with any brand of bearing

**Now Available
in sizes including
1", 1-1/2", 1-15/16",
2-1/2", 2-5/8"
& many others**

Retrofit :

4-bolts



and pillow blocks

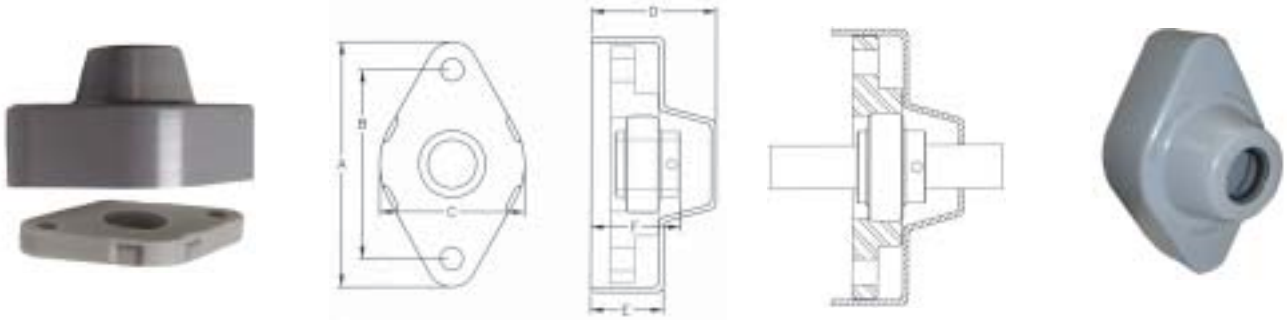


with the Glove® + any brand 2-bolt bearing

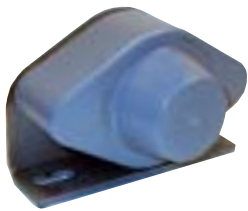
EDT CORP
1006-J NE 146th Street
Vancouver, WA 98685
email: edtsales@edtcorp.com

PH 360-574-7294
FAX 360-574-3834
PINK 1103
I-1.5

Extend Bearing Life with a 360° Seal Against Solid Contaminants



| 2-BOLT GLOVE® ASSEMBLY P/N | Shaft Diameter | A | B | C | D | E | F | Bolt Size | Wt. in lbs. |
|-------------------------------|--------------------------------------------------------------|---------------|---------------|---------------|--------------|--------------|--------------|-----------|----------------|
| | | in. mm | in. mm | in. mm | in. mm | in. mm | in. mm | | |
| GA2UCO- C (205) | 3/4 7/8 15/16 1 | 5.25 133.3 | 3.89 98.8 | 3.23 82.0 | 2.61 66.3 | 1.53 38.8 | 1.87 47.5 | 7/16 | .3 |
| GA2UFO- F (208) | 1-7/16 1-1/2 1-9/16 1-5/8 | 7.26 184.1 | 5.66 143.6 | 4.93 125.2 | 3.44 87.3 | 2.13 53.9 | 2.31 58.7 | 1/2 | .7 |
| GA2UHO- H (210) | 1-11/16 1-3/4 1-13/16 1-7/8 1-15/16 2 50mm | 7.96 202.2 | 6.19 157.2 | 5.48 139.1 | 3.50 88.9 | 2.19 55.5 | 2.56 65.0 | 1/2 | .8 |
| GA2UKO- K (214) | 2-7/16 2-1/2 2-5/8 2-3/4 70mm | 10.3 261.6 | 8.31 211.1 | 7.43 188.7 | 5.0 127.0 | 3.37 85.6 | 4.0 101.6 | 5/8 | .8 |



| PILLOW BLOCK ASSEMBLY P/N | Shaft Diameter | G | H | I | J | K | L | M | N | O | P | Q | Hsg Bolt | Wt. in lbs. |
|------------------------------|--------------------------------------------------------------|--------------|---------------|-------------|--------------|--------------|--------------|---------------|---------------|---------------|--------------|--------------|-----------------|-------------------|
| | | in. mm | in. mm | in. mm | in. mm | in. mm | in. mm | in. mm | in. mm | in. mm | in. mm | in. mm | Bracket Bolt | |
| GA1UCO- C (205) | 3/4 7/8 15/16 1 | 1.94 49.3 | 3.56 90.3 | 3/16 4.8 | 1.87 47.5 | 1.72 43.6 | 2.80 71.0 | 3.44 87.3 | 4.63 117.5 | 5.50 139.7 | 1.50 38.1 | .75 19.1 | 7/16 3/8 | 1.4 |
| GA1UFO- F (208) | 1-7/16 1-1/2 1-9/16 1-5/8 | 2.75 69.9 | 5.22 132.5 | 3/16 4.8 | 2.31 58.8 | 2.31 58.7 | 3.63 92.1 | 5.00 127.0 | 6.13 155.6 | 7.25 184.2 | 1.94 49.2 | .97 24.6 | 1/2 1/2 | 2.7 |
| GA1UHO- H (210) | 1-11/16 1-3/4 1-13/16 1-7/8 1-15/16 2 50mm | 3.25 82.6 | 6.02 152.9 | 1/4 6.4 | 2.56 65.0 | 2.44 61.9 | 3.75 95.3 | 5.88 149.2 | 6.75 171.5 | 8.13 206.4 | 2.25 57.2 | 1.13 28.6 | 1/2 5/8 | 3.9 |

2-bolt bearings should be purchased separately.