



## Contents

MALT HOUSE GERMINATION TANK MIXING AUGERS .....	12
DISCHARGE CURVE CONVEYOR .....	12
BOTTLE TUB DRIVE MECHANISM .....	13
METAL DETECTORS .....	13
CRYOVAC SHRINK TUNNEL .....	14
GENERAL PLASTIC BELT CONVEYOR .....	14
RAMSEY SCALE .....	15



## MALT HOUSE GERMINATION TANK MIXING AUGERS



QF4GH9-2

### Malt mixer

	Original Bearing	EDT Bearing
Bearing	2" 4-bolt flange ball bearing and 2" Type E 2-15/16" 4-bolt flange bearing	<b>QF4GH9-2, All-Round® Supreme bearing in polymer housing</b>
Failure	Grain products abrade seals and contaminates grease, washdown corrodes metal housings and rolling element bearings	<b>Insert will wear out after approximately 18 months and will need replacement, polymer housing can be reused.</b>
Length of Service	8 months	<b>18+ months</b>
Maintenance Required	Weekly re-lubrication, frequent bearing replacements	<b>No re-lubrication, no maintenance beyond installation required</b>
Features & Benefits	Low initial cost	<b>Lower cost of ownership: reduced maintenance, no lubrication, predictable and reliable operation</b>



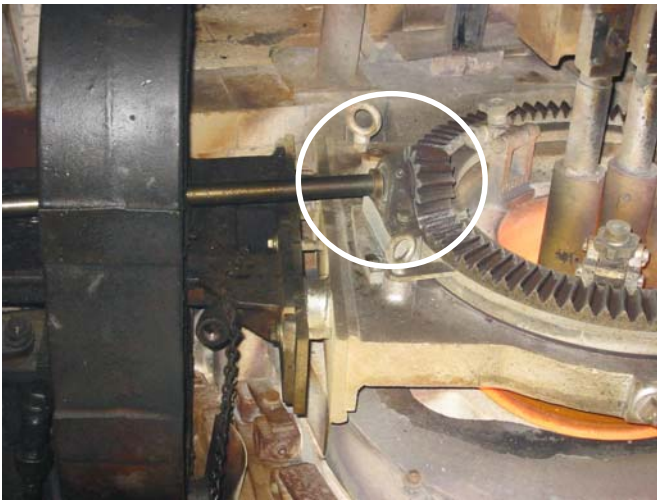
## DISCHARGE CURVE CONVEYOR



ZY9GE8-1-7/6

### Modular belt drive and idler bearings

	Original Bearing	EDT Bearing
Bearing	Standard steel insert bearing in cast iron housing	<b>ZY9GE8-1-7/16, stainless ball bearing in polymer housing</b>
Failure	Cast iron housing and insert bearing do not hold up to frequent washdown	<b>SS Bearing insert resists corrosion. Polymer housing withstands washdown environment</b>
Length of Service	1-1/2 months	<b>12 months</b>
Maintenance Required	Frequent re-lubrication 2-3 times/week. Frequent changeouts because of corrosion	<b>Occasional re-lubrication</b>
Features & Benefits	Low initial cost	<b>Longer, more reliable life Reduced maintenance costs Lower cost of ownership</b>



# BOTTLE TUB DRIVE MECHANISM



MYIUC9-1

## Geared drive support

	Original Bearing	EDT Bearing
Bearing	1" LT750 Solidlube®.	MYIUC9-1, All-Round® insert with extended-length locking sleeve for shaft expansion can be installed into existing metal housing.
Failure	Bearing would eat into the shaft causing production to have to recalibrate	Insert will wear out eventually but locking sleeve will prevent collateral shaft damage.
Length of Service	5 months	15 months
Maintenance Required	Recalibration of bottle formers and they must change shaft every 5 months	No maintenance required after installation
Features & Benefits	Low initial cost	Lower cost of ownership



1 Year  
**GUARANTEED**  
Application

# METAL DETECTORS

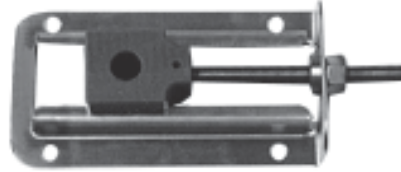
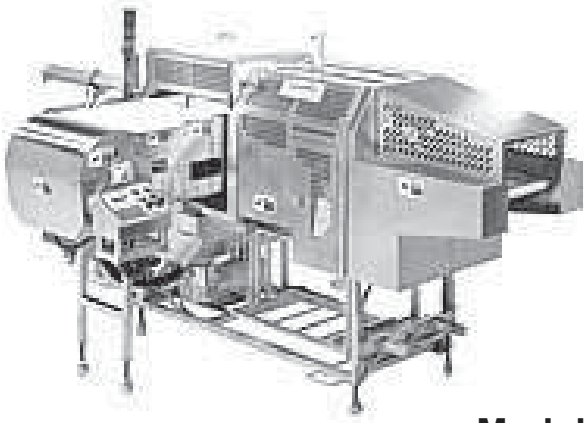
(Safeline, Cintex, Loma, Goering Kerr)



## Modular Plastic Belt Carry-through Conveyor

	Original Bearing	EDT Bearing
Bearing	Nickel plated housing with carbon steel ball bearing	Poly-Round® Solution® polymer (or stainless) housing with solid polymer insert and locking sleeve
Failure	Caustic wash down rusts cast iron housing and carbon steel insert very quickly	Housings and bearings are not affected by caustic wash down - no rust, no grease, non-conductive
Length of Service	3 months	12+ months (guaranteed application)
Maintenance Required	Regular greasing and frequent bearing replacement due to rust and potential product contamination.	Requires no interim maintenance beyond installation
Features & Benefits	Low initial cost.	<ul style="list-style-type: none"> <li>• Longer life reduces maintenance cycles</li> <li>• Lower <i>total</i> cost of ownership</li> <li>• Reliable operation with zero maintenance</li> <li>• Higher level of sanitation</li> </ul>

# CRYOVAC SHRINK TUNNEL



## Modular Plastic Belt conveyor

	Original Bearing	EDT Bearing
Bearing	Bronzoil® bearing in cast metal housing	<b>NA4GC-015-1</b> - solid polymer self aligning bearing in polymer housing; <b>NATUN-1</b> - solid polymer block bearing; <b>EDTU-1</b> - stainless take-up frame assembled with polymer block bearing, NATUN-1
Failure	Contamination from lubrication may warrant premature changeout; Bronzoil® is not food-contact approved; metal housing may rust.	<b>Bore elongation over time</b>
Length of Service	3 to 8 months	<b>8 to 14 months with no product contamination</b>
Maintenance Required	Requires regular greasing because of washdown & heat. Housing rusts from washdown.	<b>Only maintenance required is periodic inspection of polymer bearing to predict longevity and change out.</b>
Features & Benefits	Low initial cost	<ul style="list-style-type: none"> <li>• Non contamination</li> <li>• Longer life, predictable change out</li> <li>• Zero maintenance, no greasing</li> <li>• Lower total cost of ownership</li> </ul>



## GENERAL PLASTIC BELT CONVEYOR

1 Year  
**GUARANTEED**  
Application

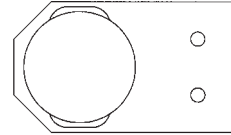
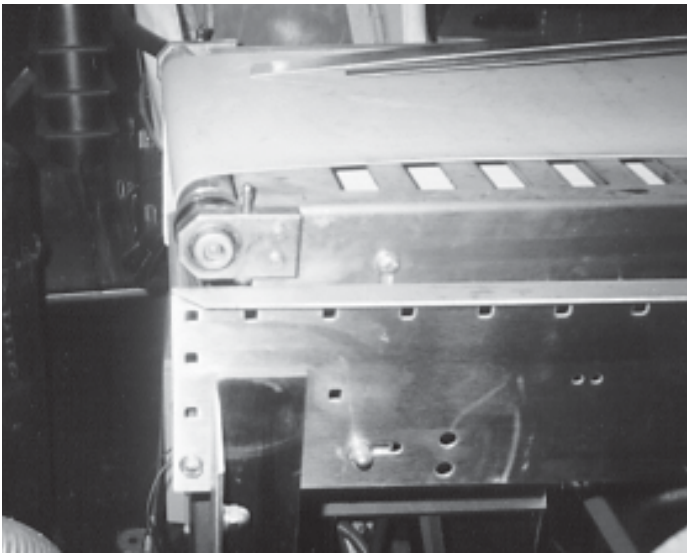


NA1GC7-1

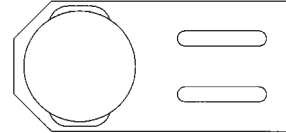
## Modular Plastic Belt Conveyor

	Original Bearing	EDT Bearing
Bearing	Any style cast iron, nickel plated or composite housing with a ball bearing	<b>NA Poly-Round® Solution®</b> solid polymer bearing insert with locking sleeve in polymer (or stainless) housing
Failure	Caustic wash down rusts cast iron housing and carbon steel insert very quickly, frequent relubrication,	<b>Housings and bearings require NO GREASE, are not affected by caustic wash down, are non-contaminating</b>
Length of Service	1 to 2 months	<b>12+ months (guaranteed application)</b>
Maintenance Required	Regular greasing and constant bearing replacement due to rust; potential product contamination.	<b>Requires no interim maintenance after initial installation</b>
Features & Benefits	Low initial cost.	<ul style="list-style-type: none"> <li>• Longer life reduces maintenance cycles</li> <li>• Lower <i>total</i> cost of ownership</li> <li>• Reliable operation with zero maintenance</li> <li>• Higher level of sanitation</li> </ul>

# RAMSEY SCALE



**EDT-0108**



**EDT-0109**

## Flat belt conveyor

	Original Bearing	EDT Bearing
Bearing	Special OEM plastic housing with steel ball bearing	<b>EDT-0108 and EDT-0109: custom stainless housings (option to include stainless ball bearing insert)</b>
Failure	Easy to break housing. OEM housing swells with water, then no longer retains bearing.	<b>Stainless steel housing will not break, not affected by water, washdown or chemicals.</b>
Length of Service	3 to 6 months	<b>1 to 3+ years</b>
Maintenance Required	Regular greasing; rust and potential product contamination; housing life is unpredictable.	<b>Ball bearing requires routine greasing</b>
Features & Benefits	High cost, limited availability, because only source of replacement part is OEM who only offers plastic housing.	<b>Stainless housing is strong and can be 1 time purchase No catastrophic failure</b>

