

1 Year
GUARANTEED
Application

NOTHUM PILOT LINE BATTERER INFEEED BATTERER PADDLE WHEEL DRIVE BEARING



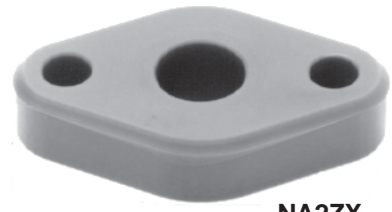
NA2GA7-5/8

Wire belt conveyor

	Original Bearing	EDT Bearing
Bearing	Cast Iron housings with carbon steel bearings	NA2GA7-5/8 and NA2GE7-1-1/4, NA Poly-Round® Solution® polymer inserts with stainless locking sleeves in polymer housings (EDT catalog section J shows these in all styles and sizes)
Failure	Bearing will fail due to corrosion and over or under-greasing and require regular maintenance	Bore elongates over time, but insert can be replaced and housing and sleeve reused.
Length of Service	2-4 months (in washdown)	12+ months in washdown (guaranteed application)
Maintenance Required	Regular greasing and change-outs	Requires no interim maintenance after initial installation.
Features & Benefits	Low initial cost	Lower maintenance, reduced maintenance cycles, longer life, lower ownership costs.



FORMAX PATTY FORMER STEIN MODEL XL READERS



NA2ZX-__

Wire belt transfer conveyor

	Original Bearing	EDT Bearing
Bearing	OEM component is molded plastic	NA2ZX-3/8, 1/2, or 5/8 machined polymer block
Failure	Original plastic does not hold up to load and abrasion	Breading slowly abrades the bearing ID
Length of Service	3 to 6 weeks	3 to 8 months
Maintenance Required	Frequent changeout	No grease or interim maintenance after installation.
Features & Benefits	Original equipment component.	NA polymer withstands higher load, abrasion and temperatures than molded plastic material.