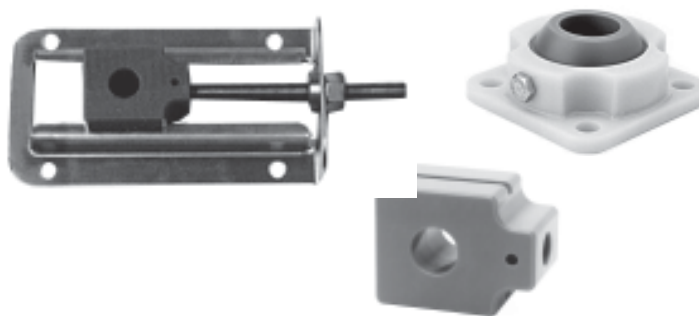
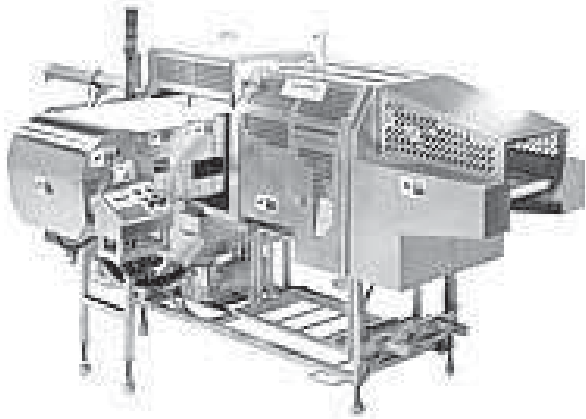


CRYOVAC SHRINK TUNNEL



Modular Plastic Belt conveyor

	Original Bearing	EDT Bearing
Bearing	Bronzoil® bearing in cast metal housing	NA4GC-015-1 - solid polymer self aligning bearing in polymer housing; NATUN-1 - solid polymer block bearing; EDTU-1 - stainless take-up frame assembled with polymer block bearing, NATUN-1
Failure	Contamination from lubrication may warrant premature changeout; Bronzoil® is not food-contact approved; metal housing may rust.	Bore elongation over time
Length of Service	3 to 8 months	8 to 14 months with no product contamination
Maintenance Required	Requires regular greasing because of washdown & heat. Housing rusts from washdown.	Only maintenance required is periodic inspection of polymer bearing to predict longevity and change out.
Features & Benefits	Low initial cost	<ul style="list-style-type: none"> • Non contamination • Longer life, predictable change out • Zero maintenance, no greasing • Lower total cost of ownership



GENERAL PLASTIC BELT CONVEYOR



NA1GC7-1

Modular Plastic Belt Conveyor

	Original Bearing	EDT Bearing
Bearing	Any style cast iron, nickel plated or composite housing with a ball bearing	NA Poly-Round® Solution® solid polymer bearing insert with locking sleeve in polymer (or stainless) housing
Failure	Caustic wash down rusts cast iron housing and carbon steel insert very quickly, frequent relubrication,	Housings and bearings require NO GREASE, are not affected by caustic wash down, are non-contaminating
Length of Service	1 to 2 months	12+ months (guaranteed application)
Maintenance Required	Regular greasing and constant bearing replacement due to rust; potential product contamination.	Requires no interim maintenance after initial installation
Features & Benefits	Low initial cost.	<ul style="list-style-type: none"> • Longer life reduces maintenance cycles • Lower <i>total</i> cost of ownership • Reliable operation with zero maintenance • Higher level of sanitation