



SOLUTION® POLYMER HOUSINGS w/ POLY-ROUND INSERTS



Solid polymer self-aligning bearing inserts in polymer housing with or without locking sleeves

- Easy to clean; sanitary unit
- No lubrication
- Corrosion resistant
- Non-contaminating
- Non-magnetic
- Available for all inch & metric sizes



EDT IS A MEMBER OF
"THE PLANE BEARINGS STANDARDS ASSOCIATION"
P.B.S.A.: DEFINING THE PLANE BEARING FOR INDUSTRY WORLDWIDE

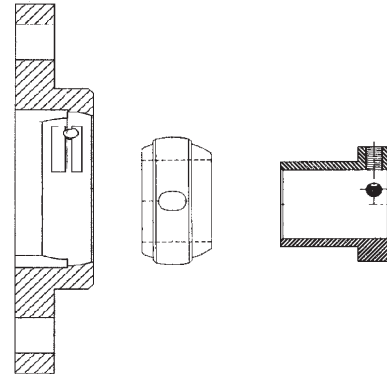
EDT CORP
PH 360-574-7294
FAX 360-574-3834
www.edtcorp.com

1006-J NE 146th Street
Vancouver, WA 98685
email - edtsales@edtcorp.com
AMBER 0502

POLY-ROUND SOLUTION®

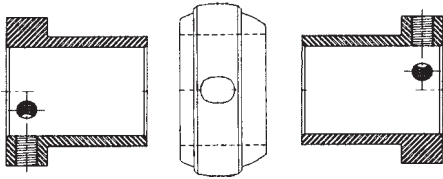
FEATURES AND BENEFITS:

- Flat mounting surfaces.
- Sanitary and easy to clean.
- Polymer housings can be a one time purchase.
- Resistant to washdowns, many chemicals, and corrosion.
- Non-symmetrical for greater installation versatility.



IDEAL IN LOCATIONS THAT ARE:

- low or moderate speed and low load
- light duty plastic belt or roller conveyors
- submerged (depending on bearing material selected)
- highly corrosive (depending on bearing material selected)
- high impact (depending on bearing material selected)
- sanitary



NEVER
use anti-seize
with greaseless
plane bearings

MATERIAL SELECTION CHART

Poly-Round Bearing Materials	PV (1) Limit	Maximum Speed V (SFM)	Maximum Loading P (PSI)	Continuous Operating Temp.	Performance in Moisture		ΔT Dimensional Stability w/Temp Change	Chemical Resistance	Abrasion Resistance	Impact Resistance	USDA/FDA Contact Approval
					Washdown	Submerged					
PA UHMW white	1,000	50	800	150°F	Excellent	Excellent	Poor	Excellent	Abrasion applications are very unpredictable. Each application must be tested for abrasion resistance (2).	Excellent	Direct
NA grey	6,000	350	2,000	220°F	Excellent	Fair	Fair	Fair		Excellent	Incidental
FA white	6,000	350	1,000	550°F	Excellent	Excellent	Poor	Excellent		Fair	Direct
QF black	60,000	400	6,000	500°F	Excellent	Excellent	Excellent	Excellent		Fair	Incidental

(1) PV limits are shown for unlubricated radial bearing applications. Low temperature / submerged installation may permit PV limits up to 2x higher.

(2) Proper use of exclusionary seals can greatly extend bearing life. Forsheda V-rings are very effective with any of EDT's plane bearings.

For details on calculating PV
See page F-3 or H-3

Greaseless plane bearings are NOT recommended in these applications:

- high tension applications (V-belt drives, flat belt conveyors, urethane belts)
- high speed devices (fans, pumps, table top conveyors)
- overhung loads (shaft mounted gear reducers)