



SOLUTION[®] POLYMER HOUSINGS w/ POLY-ROUND INSERTS



Solid polymer self-aligning bearing inserts in polymer housing with or without locking sleeves

- Easy to clean; sanitary unit
- No lubrication
- Corrosion resistant
- Non-contaminating
- Non-magnetic
- Available for all inch & metric sizes

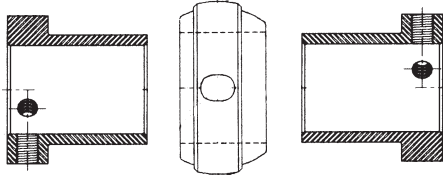
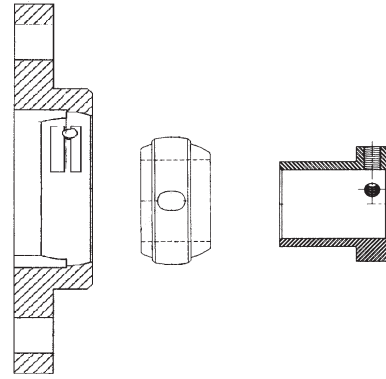


edtcorp.com edtsales@edtcorp.com	EDT CORP 1006-J NE 146th Street Vancouver, WA 98685	PHONE 360-574-7294 FAX 360-574-3834
-------------------------------------	--	--

POLY-ROUND SOLUTION®

FEATURES AND BENEFITS:

- Flat mounting surfaces.
- Sanitary and easy to clean.
- Polymer housings can be a one time purchase.
- Resistant to washdowns, many chemicals, and corrosion.
- Non-symmetrical for greater installation versatility.



NEVER
use anti-seize
with greaseless
plane bearings

IDEAL IN LOCATIONS THAT ARE:

- Low or moderate speed and low load
- Light duty plastic belt or roller conveyors
- Submerged (depending on bearing material selected)
- Highly corrosive (depending on bearing material selected)
- High impact (depending on bearing material selected)
- Sanitary

MATERIAL SELECTION CHART

Poly-Round Bearing Materials	PV (1) Limit	Maximum Speed V (SFM)	Maximum Loading P (PSI)	Continuous Operating Temp.	Performance in Moisture		ΔT Dimensional Stability w/Temp Change	Chemical Resistance	Abrasion Resistance	Impact Resistance	USDA/FDA Contact Approval
					Washdown	Submerged					
PA UHMW white	1,000	50	800	150°F	Excellent	Excellent	Poor	Excellent	Abrasion applications are very unpredictable. Each application must be tested for abrasion resistance (2).	Excellent	Direct
NA grey	6,000	350	2,000	220°F	Excellent	Good	Fair	Fair		Excellent	Incidental
FA white	6,000	350	1,000	550°F	Excellent	Excellent	Poor	Excellent		Fair	Direct
QF black	60,000	400	6,000	500°F	Excellent	Excellent	Excellent	Excellent		Fair	Incidental

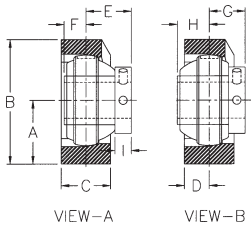
(1) PV limits are shown for unlubricated radial bearing applications. Low temperature / submerged installation may permit PV limits up to 2x higher.

(2) Proper use of exclusionary seals can greatly extend bearing life. Forsheda V-rings are very effective with any of EDT's plane bearings.

For details on calculating PV
See page F-3 or H-3

Greaseless plane bearings are NOT recommended in these applications:

- high tension applications (V-belt drives, flat belt conveyors, urethane belts)
- high speed devices (fans, pumps, table top conveyors)
- overhung loads (shaft mounted gear reducers)



SOLUTION® TAPPED BASE POLYMER HOUSING w/ POLY-ROUND INSERT

Mounting pattern interchanges with:
 Dodge TB-SC
 MB TBC-25
 Sealmaster TB
 Hub City TPB50
 MRC CTB
 AMI TBL
 Linkbelt PT3



7- specifies use with a locking sleeve 5- specifies use without a locking sleeve

MOUNTED SET P/N GROUP (RING)	Shaft Diameter		A	B	C	D	E	F	G	H	I	Wt. in lbs.	Replacement Polymer Bearing
	mm	in.	in. mm	in. mm	in. mm	in. mm	in. mm	in. mm	in. mm	in. mm	in. mm		
__9GA7- __9GA5- A (203)		1/2	1-5/16	2-1/2	1-5/16	21/32	63/64	3/8	25/32	9/16	3/8	.4	__IUAO-A
	12	9/16	33.3	63.5	33.3	16.7	25.0	9.5	19.8	14.3	9.5		
	15 17	5/8 11/16											
__9GB7- __9GB5- B (204)		1/2	1-5/16	2-5/8	1-7/16	23/32	63/64	1/2	59/64	9/16	3/8	.6	__IUBO-B
	12	5/8	33.3	66.7	36.5	18.3	25.0	12.7	23.4	14.3	9.5		
	15 17 20	11/16 3/4 13/16											
__9GC7- __9GC5- C (205)		13/16	1-7/16	2-15/16	1-7/16	23/32	1-3/64	1/2	59/64	5/8	3/8	.7	__IUCO-C
	25	7/8	36.5	74.6	36.5	18.3	26.6	12.7	23.4	15.9	9.5		
		15/16 1											
__9GD7- __9GD5- D (206)		1	1-11/16	3-3/8	1-5/8	13/16	1-19/64	35/64	1-5/64	3/4	31/64	1.0	__IUDO-D
	30	1-1/8	42.9	85.7	41.3	20.6	32.9	13.9	27.4	19.1	11.9		
		1-3/16 1-1/4											
__9GE7- __9GE5- E (207)		1-3/16	1-7/8	3-7/8	1-3/4	7/8	1-31/64	9/16	1-7/64	15/16	1/2	1.2	__IUEO-E
	35	1-1/4	47.6	98.4	44.5	22.2	37.7	14.3	28.2	23.8	12.7		
		1-5/16 1-3/8 1-7/16											
__9GF7- __9GF5- F (208)		1-7/16	1-15/16	4-1/8	1-7/8	15/16	1-37/64	21/32	1-17/64	31/32	9/16	1.7	__IUFO-F
	40	1-1/2	49.2	104.8	47.6	23.8	40.1	16.7	32.1	24.6	14.3		
		1-9/16 1-5/8											
__9GG7- __9GG5- G (209)		1-1/2	2-1/8	4-3/8	2	1	1-41/64	21/32	1-17/64	1-1/32	9/16	2.1	__IUGO-G
	45	1-5/8	54.0	111.1	50.8	25.4	41.7	16.7	32.1	26.2	14.3		
		1-11/16 1-3/4											
__9GH7- __9GH5- H (210)		1-11/16	2-1/4	4-3/4	2-1/8	1-1/16	1-41/64	21/32	1-17/64	1-1/32	9/16	2.3	__IUHO-H
	50	1-3/4	57.2	120.7	54.0	27.0	41.7	16.7	32.1	26.2	14.3		
		1-13/16 1-7/8 1-15/16 2											
__9GI7- __9GI5- I (211)		1-15/16	2-1/4	4-7/8	2-5/16	1-5/32	1-51/64	11/16	1-19/64	1-3/16	9/16		__IUIO-I
	55	2	57.2	123.8	58.7	29.4	45.6	17.5	32.9	30.2	14.3		
		2-1/16 2-1/8 2-3/16 2-1/4											
__9GJ7- __9GJ5- J (212)		2-3/16	2-3/4	5-3/4	2-7/16	1-7/32	2-1/16	23/32	1-21/64	1-13/32	9/16		__IUJO-J
	60	2-1/4	69.9	146.1	61.9	31.0	51.2	18.3	33.7	35.7	14.3		
		2-5/16 2-3/8 2-7/16											
__9GK7- __9GK5- K (214)		2-7/16	3	6-3/8	2-1/2	1-1/4	2-7/64	13/16	1-39/64	1-5/16	3/4		__IUKO-K
	70	2-1/2	76.2	161.9	63.5	31.8	53.6	20.6	40.9	33.3	19.1		
		2-5/8 2-11/16 2-3/4											
__9GL7- __9GL5- L (215)		2-11/16	3-1/2	7	2-7/8	1-7/16	2-3/64	7/8	1-43/64	1-1/4	3/4		__IULO-L
	75	2-3/4	88.9	177.8	73.0	36.5	52.0	22.2	42.5	31.8	19.1		
		2-13/16 2-7/8 2-15/16 3											

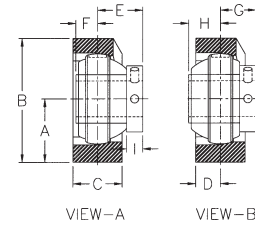
For housing dimensions.....see page D-3 (GREY)
 For solid bearing inserts.....see page H-4&5 (WHITE)

SOLUTION® PILLOW BLOCK POLYMER HOUSING w/ POLY-ROUND INSERT

low backing height

With few exceptions, EDT series 10G mounting pattern interchanges with:

Dodge	P2B-SCB, - SXB
Fafnir	RAK, VAK
Sealmaster	NPL
MB	CL-25
Hub City	PB220, PB250



7- specifies use with a locking sleeve

5- specifies use without a locking sleeve

MOUNTED SET P/N GROUP (RING)	Shaft Diameter		A	B	C	D	E	F	G	H	I	Wt. in lbs.	Replacement Polymer Bearing
	mm	in.	in. mm	in. mm	in. mm	in. mm	in. mm	in. mm	in. mm	in. mm	in. mm		
--10GA7- --10GA5- A (203)	12 15 17	1/2 9/16 5/8 11/16	--	--	--	--	--	--	--	--	--		--_IUAO-A
--10GB7- --10GB5- B (204)	12 15 17 20	1/2 9/16 5/8 11/16 3/4 13/16	1-1/4 31.8	2-5/8 66.7	1-3/8 34.9	11/16 17.5	63/64 25.0	1/2 12.7	59/64 23.4	9/16 14.3	3/8 9.5	.6	--_IUBO-B
--10GC7- --10GC5- C (205)	25	13/16 7/8 15/16 1	1-5/16 33.3	2-13/16 71.4	1-1/2 38.1	3/4 19.1	1-3/64 26.6	1/2 12.7	59/64 23.4	5/8 15.9	3/8 9.5	.8	--_IUCO-C
--10GD7- --10GD5- D (206)	30	1 1-1/16 1-1/8 1-3/16 1-1/4	1-9/16 39.7	3-5/16 84.1	1-3/4 44.5	7/8 22.2	1-19/64 32.9	35/64 13.9	1-5/64 27.4	3/4 19.1	31/64 11.9	1.1	--_IUDO-D
--10GE7- --10GE5- E (207)	35	1-3/16 1-1/4 1-5/16 1-3/8 1-7/16	1-13/16 46.0	3-3/4 95.2	1-3/4 44.5	7/8 22.2	1-31/64 37.7	9/16 14.3	1-7/64 28.2	15/16 23.8	1/2 12.7	1.5	--_IUEO-E
--10GF7- --10GF5- F (208)	40	1-7/16 1-1/2 1-9/16 1-5/8	1-15/16 49.2	4-1/16 103.2	1-15/16 49.2	31/32 24.6	1-37/64 40.1	21/32 16.7	1-17/64 32.1	31/32 24.6	9/16 14.3	1.8	--_IUFO-F
--10GG7- --10GG5- G (209)	45	1-1/2 1-5/8 1-11/16 1-3/4	2-1/16 52.4	4-1/4 108.0	2 50.8	1 25.4	1-41/64 41.7	21/32 16.7	1-17/64 32.1	1-1/32 26.2	9/16 14.3	2.1	--_IUGO-G
--10GH7- --10GH5- H (210)	50	1-11/16 1-3/4 1-13/16 1-7/8 1-15/16 2	2-3/16 55.6	4-9/16 115.9	2-1/4 57.2	1-1/8 28.6	1-41/64 41.7	21/32 16.7	1-17/64 32.1	1-1/32 26.2	9/16 14.3	2.6	--_IUHO-H
--10GI7- --10GI5- I (211)	55	1-15/16 2 2-1/16 2-1/8 2-3/16 2-1/4	2-7/16 61.9	5-1/16 128.6	2-3/8 60.3	1-3/16 30.2	1-51/64 45.6	11/16 17.5	1-19/64 32.9	1-3/16 30.2	9/16 14.3	3.3	--_IUIO-I
--10GJ7- --10GJ5- J (212)	60	2-3/16 2-1/4 2-5/16 2-3/8 2-7/16	2-11/16 68.3	5-9/16 141.3	2-1/2 63.5	1-1/4 31.8	2-1/16 51.2	23/32 18.3	1-21/64 33.7	1-13/32 35.7	9/16 14.3	3.6	--_IUJO-J
--10GK7- --10GK5- K (214)	70	2-7/16 2-1/2 2-5/8 2-11/16 2-3/4	3-1/8 79.4	6-5/16 160.3	2-3/4 69.9	1-3/8 34.9	2-7/64 53.6	13/16 20.6	1-39/64 40.9	1-5/16 33.3	3/4 19.1		--_IUKO-K
--10GL7- --10GL5- L (215)	75	2-11/16 2-3/4 2-13/16 2-7/8 2-15/16 3	3-1/4 82.5	6-9/16 166.7	2-7/8 73.0	1-7/16 36.5	2-3/64 52.0	7/8 22.2	1-43/64 42.5	1-1/4 31.8	3/4 19.1	6.5	--_IULO-L

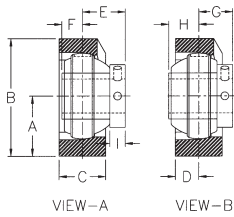
For housing dimensions.....see page D-4 (GREY)
For solid bearing inserts.....see page H-4&5 (WHITE)

SOLUTION® PILLOW BLOCK POLYMER HOUSING w/ POLY-ROUND INSERT

standard backing height

With few exceptions, EDT series 1G mounting pattern interchanges with:

Dodge	P2B-SC, SCM
Fafnir	RAS, RASC
MB	C-25, C-35
Sealmaster	NP
MRC	CPB
Hub City	PB221, PB251
AMI	PPI
Linkbelt	P3-, KP-, KPL-S200



7- specifies use with a locking sleeve

5- specifies use without a locking sleeve

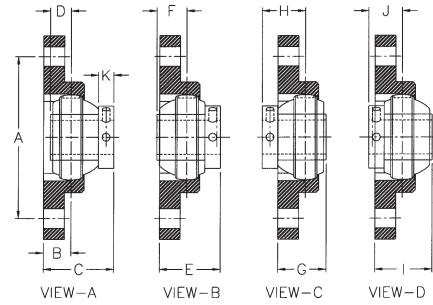
MOUNTED SET P/N	Shaft Diameter		A	B	C	D	E	F	G	H	I	Wt. in lbs.	Replacement Polymer Bearing
	GROUP (RING)	mm	in.	in.	in.	in.	in.	in.	in.	in.	in.		
--1GA7- --1GA5- A (203)	12 15 17	1/2 9/16 5/8 11/16	1-1/16 27.0	2-1/4 57.2	1-1/4 31.8	5/8 15.9	63/64 25.0	3/8 9.5	25/32 19.8	9/16 14.3	3/8 9.5	.4	--IUAO-A
--1GB7- --1GB5- B (204)	12 15 17 20	1/2 9/16 5/8 11/16 3/4 13/16	1-5/16 33.3	2-11/16 68.3	1-3/8 34.9	11/16 17.5	63/64 25.0	1/2 12.7	59/64 23.4	9/16 14.3	3/8 9.5	.6	--IUBO-B
--1GC7- --1GC5- C (205)	25	13/16 7/8 15/16 1	1-7/16 36.5	2-15/16 74.6	1-1/2 38.1	3/4 19.1	1-3/64 26.6	1/2 12.7	59/64 23.4	5/8 15.9	3/8 9.5	.8	--IUCO-C
--1GD7- --1GD5- D (206)	30	1 1-1/16 1-1/8 1-3/16 1-1/4	1-11/16 42.9	3-3/8 85.7	1-3/4 44.5	7/8 22.2	1-19/64 32.9	35/64 13.9	1-5/64 27.4	3/4 19.1	31/64 11.9	1.1	--IUDO-D
--1GE7- --1GE5- E (207)	35	1-3/16 1-1/4 1-5/16 1-3/8 1-7/16	1-7/8 47.6	3-7/8 98.4	1-3/4 44.5	7/8 22.2	1-31/64 37.7	9/16 14.3	1-7/64 28.2	15/16 23.8	1/2 12.7	1.5	--IUEO-E
--1GF7- --1GF5- F (208)	40	1-7/16 1-1/2 1-9/16 1-5/8	2-1/8 54.0	4-5/16 109.5	1-15/16 49.2	31/32 24.6	1-37/64 40.1	21/32 16.7	1-17/64 32.1	31/32 24.6	9/16 14.3	1.9	--IUFO-F
--1GG7- --1GG5- G (209)	45	1-1/2 1-5/8 1-11/16 1-3/4	2-1/8 54.0	4-3/8 111.1	2 50.8	1 25.4	1-41/64 41.7	21/32 16.7	1-17/64 32.1	1-1/32 26.2	9/16 14.3	2.1	--IUGO-G
--1GH7- --1GH5- H (210)	50	1-11/16 1-3/4 1-13/16 1-7/8 1-15/16 2	2-1/4 57.2	4-5/8 117.5	2-1/4 57.2	1-1/8 28.6	1-41/64 41.7	21/32 16.7	1-17/64 32.1	1-1/32 26.2	9/16 14.3	2.7	--IUHO-H
--1GI7- --1GI5- I (211)	55	1-15/16 2 2-1/16 2-1/8 2-3/16 2-1/4	2-1/2 63.5	5-1/8 130.2	2-3/8 60.3	1-3/16 30.2	1-51/64 45.6	11/16 17.5	1-19/64 32.9	1-3/16 30.2	9/16 14.3	3.3	--IUIO-I
--1GJ7- --1GJ5- J (212)	60	2-3/16 2-1/4 2-5/16 2-3/8 2-7/16	2-3/4 69.9	5-1/2 139.7	2-1/2 63.5	1-1/4 31.8	2-1/16 51.2	23/32 18.3	1-21/64 33.7	1-13/32 35.7	9/16 14.3	3.8	--IUJO-J
--1GK7- --1GK5- K (214)	70	2-7/16 2-1/2 2-5/8 2-11/16 2-3/4	3 76.2	6-1/4 158.7	2-3/4 69.9	1-3/8 34.9	2-7/64 53.6	13/16 20.6	1-39/64 40.9	1-5/16 33.3	3/4 19.1	6.4	--IUKO-K
--1GL7- --1GL5- L (215)	75	2-11/16 2-3/4 2-13/16 2-7/8 2-15/16 3	3-1/2 88.9	6-7/8 174.6	2-7/8 73.0	1-7/16 36.5	2-3/64 52.0	7/8 22.2	1-43/64 42.5	1-1/4 31.8	3/4 19.1	6.6	--IULO-L

For housing dimensions.....see page D-5 (GREY)
For solid bearing inserts.....see page H-4&5 (WHITE)

SOLUTION® SMALL TWO BOLT POLYMER HOUSING w/ POLY-ROUND INSERT



Mounting pattern interchanges with:
 Dodge LFT-SC
 Fafnir RAT
 MB FBS2-25
 Hub City FB160



7- specifies use with a locking sleeve 5- specifies use without a locking sleeve

MOUNTED SET P/N GROUP (RING)	Shaft Diameter		A	B	C	D	E	F	G	H	I	J	K	Wt. in lbs.	Replacement Polymer Bearing
	mm	in.	in. mm	in. mm	in. mm	in. mm	in. mm	in. mm	in. mm	in. mm	in. mm	in. mm	in. mm		
--6GA7- --6GA5- A (203)	12 15 17	1/2	2-1/2	27/64	1-25/64	3/8	1-3/32	21/32	51/64	63/64	1-3/32	11/16	3/8	.26	--_IUAO-A
		9/16	63.5	10.7	35.5	9.5	28.2	16.8	20.2	25.0	28.2	17.4	9.5		
		5/8													
		11/16													
--6GB7- --6GB5- B (204)	12 15 17 20	1/2	2-13/16	1/2	1-31/64	1/2	1-5/16	21/32	1	63/64	1-5/32	13/16	3/8	.38	--_IUBO-B
		9/16	71.4	12.7	37.5	12.7	33.3	16.8	25.4	25.0	29.5	20.6	9.5		
		5/8													
		11/16													
--6GC7- --6GC5- C (205)	25	13/16	3	1/2	1-17/32	1/2	1-5/16	47/64	1	1-1/32	1-7/32	13/16	3/8	.53	--_IUCO-C
		7/8	76.2	12.7	39.1	12.7	33.3	18.4	25.4	26.4	31.0	20.6	9.5		
		15/16													
		1													
--6GD7- --6GD5- D (206)	30	1	3-9/16	9/16	1-27/32	35/64	1-17/32	55/64	1-7/64	1-9/32	1-27/64	31/32	31/64	.75	--_IUDO-D
		1-1/16	90.5	14.3	46.9	13.9	38.8	21.9	28.2	32.6	36.2	24.5	11.9		
		1-1/8													
		1-3/16													
--6GE7- --6GE5- E (207)	35	1-3/16	3-15/16	9/16	2-1/32	9/16	1-9/16	1-1/32	1-1/8	1-15/32	1-19/32	1	1/2	.96	--_IUEO-E
		1-1/4	100.0	14.3	51.6	14.3	39.7	26.3	28.7	37.3	40.6	25.4	12.7		
		1-5/16													
		1-3/8													

Round bolt holes are standard.
 Square bolt holes are available - if required, please call for price and lead time.

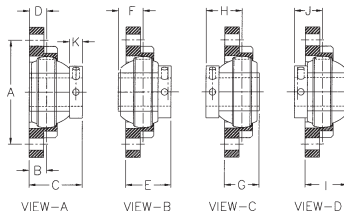
For housing dimensions.....see page D-6 (GREY)
 For solid bearing inserts.....see page H-4&5 (WHITE)

SOLUTION® TWO BOLT POLYMER HOUSING

w/ POLY-ROUND INSERT

Mounting pattern interchanges with:

Dodge	F2B-SC, -VSC, -SCM
Fafnir	RCJT
Sealmaster	SFT, HFT, HT, HFC, HEC
MRC	C2F
MB	FC2-25, FC2-35
Hub City	FB230, FB260
AMI	NFL
Linkbelt	FX3-, KFX- KLFX-S200



7- specifies use with a locking sleeve 5- specifies use without a locking sleeve

MOUNTED SET P/N GROUP (RING)	Shaft Diameter		A	B	C	D	E	F	G	H	I	J	K	Wt. in lbs.	Replacement Polymer Bearing
	mm	in.	in. mm	in. mm	in. mm	in. mm	in. mm	in. mm	in. mm	in. mm	in. mm	in. mm	in. mm		
-- 2GA7- -- 2GA5- A (203)	12	1/2	3	37/64	1-9/16	3/8	1-23/64	9/16	61/64	63/64	1-9/64	25/32	3/8	.3	__JUAO-A
	15	9/16	76.2	14.7	39.7	9.5	34.5	14.3	24.2	25.0	29.0	19.8	9.5		
	17	5/8													
-- 2GB7- -- 2GB5- B (204)	12	1/2	3-17/32	19/32	1-37/64	1/2	1-33/64	9/16	1-3/32	63/64	1-5/32	59/64	3/8	.5	__JUBO-B
	15	9/16	89.7	15.1	40.1	12.7	38.5	14.3	27.8	25.0	29.4	23.4	9.5		
	17	5/8													
-- 2GC7- -- 2GC5- C (205)	15	13/16	3-57/64	21/32	1-45/64	1/2	1-37/64	5/8	1-5/32	1-3/64	1-9/32	59/64	3/8	.6	__JUCO-C
	17	7/8	98.8	16.7	43.3	12.7	40.1	15.9	29.4	26.6	32.5	23.4	9.5		
	20	15/16													
-- 2GD7- -- 2GD5- D (206)	12	1	4-19/32	43/64	1-31/32	35/64	1-3/4	3/4	1-7/32	1-19/64	1-7/16	1-5/64	31/64	.9	__JUDO-D
	15	1-1/16	116.7	17.1	35.7	13.9	44.5	19.1	31.0	32.9	36.5	27.4	11.9		
	17	1-1/8													
-- 2GE7- -- 2GE5- E (207)	15	1-3/16	5-1/8	53/64	2-5/16	9/16	1-15/16	15/16	1-25/64	1-31/64	1-49/64	1-7/64	1/2	1.2	__JUEO-E
	17	1-1/4	130.2	21.0	58.7	14.3	49.2	23.8	35.3	37.7	44.8	28.2	12.7		
	35	1-5/16													
-- 2GF7- -- 2GF5- F (208)	12	1-7/16	5-21/32	27/32	2-27/64	21/32	2-7/64	31/32	1-1/2	1-37/64	1-13/16	1-17/64	9/16	1.4	__JUFO-F
	15	1-1/2	143.7	21.4	61.5	16.7	53.6	24.6	38.1	40.1	46.0	32.1	14.3		
	40	1-9/16													
-- 2GG7- -- 2GG5- G (209)	12	1-1/2	5-27/32	27/32	2-31/64	21/32	2-7/64	1-1/32	1-1/2	1-41/64	1-7/8	1-17/64	9/16	1.8	__JUGO-G
	15	1-5/8	148.4	21.4	63.1	16.7	53.6	26.2	38.1	41.7	47.6	32.1	14.3		
	45	1-11/16													
-- 2GH7- -- 2GH5- H (210)	12	1-11/16	6-3/16	27/32	2-31/64	21/32	2-7/64	1-1/32	1-1/2	1-41/64	1-7/8	1-17/64	9/16	2.0	__JUHO-H
	15	1-3/4	157.2	21.4	63.1	16.7	53.6	26.2	38.1	41.7	47.6	32.1	14.3		
	50	1-13/16													
-- 2GI7- -- 2GI5- I (211)	12	1-15/16	7-1/4	31/32	2-49/64	11/16	2-17/64	1-3/16	1-21/32	1-51/64	2-5/32	1-19/64	9/16	2.8	__JIUO-I
	15	2	184.2	24.6	70.2	17.5	57.5	30.2	42.1	45.6	54.8	32.9	14.3		
	55	2-1/16													
-- 2GJ7- -- 2GJ5- J (212)	12	2-3/16	7-61/64	1-7/64	3-1/8	23/32	2-7/16	1-13/32	1-53/64	2-1/16	2-33/64	1-21/64	9/16		__JUJO-J
	15	2-1/4	202.0	28.2	79.4	18.3	61.9	35.7	46.4	51.2	63.9	33.7	14.3		
	60	2-5/16													
-- 2GK7- -- 2GK5- K (214)	12	2-7/16	8-5/16	1-9/32	3-25/64	13/16	2-57/64	1-5/16	2-3/32	2-7/64	2-19/32	1-39/64	3/4		__JUKO-K
	15	2-1/2	211.1	32.5	86.1	20.6	73.4	33.3	53.2	53.6	65.9	40.9	19.1		
	70	2-5/8													
-- 2GL7- -- 2GL5- L (215)	12	2-11/16	8-1/2	1-13/32	3-29/64	7/8	3-5/64	1-1/4	2-9/32	2-3/64	2-21/32	1-43/64	3/4		__JULO-L
	15	2-3/4	215.9	35.7	87.7	22.2	78.2	31.8	57.9	52.0	67.5	42.5	19.1		
	75	2-13/16													

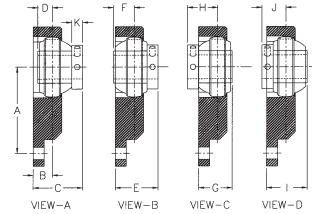
For housing dimensions.....see page D-7 (GREY)
For solid bearing inserts.....see page H-4&5 (WHITE)



SOLUTION® THREE BOLT POLYMER HOUSING w/ POLY-ROUND INSERT

Mounting pattern interchanges with:

Dodge	FB-SC
Sealmaster	FB
MRC	C3F
MB	MFB
Linkbelt	FB3



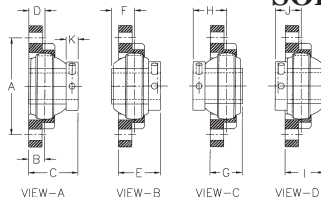
7- specifies use with a locking sleeve

5- specifies use without a locking sleeve

MOUNTED SET P/N	Shaft Diameter		A	B	C	D	E	F	G	H	I	J	K	Wt. in lbs.	Replacement Polymer Bearing
	GROUP (RING)	mm	in.	in.	in.	in.	in.	in.	in.	in.	in.	in.	in.		
-- 3GA7- -- 3GA5- A (203)	12 15 17	1/2 9/16 5/8 11/16	2-3/16 55.5	37/64 14.7	1-9/16 39.7	3/8 9.5	1-23/64 34.5	9/16 14.3	61/64 24.2	63/64 25.0	1-9/64 29.0	25/32 19.8	3/8 9.5	.3	-- IUAO-A
-- 3GB7- -- 3GB5- B (204)	12 15 17 20	1/2 9/16 5/8 11/16 3/4 13/16	2-9/16 65.1	19/32 15.1	1-37/64 40.1	1/2 12.7	1-33/64 38.5	9/16 14.3	1-3/32 27.8	63/64 25.0	1-5/32 29.4	59/64 23.4	3/8 9.5	.5	-- IUBO-B
-- 3GC7- -- 3GC5- C (205)	25	13/16 7/8 15/16 1	2-15/16 74.6	21/32 16.7	1-45/64 43.3	1/2 12.7	1-37/64 40.1	5/8 15.9	1-5/32 29.4	1-3/64 26.6	1-9/32 32.5	59/64 23.4	3/8 9.5	.7	-- IUCO-C
-- 3GD7- -- 3GD5- D (206)	30	1 1-1/16 1-1/8 1-3/16 1-1/4	3-5/16 84.1	43/64 17.1	1-31/32 35.7	35/64 13.9	1-3/4 44.5	3/4 19.1	1-7/32 31.0	1-19/64 32.9	1-7/16 36.5	1-5/64 27.4	31/64 11.9	1.0	-- IUDO-D
-- 3GE7- -- 3GE5- E (207)	35	1-3/16 1-1/4 1-5/16 1-3/8 1-7/16	3-5/8 92.1	53/64 21.0	2-5/16 58.7	9/16 14.3	1-15/16 49.2	15/16 23.8	1-25/64 35.3	1-31/64 37.7	1-49/64 44.8	1-7/64 28.2	1/2 12.7	1.3	-- IUEO-E
-- 3GF7- -- 3GF5- F (208)	40	1-7/16 1-1/2 1-9/16 1-5/8	3-15/16 100.0	27/32 21.4	2-27/64 61.5	21/32 16.7	2-7/64 53.6	31/32 24.6	1-1/2 38.1	1-37/64 40.1	1-13/16 46.0	1-17/64 32.1	9/16 14.3	1.6	-- IUFO-F
-- 3GG7- -- 3GG5- G (209)	45	1-1/2 1-5/8 1-11/16 1-3/4	4-1/4 108.0	27/32 21.4	2-31/64 63.1	21/32 16.7	2-7/64 53.6	1-1/32 26.2	1-1/2 38.1	1-41/64 41.7	1-7/8 47.6	1-17/64 32.1	9/16 14.3		-- IUGO-G
-- 3GH7- -- 3GH5- H (210)	50	1-11/16 1-3/4 1-13/16 1-7/8 1-15/16 2	4-9/16 115.9	27/32 21.4	2-31/64 63.1	21/32 16.7	2-7/64 53.6	1-1/32 26.2	1-1/2 38.1	1-41/64 41.7	1-7/8 47.6	1-17/64 32.1	9/16 14.3		-- IUHO-H
-- 3GI7- -- 3GI5- I (211)	55	1-15/16 2 2-1/16 2-1/8 2-3/16 2-1/4	4-7/8 123.8	31/32 24.6	2-49/64 70.2	11/16 17.5	2-17/64 57.5	1-3/16 30.2	1-21/32 42.1	1-51/64 45.6	2-5/32 54.8	1-19/64 32.9	9/16 14.3	2.9	-- IUIO-I
-- 3GJ7- -- 3GJ5- J (212)	60	2-3/16 2-1/4 2-5/16 2-3/8 2-7/16	5-3/8 136.5	1-7/64 28.2	3-1/8 79.4	23/32 18.3	2-7/16 61.9	1-13/32 35.7	1-53/64 46.4	2-1/16 51.2	2-33/64 63.9	1-21/64 33.7	9/16 14.3	3.8	-- IUJO-J
-- 3GK7- -- 3GK5- K (214)	70	2-7/16 2-1/2 2-5/8 2-11/16 2-3/4	6-1/8 155.6	1-9/32 32.5	3-25/64 86.1	13/16 20.6	2-57/64 73.4	1-5/16 33.3	2-3/32 53.2	2-7/64 53.6	2-19/32 65.9	1-39/64 40.9	3/4 19.1		-- IUKO-K
-- 3GL7- -- 3GL5- L (215)	75	2-11/16 2-3/4 2-13/16 2-7/8 2-15/16 3	6-5/8 168.3	1-13/32 35.7	3-29/64 87.7	7/8 22.2	3-5/64 78.2	1-1/4 31.8	2-9/32 57.9	2-3/64 52.0	2-21/32 67.5	1-43/64 42.5	3/4 19.1		-- IULO-L

For housing dimensions.....see page D-8 (GREY)
For solid bearing inserts.....see page H-4&5 (WHITE)

SOLUTION® FOUR BOLT POLYMER HOUSING w/ POLY-ROUND INSERT



Mounting pattern interchanges with:
 Dodge F4B-SC, -SCTC, -SCM
 Fafnir RCJ
 Sealmaster SF
 MRC C4F
 MB FC4-25, FC4-35
 AMI FPL
 Linkbelt F3, KF, KLF



7- specifies use with a locking sleeve 5- specifies use without a locking sleeve

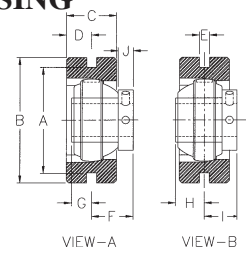
MOUNTED SET P/N GROUP (RING)	Shaft Diameter		A	B	C	D	E	F	G	H	I	J	K	Wt. in lbs.	Replacement Polymer Bearing
	mm	in.	in. mm	in. mm	in. mm	in. mm	in. mm	in. mm	in. mm	in. mm	in. mm	in. mm	in. mm		
--_4GA7- --_4GA5- A (203)	12	1/2	2-1/8	37/64	1-9/16	3/8	1-23/64	9/16	61/64	63/64	1-9/64	25/32	3/8	.4	__IUAO-A
	15	9/16	54.0	14.7	39.7	9.5	34.5	14.3	24.2	25.0	29.0	19.8	9.5		
	17	5/8													
--_4GB7- --_4GB5- B (204)	12	1/2	2-1/2	19/32	1-37/64	1/2	1-33/64	9/16	1-3/32	63/64	1-5/32	59/64	3/8	.6	__IUBO-B
	15	9/16	63.5	15.1	40.1	12.7	38.5	14.3	27.8	25.0	29.4	23.4	9.5		
	17	5/8													
--_4GC7- --_4GC5- C (205)	25	13/16	2-3/4	21/32	1-45/64	1/2	1-37/64	5/8	1-5/32	1-3/64	1-9/32	59/64	3/8	.8	__IUCO-C
		7/8	69.9	16.7	43.3	12.7	40.1	15.9	29.4	26.6	32.5	23.4	9.5		
		15/16													
--_4GD7- --_4GD5- D (206)	30	1	3-1/4	43/64	1-31/32	35/64	1-3/4	3/4	1-7/32	1-19/64	1-7/16	1-5/64	31/64	1.1	__IUDO-D
		1-1/16	82.6	17.1	35.7	13.9	44.5	19.1	31.0	32.9	36.5	27.4	11.9		
		1-1/8													
--_4GE7- --_4GE5- E (207)	35	1-3/16	3-5/8	53/64	2-5/16	9/16	1-15/16	15/16	1-25/64	1-31/64	1-49/64	1-7/64	1/2	1.4	__IUEO-E
		1-1/4	92.1	21.0	58.7	14.3	49.2	23.8	35.3	37.7	44.8	28.2	12.7		
		1-5/16													
--_4GF7- --_4GF5- F (208)	40	1-7/16	4	27/32	2-27/64	21/32	2-7/64	31/32	1-1/2	1-37/64	1-13/16	1-17/64	9/16	1.6	__IUFO-F
		1-1/2	101.6	21.4	61.5	16.7	53.6	24.6	38.1	40.1	46.0	32.1	14.3		
		1-9/16													
--_4GG7- --_4GG5- G (209)	45	1-1/2	4-1/8	27/32	2-31/64	21/32	2-7/64	1-1/32	1-1/2	1-41/64	1-7/8	1-17/64	9/16	2.0	__IUGO-G
		1-5/8	104.8	21.4	63.1	16.7	53.6	26.2	38.1	41.7	47.6	32.1	14.3		
		1-11/16													
--_4GH7- --_4GH5- H (210)	50	1-11/16	4-3/8	27/32	2-31/64	21/32	2-7/64	1-1/32	1-1/2	1-41/64	1-7/8	1-17/64	9/16	2.2	__IUHO-H
		1-3/4	111.1	21.4	63.1	16.7	53.6	26.2	38.1	41.7	47.6	32.1	14.3		
		1-13/16													
--_4GI7- --_4GI5- I (211)	55	1-15/16	5-1/8	31/32	2-49/64	11/16	2-17/64	1-3/16	1-21/32	1-51/64	2-5/32	1-19/64	9/16	3.3	__IUIO-I
		2	130.2	24.6	70.2	17.5	57.5	30.2	42.1	45.6	54.8	32.9	14.3		
		2-1/16													
--_4GJ7- --_4GJ5- J (212)	60	2-3/16	5-5/8	1-7/64	3-1/8	23/32	2-7/16	1-13/32	1-53/64	2-1/16	2-33/64	1-21/64	9/16	4.0	__IUJO-J
		2-1/4	142.9	28.2	79.4	18.3	61.9	35.7	46.4	51.2	63.9	33.7	14.3		
		2-5/16													
--_4GK7- --_4GK5- K (214)	70	2-7/16	5-7/8	1-9/32	3-25/64	13/16	2-57/64	1-5/16	2-3/32	2-7/64	2-19/32	1-39/64	3/4	6.1	__IUKO-K
		2-1/2	149.2	32.5	86.1	20.6	73.4	33.3	53.2	53.6	65.9	40.9	19.1		
		2-5/8													
--_4GL7- --_4GL5- L (215)	75	2-11/16	6	1-13/32	3-29/64	7/8	3-5/64	1-1/4	2-9/32	2-3/64	2-21/32	1-43/64	3/4	7.0	__IULO-L
		2-3/4	152.4	35.7	87.7	22.2	78.2	31.8	57.9	52.0	67.5	42.5	19.1		
		2-13/16													

For housing dimensions.....see page D-9 (GREY)
 For solid bearing inserts.....see page H-4&5 (WHITE)

SOLUTION® NARROW SLOT TAKE-UP POLYMER HOUSING w/ POLY-ROUND INSERT



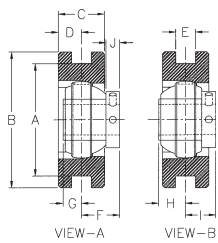
Mounting pattern interchanges with:
Dodge NSTU-SC, -SCTC, -SCM
Hub City TU



7- specifies use with a locking sleeve 5- specifies use without a locking sleeve

MOUNTED SET P/N GROUP (RING)	Shaft Diameter		A	B	C	D	E	F	G	H	I	J	Wt. in lbs.	Replacement Polymer Bearing
	mm	in.	in. mm	in. mm	in. mm	in. mm	in. mm	in. mm	in. mm	in. mm	in. mm	in. mm		
_ _5GA7- _ _5GA5- A (203)	12 15 17	1/2	2	2-1/2	1	1/2	1/4	63/64	3/8	9/16	25/32	3/8		_ _IUAO-A
		9/16	50.8	63.5	25.4	12.7	6.4	25.0	9.5	14.3	19.8	9.5		
		5/8												
		11/16												
_ _5GB7- _ _5GB5- B (204)	12 15 17 20	1/2	2-5/8	3-1/8	1-3/8	11/16	1/4	63/64	1/2	9/16	59/64	3/8	.7	_ _IUBO-B
		9/16	66.7	79.4	34.9	17.5	6.4	25.0	12.7	14.3	23.4	9.5		
		5/8												
		11/16												
_ _5GC7- _ _5GC5- C (205)	25	13/16	2-5/8	3-1/8	1-3/8	11/16	1/4	1-3/64	1/2	5/8	59/64	3/8	.3	_ _IUCO-C
		7/8	66.7	79.4	34.9	17.5	6.4	26.6	12.7	15.9	23.4	9.5		
		15/16												
		1												
_ _5GD7- _ _5GD5- D (206)	30	1	3-1/2	4-1/8	1-3/8	11/16	1/4	1-19/64	35/64	3/4	1-5/64	31/64	1.1	_ _IUDO-D
		1-1/16	88.9	104.8	34.9	17.5	6.4	32.9	13.9	19.1	27.4	11.9		
		1-1/8												
		1-3/16												
_ _5GE7- _ _5GE5- E (207)	35	1-3/16	3-1/2	4-1/8	1-3/8	11/16	1/4	1-31/64	9/16	15/16	1-7/64	1/2	1.4	_ _IUEO-E
		1-1/4	88.9	104.8	34.9	17.5	6.4	37.7	14.3	23.8	28.2	12.7		
		1-5/16												
		1-3/8												
_ _5GF7- _ _5GF5- F (208)	40	1-7/16	4	4-3/4	1-5/8	13/16	5/16	1-37/64	21/32	31/32	1-17/64	9/16	2.0	_ _IUFO-F
		1-1/2	101.6	120.7	41.3	20.6	7.9	40.1	16.7	24.6	32.1	14.3		
		1-9/16												
		1-5/8												
_ _5GG7- _ _5GG5- G (209)	45	1-1/2	4	4-3/4	1-5/8	13/16	5/16	1-41/64	21/32	1-1/32	1-17/64	9/16	2.2	_ _IUGO-G
		1-5/8	101.6	120.7	41.3	20.6	7.9	41.7	16.7	26.2	32.1	14.3		
		1-11/16												
		1-3/4												
_ _5GH7- _ _5GH5- H (210)	50	1-11/16	4	4-3/4	1-5/8	13/16	5/16	1-41/64	21/32	1-1/32	1-17/64	9/16	2.3	_ _IUHO-H
		1-3/4	101.6	120.7	41.3	20.6	7.9	41.7	16.7	26.2	32.1	14.3		
		1-13/16												
		1-7/8												
_ _5GI7- _ _5GI5- I (211)	55	1-15/16	4-7/16	5-3/8	1-3/4	7/8	5/16	1-51/64	11/16	1-3/16	1-19/64	9/16		_ _IUIO-I
		2	112.7	136.1	44.5	22.2	7.9	45.6	17.5	30.2	32.9	14.3		
		2-1/16												
		2-1/8												
_ _5GJ7- _ _5GJ5- J (212)	60	2-3/16	4-15/16	5-3/4	1-3/4	7/8	5/16	2-1/16	23/32	1-13/32	1-21/64	9/16		_ _IUJO-J
		2-1/4	125.4	146.1	44.5	22.2	7.9	51.2	18.3	35.7	33.7	14.3		
		2-5/16												
		2-3/8												
_ _5GK7- _ _5GK5- K (214)	70	2-7/16	5-1/2	6-3/8	2	1	3/8	2-7/64	13/16	1-5/16	1-39/64	3/4		_ _IUKO-K
		2-1/2	139.7	161.9	50.8	25.4	9.5	53.6	20.6	33.3	40.9	19.1		
		2-5/8												
		2-11/16												
_ _5GL7- _ _5GL5- L (215)	75	2-11/16	5-7/8	6-3/4	2	1	3/8	2-3/64	7/8	1-1/4	1-43/64	3/4		_ _IULO-L
		2-3/4	149.2	171.5	50.8	25.4	9.5	52.0	22.2	31.8	42.5	19.1		
		2-13/16												
		2-7/8												

For housing dimensions.....see page D-10 (GREY)
For solid bearing inserts.....see page H-4&5 (WHITE)



SOLUTION® WIDE SLOT TAKE-UP POLYMER HOUSING w/ POLY-ROUND INSERT

Mounting pattern interchanges with:
 Dodge WSTU-SC, -SCM, -VSC
 Fafnir RTU
 Sealmaster ST
 AMI TPL
 Hub City WSTU



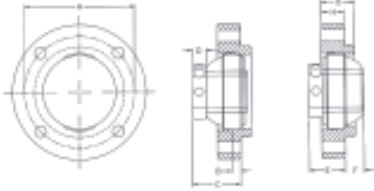
7- specifies use with a locking sleeve 5- specifies use without a locking sleeve

MOUNTED SET P/N GROUP (RING)	Shaft Diameter		A	B	C	D	E	F	G	H	I	J	Wt. in lbs.	Replacement Polymer Bearing
	mm	in.	in. mm	in. mm	in. mm	in. mm	in. mm	in. mm	in. mm	in. mm	in. mm	in. mm		
-- 7GA7- -- 7GA5- A (203)	12 15 17	1/2	2-1/2	3	1-1/8	9/16	13/32	63/64	3/8	9/16	25/32	3/8		__IUAO-A
		9/16	63.5	76.2	28.6	14.3	10.3	25.0	9.5	14.3	19.8	9.5		
		5/8												
-- 7GB7- -- 7GB5- B (204)	12 15 17 20	1/2	3	3-5/8	1-3/8	11/16	17/32	63/64	1/2	9/16	59/64	3/8	.8	__IUBO-B
		9/16	76.2	92.1	34.9	17.5	13.5	25.0	12.7	14.3	23.4	9.5		
		5/8												
-- 7GC7- -- 7GC5- C (205)	25	13/16	3	3-5/8	1-3/8	11/16	17/32	1-3/64	1/2	5/8	59/64	3/8	.9	__IUCO-C
		7/8	76.2	92.1	34.9	17.5	13.5	26.6	12.7	15.9	23.4	9.5		
		15/16												
-- 7GD7- -- 7GD5- D (206)	30	1	3-1/2	4-1/8	1-5/8	13/16	17/32	1-19/64	35/64	3/4	1-5/64	31/64	1.4	__IUDO-D
		1-1/16	88.9	104.8	41.3	20.6	13.5	32.9	13.9	19.1	27.4	11.9		
		1-1/8												
-- 7GE7- -- 7GE5- E (207)	35	1-3/16	3-1/2	4-1/8	1-5/8	13/16	17/32	1-31/64	9/16	15/16	1-7/64	1/2	1.5	__IUEO-E
		1-1/4	88.9	104.8	41.3	20.6	13.5	37.7	14.3	23.8	28.2	12.7		
		1-5/16												
-- 7GF7- -- 7GF5- F (208)	40	1-7/16	4	4-1/2	1-15/16	31/32	11/16	1-37/64	21/32	31/32	1-17/64	9/16	2.2	__IUFO-F
		1-1/2	101.6	114.3	49.2	24.6	17.5	40.1	16.7	24.6	32.1	14.3		
		1-9/16												
-- 7GG7- -- 7GG5- G (209)	45	1-1/2	4	4-5/8	1-15/16	31/32	11/16	1-41/64	21/32	1-1/32	1-17/64	9/16	2.3	__IUGO-G
		1-5/8	101.6	117.5	49.2	24.6	17.5	41.7	16.7	26.2	32.1	14.3		
		1-11/16												
-- 7GH7- -- 7GH5- H (210)	50	1-11/16	4	4-3/4	1-15/16	31/32	11/16	1-41/64	21/32	1-1/32	1-17/64	9/16	2.5	__IUHO-H
		1-3/4	101.6	120.7	49.2	24.6	17.5	41.7	16.7	26.2	32.1	14.3		
		1-13/16												
-- 7GI7- -- 7GI5- I (211)	55	1-15/16	5-1/8	5-7/8	2-1/2	1-1/4	1-1/16	1-51/64	11/16	1-3/16	1-19/64	9/16	2.9	__IUIO-I
		2	130.2	149.2	63.5	31.8	27.0	45.6	17.5	30.2	32.9	14.3		
		1-7/8												
-- 7GJ7- -- 7GJ5- J (212)	60	1-15/16	5-1/8	5-7/8	2-1/2	1-1/4	1-1/16	2-1/16	23/32	1-13/32	1-21/64	9/16	4.4	__IUJO-J
		2	130.2	149.2	63.5	31.8	27.0	51.2	18.3	35.7	33.7	14.3		
		1-7/8												
-- 7GK7- -- 7GK5- K (214)	70	2-7/16	5-15/16	6-11/16	2-3/4	1-3/8	1-1/16	2-7/64	13/16	1-5/16	1-39/64	3/4		__IUKO-K
		2-1/2	150.8	169.9	69.9	34.9	27.0	53.6	20.6	33.3	40.9	19.1		
		2-5/8												
-- 7GL7- -- 7GL5- L (215)	75	2-11/16	5-15/16	6-11/16	2-3/4	1-3/8	1-1/16	2-3/64	7/8	1-1/4	1-43/64	3/4	7.0	__IULO-L
		2-3/4	150.8	169.9	69.9	34.9	27.0	52.0	22.2	31.8	42.5	19.1		
		2-13/16												

For housing dimensions.....see page D-11 (GREY)
 For solid bearing inserts.....see page H-4&5 (WHITE)

ENGINEERING NOTES

SOLUTION® PILOTED FOUR BOLT FLANGED POLYMER HOUSING w/ POLY-ROUND INSERT



Mounting pattern interchanges with:
 MB PFC4-25, PFC4-35
 Hub City FC350
 Dodge FC-SC[®], FC-SCM
 Sealmaster SFC, MFC
 Fafnir RFC



7- specifies use with a locking sleeve 5- specifies use without a locking sleeve

MOUNTED SET P/N GROUP (RING)	Shaft Diameter		A	B	C	D	E	F	G	H	Wt. in lbs.	Replacement Polymer Bearing
	mm	in.	in. mm	in. mm	in. mm	in. mm	in. mm	in. mm	in. mm	in. mm		
--_24GC7- --_24GC5- C (205)	12 15 17	13/16 7/8 15/16 1	3-5/8 92.1	11/32 8.7	1-3/8 34.9	3/8 9.5	1-5/32 29.3	3/8 9.5	1-1/4 31.7	7/8 22.2	.8	--_IUCO-C
--_24GD7- --_24GD5- D (206)	12 15 17 20	1 1-1/16 1-1/8 1-3/16 1-1/4	3-5/8 92.1	11/32 8.7	1-5/8 41.2	31/64 11.9	1-5/16 33.3	33/64 13.1	1-1/4 31.7	7/8 22.2	.9	--_IUDO-D
--_24GE7- --_24GE5- E (207)	25	1-3/16 1-1/4 1-5/16 1-3/8 1-7/16	4-1/8 104.8	21/64 8.3	1-51/64 45.6	1/2 12.7	1-21/64 33.7	45/64 17.8	1-1/4 31.7	7/8 22.2	1.3	--_IUEO-E
--_24GF7- --_24GF5- F (208)	30	1-7/16 1-1/2 1-9/16 1-5/8	4-3/8 111.1	5/16 7.9	1-7/8 47.6	9/16 14.3	1-15/32 37.3	3/4 19.1	1-5/16 33.3	7/8 22.2	1.5	--_IUFO-F
--_24GG7- --_24GG5- G (209)	35	1-1/2 1-5/8 1-11/16 1-3/4	4-3/8 111.1	5/16 7.9	1-15/16 49.2	9/16 14.3	1-15/32 37.3	13/16 20.6	1-5/16 33.3	7/8 22.2	1.9	--_IUGO-G
--_24GG/DSC7- --_24GG/DSC5- G (209)	40	1-1/2 1-5/8 1-11/16 1-3/4	4-3/4 120.7	5/16 7.9	1-15/16 49.2	9/16 14.3	1-15/32 37.3	13/16 20.6	1-5/16 33.3	7/8 22.2	2.1	--_IUGO-G
--_24GH7- --_24GH5- H (210)	45	1-11/16 1-3/4 1-13/16 1-7/8 1-15/16 2	5-1/8 130.2	15/64 6.0	1-55/64 47.2	9/16 14.3	1-25/64 35.2	57/64 22.6	1-1/2 38.1	7/8 22.2	1.8	--_IUHO-H
--_24GI7- --_24GI5- H (210)	50	1-15/16 2 2-1/16 2-1/8 2-3/16 2-1/4	5-3/8 136.5	3/16 4.7	2-1/32 51.6	9/16 14.3	1-7/16 36.5	1-1/32 26.1	1-1/2 38.1	7/8 22.2	2.6	--_IUIO-I
--_24GJ7- --_24GJ5- J (212)	55	2-3/16 2-1/4 2-5/16 2-3/8 2-7/16	6 152.4	3/16 4.7		9/16 14.3			1-7/8 47.6	1 25.4		--_IUJO-J
--_24GK7- --_24GK5- K (214)	60	2-7/16 2-1/2 2-5/8 2-11/16 2-3/4	6-1/2 165.1	7/64 2.7		3/4 19.1			2 50.8	1 25.4		--_IUKO-K
--_24GL7- --_24GL5- L (215)	70	2-11/16 2-3/4 2-13/16 2-7/8 2-15/16 3	7-1/2 190.5	1/8 3.1		3/4 19.1			2-1/8 54.0	1 25.4		--_IULO-L
--_24GM7- --_24GM5- M (216)	75	2-3/4 2-15/16 3 3-1/8 3-3/16	7-1/2 190.5	1/8 3.1		3/4 19.1			2-1/8 54.00	1 25.4		--_IUMO-M

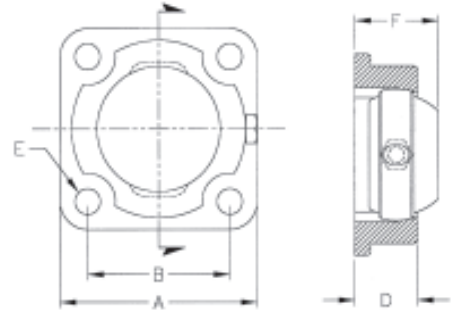
For housing dimensions.....see page D-13 (GREY)
 For solid bearing inserts.....see page H-4&5 (WHITE)

SOLUTION® SMALL FOUR BOLT POLYMER HOUSING w/ POLY-ROUND INSERT



Mounting pattern interchanges with:

Dodge F4B-LM8 Solidlube® LM800
Dodge F4B-BO Bronzoil®



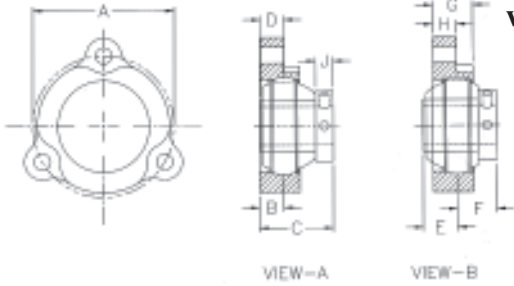
7- specifies use with a locking sleeve
5- specifies use without a locking sleeve

Mounted Set P/N	Shaft Diameter		A	B	D	E	F	Bolt Size	Wt. in lbs.
	mm	in.	in. mm	in. mm	in. mm	in. mm	in. mm		
__4GC-017- __4GC-015- C (205)		3/4 1	3-1/8 79.4	2-1/4 57.15	63/64 25.1	13/32 10.3	1-21/64 33.5	3/8	.2

Solidlube® and Bronzoil® are registered trademarks of Dodge® - a division of Rockwell Automation

For housing dimensions.....see page D-14 (GREY)
For solid bearing inserts.....see page H-4&5 (WHITE)

SOLUTION® THREE BOLT FLANGED POLYMER HOUSING w/ POLY-ROUND INSERT



Mounting pattern interchanges with:
 Dodge SC LF: LF-SC-
 Fafnir RFD, RFDR
 Hub City FB100-, FB110-
 Sealmaster LF-, LF-_E



7- specifies use with a locking sleeve
 5- specifies use without a locking sleeve

Mounted Set P/N Group (Ring)	Shaft Diameter		A	B	C	D	E	F	G	H	J	Housing P/N	Wt. in lbs.	Replacement Polymer Bearing
	mm	inches	in. mm	in. mm	in. mm	in. Mm	in. mm	in. mm	In. mm	In. mm	In. mm			
-- 22GA7- -- 22GA5- A (203)	12	1/2	2.39	13/32	1-25/64	3/8	9/16	25/32	11/16	3/8	3/8	22GA-01		-- IUAO-A
	15	9/16	60.7											
	17	5/8	2.50	10.4	35.21	9.5	14.3	19.8	17.5	9.5	9.5	22GA		
-- 22GB7- -- 22GB5- B (204)	12	1/2	2-13/16	29/64	1-11/64	1/2	9/16	59/64	25/32	27/64	3/8	22GB		-- IUBO -B
	15	9/16												
	17	5/8												
	20	11/16												
-- 22GC7- -- 22GC5- C (205)	25	13/16	3	35/64	1-35/64	1/2	5/8	59/64	27/32	1/2	3/8	22GC		-- IUCO -C
		7/8												
		15/16												
-- 22GD7- -- 22GD5- D (206)	30	1	3-9/16	37/64	1-55/64	35/64	3/4	1-5/64	7/8	15/32	31/64	22GD		-- IUOD -D
		1-1/16												
		1-1/8												
		1-3/16												
-- 22GE7- -- 22GE5- E (207)	35	1-3/16	3-15/16	11/16	2-5/32	9/16	15/16	1-7/64	15/16	21/32	1/2	22GE		-- IUEO -E
		1-1/4												
		1-5/16												
		1-3/8												
-- 22GF7- -- 22GF5- F (208)	40	1-7/16	4-11/16			21/32	31/32	1-17/64	1-1/8	5/8	9/16	22GF		-- IUFO -F
		1-1/2												
		1-9/16												
		1-5/8												
-- 22GG7- -- 22GG5- G (209)	45	1-1/2	4-3/4			21/32	1-1/32	1-7/64	1-1/8	5/8	9/16	22GG		-- IUGO -G
		1-5/8												
		1-11/16												
		1-3/4												
-- 22GH7- -- 22GH5- H (210)	50	1-11/16	5			21/32	1-1/32	1-7/64	1-1/8	5/8	9/16	22GH		-- IUHO -H
		1-3/4												
		1-13/16												
		1-7/8												
	1-15/16	2												

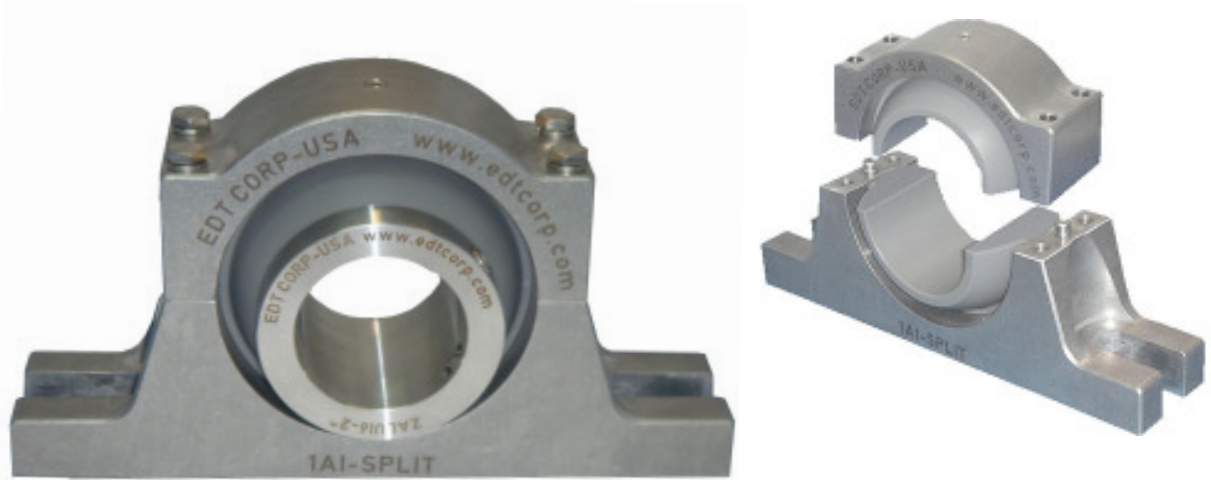
Round bolt holes are standard.
 Square bolt holes are available - if required, please call for price and lead time.

For housing dimensions, see page D-15 (Gray)
 For Poly-Round® insert dimensions, see pages H-4 and H-5 (White)
 For other mounted assemblies, see pages H-15 (White), C-15 (Orange), and K-15 (Light Gray)

ENGINEERING NOTES



SPLIT STAINLESS MOUNTED BEARINGS



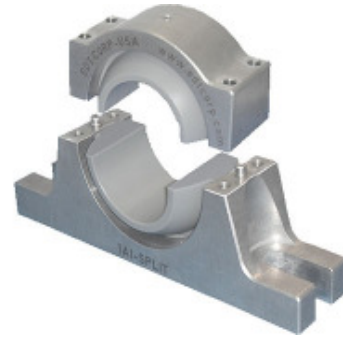
Greaseless and non-corrosive split bearings directly interchange with industry-standard 1-piece pillow blocks

- Stainless steel housings and split Poly-Round® inserts are solid construction for maximum clean-ability and strength
- Dimensionally interchanges with industry-standard pillow blocks
- Poly-Round® plane bearings do not require grease
- Low maintenance
- Non-corrosive
- Sanitary



Severe service locations where grease-less Poly-Round® bearings are well-suited:

- high or low temperatures
- submerged (water, chemicals, processing fluids)
- washdown
- steam
- oscillating motion
- frequent start-stop cycles
- impact or vibration
- high load
- difficult-to-maintain locations
- jack shafts with center bearings



APPLICATIONS TO AVOID

Plane bearings are **not** recommended for:

- high speed devices (fans, pumps, table top conveyors)
- high tension applications (V-belt drives, flat belt conveyors, urethane belts)
- overhung loads (shaft mounted gear reducers)
- trunnion applications

For locations where plane bearings are not recommended, choose a ball bearing (one-piece, not a split insert).

- EDT offers:
- stainless ball bearings - regreaseable
 - solid lubricated (choice of two solid lubricants depending on application)
 - standard ball bearings - large shaft size units that are corrosion-resistant and solid lubricated
 - solid lubricated for hot, dry locations (ie: ovens not subject to washdown)

MATERIAL SELECTION CHART

ALL-ROUND® Bearing Materials	PV (1) Limit	Maximum Speed V (SFM)	Maximum Loading P (PSI)	Continuous Operating Temp.	Performance in Moisture		ΔT Dimensional Stability w/Temp Change	Chemical Resistance	Abrasion Resistance	Impact Resistance	USDA/FDA Contact Approval
					Washdown	Submerged					
PA UHMW white	1,000	50	800	150°F	Excellent	Excellent	Poor	Excellent	Abrasion applications are very unpredictable. Each application must be tested for abrasion resistance.	Excellent	Direct
NA grey	6,000	350	2,000	220°F	Excellent	Good	Fair	Fair		Excellent	Incidental
FA white	6,000	350	1,000	500°F	Excellent	Excellent	Poor	Excellent		Fair	Direct
QF black	60,000	400	6,000	500°F	Excellent	Excellent	Excellent	Excellent		Fair	Incidental

(1) PV limits are shown for unlubricated radial bearing applications. Low temperature and/or cool submerged installations may permit PV limits up to 2x higher. For high ambient temperatures including warm submerged installations, calculated PV's must be reduced.



DESIGN ASSISTANCE

A completed **Bearing Design Checklist** will assist EDT in helping you select the most appropriate interchange for your radial bearing needs.

EDT's **Bearing Design Checklist (BDC)**

can be submitted electronically or printed from EDT's website:

www.edtcorp.com > **Design Assistance** > **Bearing Design Checklist**