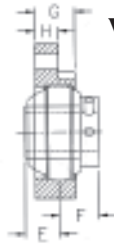
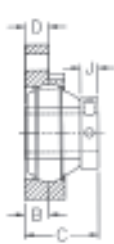
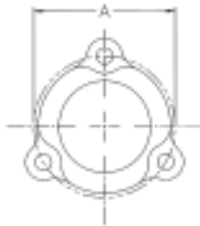


## SOLUTION® THREE BOLT FLANGED POLYMER HOUSING w/ POLY-ROUND INSERT



VIEW-A

VIEW-B

Mounting pattern interchanges with:  
 Dodge SC LF: LF-SC-  
 Fafnir RFD, RFDR  
 Hub City FB100-, FB110-  
 Sealmaster LF-, LF-\_E



7- specifies use with a locking sleeve  
 5- specifies use without a locking sleeve

Mounted Set P/N Group (Ring)	Shaft Diameter		A	B	C	D	E	F	G	H	J	Housing P/N	Wt. in lbs.	Replacement Polymer Bearing
	mm	inches	in. mm	in. mm	in. mm	in. Mm	in. mm	in. mm	In. mm	In. mm	In. mm			
-- <b>22GA7-</b> -- <b>22GA5-</b> A (203)	12	1/2	2.39	13/32	1-25/64	3/8	9/16	25/32	11/16	3/8	3/8	<b>22GA-01</b>		-- IUAO-A
	15	9/16	60.7											
	17	5/8	2.50	10.4	35.21	9.5	14.3	19.8	17.5	9.5	9.5	<b>22GA</b>		
-- <b>22GB7-</b> -- <b>22GB5-</b> B (204)	12	1/2	2-13/16	29/64	1-11/64	1/2	9/16	59/64	25/32	27/64	3/8	<b>22GB</b>		-- IUBO -B
	15	9/16												
	17	5/8												
	20	11/16												
-- <b>22GC7-</b> -- <b>22GC5-</b> C (205)	25	13/16	3	35/64	1-35/64	1/2	5/8	59/64	27/32	1/2	3/8	<b>22GC</b>		-- IUCO -C
		7/8												
		15/16												
-- <b>22GD7-</b> -- <b>22GD5-</b> D (206)	30	1	3-9/16	37/64	1-55/64	35/64	3/4	1-5/64	7/8	15/32	31/64	<b>22GD</b>		-- IUOD -D
		1-1/16												
		1-1/8												
		1-3/16												
-- <b>22GE7-</b> -- <b>22GE5-</b> E (207)	35	1-3/16	3-15/16	11/16	2-5/32	9/16	15/16	1-7/64	15/16	21/32	1/2	<b>22GE</b>		-- IUEO -E
		1-1/4												
		1-5/16												
		1-3/8												
-- <b>22GF7-</b> -- <b>22GF5-</b> F (208)	40	1-7/16	4-11/16			21/32	31/32	1-17/64	1-1/8	5/8	9/16	<b>22GF</b>		-- IUFO -F
		1-1/2												
		1-9/16												
		1-5/8												
-- <b>22GG7-</b> -- <b>22GG5-</b> G (209)	45	1-1/2	4-3/4			21/32	1-1/32	1-7/64	1-1/8	5/8	9/16	<b>22GG</b>		-- IUGO -G
		1-5/8												
		1-11/16												
		1-3/4												
-- <b>22GH7-</b> -- <b>22GH5-</b> H (210)	50	1-11/16	5			21/32	1-1/32	1-7/64	1-1/8	5/8	9/16	<b>22GH</b>		-- IUHO -H
		1-3/4												
		1-13/16												
		1-7/8												
	1-15/16	2												

Round bolt holes are standard.  
 Square bolt holes are available - if required, please call for price and lead time.

For housing dimensions, see page D-15 (Gray)  
 For Poly-Round® insert dimensions, see pages H-4 and H-5 (White)  
 For other mounted assemblies, see pages H-15 (White), C-15 (Orange), and K-15 (Light Gray)