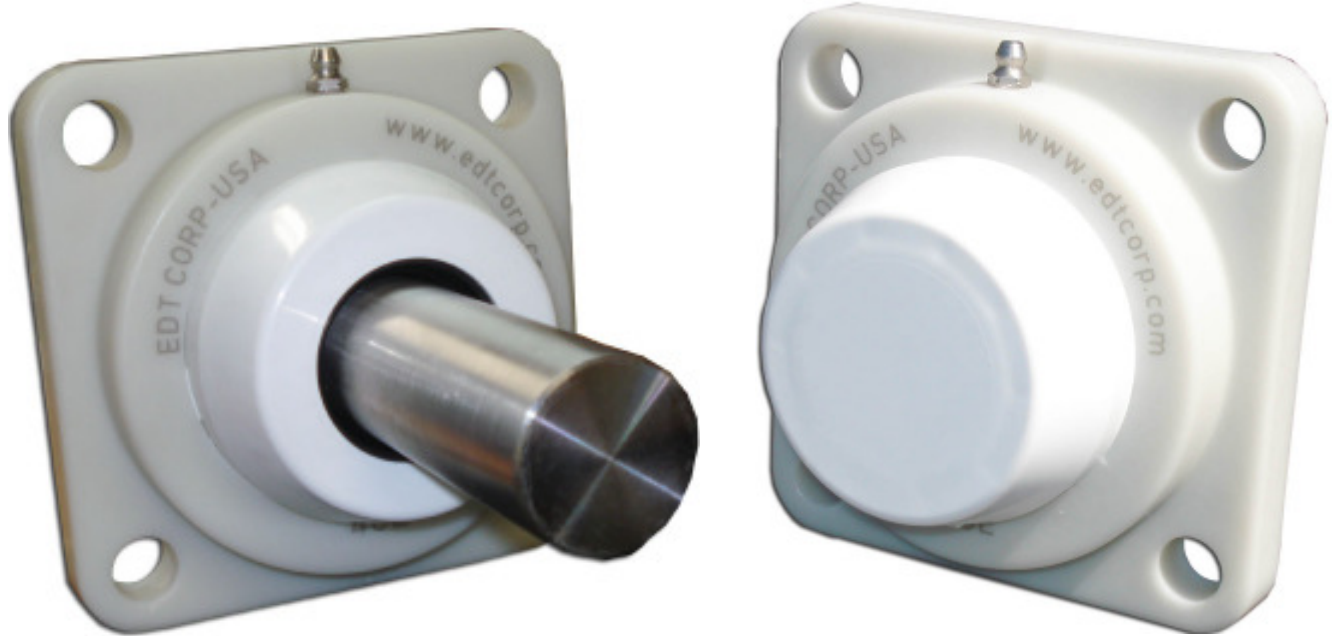




## **SOLUTION<sup>®</sup> HOUSINGS WITH SAFETY CAPS**



### **Cast polymer bearing housings with blind- or thru-bore safety caps**

- Smooth lines minimize places that are difficult to clean
- No additional hardware necessary
- Available in all bearing styles
- Available for insert sizes 47mm (204 ring) to 90 mm (210 ring) sizes
- Housings accept EDT and other industry-standard bearing inserts

edtcorp.com  
edtsales@edtcorp.com

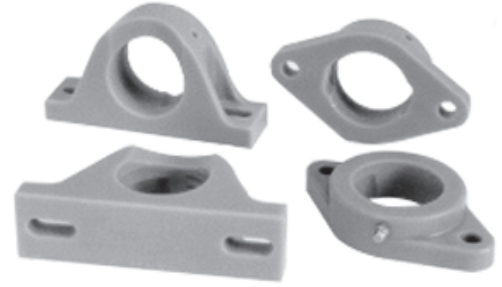
**EDT CORP**  
1006-J NE 146th Street  
Vancouver, WA 98685

PHONE 360-574-7294  
FAX 360-574-3834

# EDT SOLUTION® POLYMER HOUSINGS & CAPS

## FEATURES AND BENEFITS:

- Housings are sanitary, easy to clean, won't chip or peel
- Housing mounting surfaces smooth and flat.
- Gray color complements stainless equipment.
- Housing available in all styles and sizes; blind caps and thru caps available for most popular sizes
- Housing can be reusable many times. New caps can be purchased separately
- Cap fits over most kinds of insert bearings, including:



Ball bearing

(EDT stainless or any brand)  
(regreasable or solid-lubricated)



3-piece ALL-ROUND® bearing



Poly-Round® bearing

No grease in EDT plane bearings results in cleanest bearing operation over time

### PART NUMBERING OF EDT SOLUTION® HOUSING INCLUDING A SAFETY CAP

Bearing Identifier	Housing Shape	Housing Style (material)	EDT Group size correlates to insert OD	Shape modifier & cap identifier	Assembly modifier	- Shaft size
ZY NA QB QF ZJ ZW etc...	1 or 10 = PB 2 = 2-bolt 3 = 3-bolt flange 4 = 4-bolt flange 6 = small 2-bolt 8 = hangar 9 = tapped base	G = Polymer	B = 204 ring/47 mm C = 205 ring/52 mm D = 206 ring/62 mm E = 207 ring/72 mm F = 208 ring/80 mm H = 210 ring/90 mm	- CB = blind cover - TB = thru cover	8 - ball bearing assembly 9 or 7 or 4 - Poly-Round® with sleeve assembly 5 or 3 - Poly-Round® without sleeve assembly	- inch or metric
<p>Example: ZY4GC-CB8-1 or NA4GE-CB7-1-1/4 (shown in cover photo, right side) ZY4GC-TB8-25 or NA4GE-TB7-1-3/8 (shown in cover photo, left side)</p>						

For polymer housings: Section D (GRAY)  
For All-Round® Bearings: Section C (ORANGE)  
For Poly-Round® Bearings: Section J (AMBER)  
For stainless ball bearings: Section K (LIGHT GRAY)