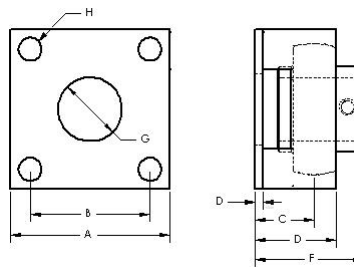




## QuiKlean® Breader Bearing offers lowest maintenance in a high-problem area

EDT's assembly of a stainless QuiKlean® housing with solid lubricated stainless ball bearing directly retrofits onto Stein models: XL-34, XL-40, XL-48 and Flour Max

- Housing with integral standoff permits maximum washdown
- Plastic backing plate is a food-grade exclusionary seal
- Stainless ball bearing is corrosion resistant, solid lubricant eliminates grease and the need to re-grease.



A = 2-1/2" / 63.5 mm  
 C = 59/64" / 23.5 mm  
 D = 1-9/32" / 32.4mm  
 F = 1-45/64" / 43.3 mm  
 G = 1" shaft size  
 H = 5/16" bolt

### Product part numbers

"B" dimension	Assembly	QuiKlean® Housing	Bearing	Backing Plate
				
1-7/8" bolt distance	ZJZA100-QK8-1	ZA100-QK	205-16-J	PA100-1
1-3/4" bolt distance	ZJZA101-QK8-1	ZA101-QK		

