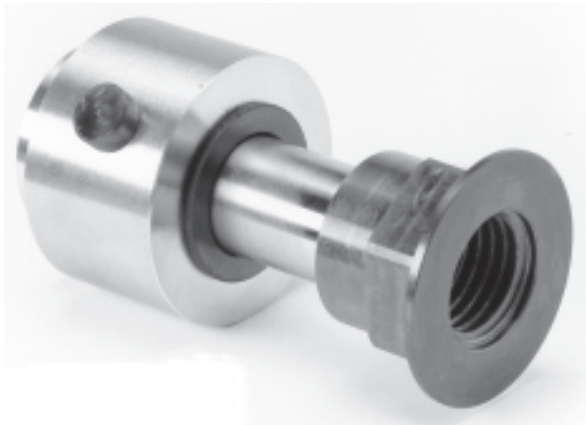




## POTATO PEELER BEARING SETS



### VanMark Peeler Bearing

ZAH248E    hardened stainless sleeve  
[ZAH248D    sleeve for Model 2700 ]  
ZA237.3A    stainless housing  
QF247B    flanged polymer bearing

EDT SBR indicates 3-piece assembly



### Lyco Peeler Bearing

ZAH130A    hardened sleeve  
ZA237.3A    stainless housing  
              includes anti-rotation pin  
QF247B    flanged polymer bearing

Customer must have urethane outer-housing

Peeler bearing assemblies are designed for the discharge-end of the rollers.

- Plane bearing Peeler Bearings are NOT designed to be used on the drive/infeed end.
- Maximum recommended rpm is 350. (At higher speeds, bearings do not last as long.)
- Processing fluid on the output/wet end helps to keep the polymer bearing material cool
- Can change-out components as needed (not necessary to get all new assembly each time that peeler/scrubber brushes are changed)