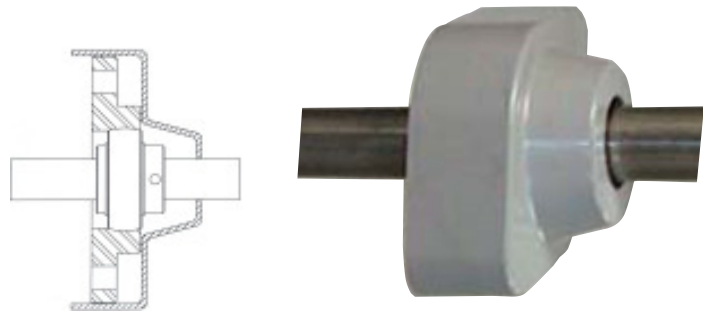




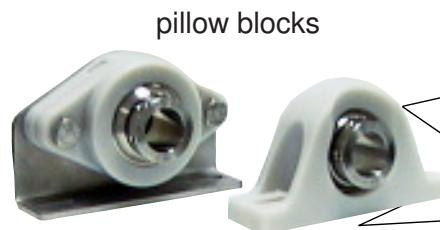
THE BEARING GLOVE®

***With the EDT Bearing Glove® ...
run bearings in bulk solids, powders, abrasives
...like you have never run them before!***



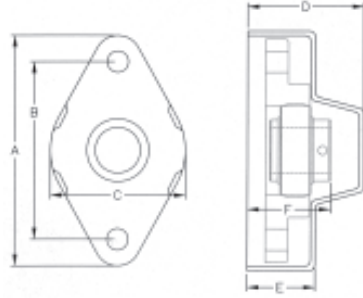
Features and Benefits

- Shield bearing 360° from solid contaminants
- Full sealing protection to reduce maintenance and eliminate regreasing
- Provides complete OSHA protection for rotating shafts
- Smooth surfaces and rounded edges for maximum cleanability
- Use with any brand of bearing (ball bearing recommended)
- Retrofit 2-bolt, 4-bolt, and pillow block with The Glove® + 2-bolt bearing



**The Glove®
now available for
shafts from 3/4" - 2-3/4"
(25mm - 70 mm)**

Bearing Solution for Solid Contaminants



3-piece assembly of standard and stocked parts



cover
(with seal if thru-bore)

bearing (use any brand,
ball bearing recommended)

base with seal

2-BOLT GLOVE® ASSEMBLY P/N GROUP (RING)	Shaft Diameter		A	B	C	D	E	F	Bolt Size	Wt. in lbs
	in./ mm		in. mm	in. mm	in. mm	in. mm	in. mm	in. mm		
GA2UCO- C (205)	3/4 7/8 15/16	1 25 mm	5.25 133.3	3.89 98.8	3.23 82.0	2.61 66.3	1.53 38.8	1.87 47.5	7/16	0.3
GA2UDO- D (206)	1 1-1/16 1-1/8	1-3/16 1-1/4 30mm	5.84 148.3	4.59 116.7	3.86 98.0	3.05 77.47	1.9 48.26		7/16	
GA2UEO- E (207)	1-3/16 1-1/4 1-15/16	1-3/8 1-7/16 35mm	6.59 167.4	5.12 130.2	4.44 112.65	3.38 85.8	2.05 52.0		1/2	
GA2UFO- F (208)	1-7/16 1-1/2 1-9/16	1-5/8 40 mm	7.26 184.1	5.66 143.6	4.93 125.2	3.44 87.3	2.13 53.9	2.31 58.7	1/2	0.7
GA2UHO- H (210)	1-11/16 1-3/4 1-13/16 1-7/8	1-15/16 2 50mm	7.96 202.2	6.19 157.2	5.48 139.1	3.5 88.9	2.19 55.5	2.56 65.0	1/2	0.8
GA2UKO- K (214)	2-7/16 2-1/2 2-5/8	2-11/16 2-3/4 70mm	10.55 267.9	8.31 211.1	7.69 197.8	4.84 122.9	3.34 84.8		5/8	1.8



PILLOW BLOCK ASSEMBLY P/N GROUP (RING)	Shaft Diameter		G	H	I	J	K	L	M	N	O	P	Q	Hsg Bolt	Wt. in lbs
	in.		in. mm	in. mm	in. mm	in. mm	in. mm	in. mm	in. mm	in. mm	in. mm	in. mm	in. mm	Bracket Bolt	
GA1UCO- C (205)	3/4 7/8 15/16	1 25 mm	1.94 49.3	3.56 90.3	.18 4.8	1.87 47.5	1.72 43.6	2.80 71.0	3.44 87.3	4.63 117.5	5.5 139.7	1.50 38.1	0.75 19.1	7/16 3/8	1.4
GA1UDO- D (206)	1 1-1/16 1-1/8	1-3/16 1-1/4 30mm	2.56 65.0	4.61 117.1	.19 4.8		2.20 55.8	3.23 82.0	4.13 104.78	5.13 130.18	6.09 154.78	1.75 44.45	.88 22.2	7/16 1/2	2.6
GA1UEO- E (207)	1-3/16 1-1/4 1-5/16	1-3/8 1-7/16 35mm	2.75 69.8	5.09 129.3	.18 4.5	3.93 99.8	2.38 60.4	3.68 93.4	4.68 119.0	5.43 138.1	6.56 166.7	1.75 44.4	0.87 22.2	1/2 1/2	2.6
GA1UFO- F (208)	1-7/16 1-1/2 1-9/16	1-5/8 40mm	2.75 69.9	5.22 132.5	.18 4.8	2.31 58.8	2.31 58.7	3.63 92.1	5.00 127.0	6.13 155.6	7.25 184.2	1.94 49.2	0.97 24.6	1/2 1/2	2.7
GA1UHO- H (210)	1-11/16 1-3/4 1-13/16 1-7/8	1-15/16 2 50mm	3.25 82.6	6.02 152.9	.25 6.4	2.56 65.0	2.44 61.9	3.75 95.3	5.88 149.2	6.75 171.5	8.13 206.4	2.25 57.2	1.13 28.6	1/2 5/8	3.9
GA1UKO- K (214)	2-7/16 2-1/2 2-5/8	2-11/16 2-3/4 70mm	AVAILABLE UPON REQUEST										5/8 3/4		

Use The Glove® over any brand 2-bolt bearing (ball bearing recommended)