

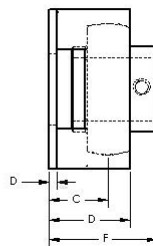
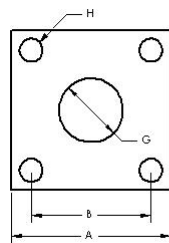


## QuiKlean® Breader Bearing offers lowest maintenance in a high-problem area

EDT's assembly of a stainless QuiKlean® housing with solid lubricated stainless ball bearing directly retrofits onto Stein models:

XL-34, XL-40, XL-48 and Flour Max

- Housing with integral standoff permits maximum washdown
- Plastic backing plate is a food-grade exclusionary seal
- Stainless ball bearing is corrosion resistant; solid lubricant eliminates grease and the need to re-grease



A = 2-1/2" / 63.5 mm  
 B (see chart below)  
 C = 59/64" / 23.5 mm  
 D = 1-9/32" / 32.4mm  
 F = 1-45/64" / 43.3 mm  
 G = 1" shaft size  
 H = 5/16" bolt

### Product part numbers

"B" dimension	Assembly	QuiKlean® Housing	Bearing	Backing Plate
				
1-7/8" bolt distance	ZZA100-QK8-1	ZA100-QK	205-16-J	PA100-1
1-3/4" bolt distance	ZZA101-QK8-1	ZA101-QK		



# COMPARE THE COSTS OF OWNERSHIP OF QUIKLEAN® BREADER BEARINGS

## EDT breader bearing saves money, time, and labor!

### Cost of OEM bearing over 1 year

Based on ss housing  
lasting 12 months and  
components lasting 1 month



<b>Cost to purchase OEM bearing</b>	
Component parts (\$15+\$21+\$15.54)	\$ 51.54
Stacked housing	+ 28.68
	<u>\$ 80.22</u>

<b>Cost to install OEM bearing</b>	
\$22/hr labor (37¢ per min) x 30 min	\$ 11.00

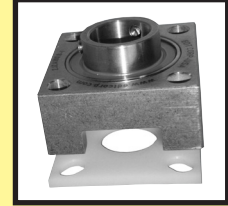
<b>Cost to lubricate OEM bearing</b>	
50¢/oz x 1 oz per day (i.e. Lubriplate® LFG)	\$ 0.50
Labor (37¢ per min) x 2 min	+ 0.74
x 260 (daily, 5 days/week x 52 weeks)	<u>x 260</u>
	<u>\$322.40</u>

<b>Cost to change out OEM components</b> (Reuse stacked housing for 1 year)	
Change out component parts	\$ 51.54
\$22/hr labor (37¢ per min) x 30 min	+ 11.00
x 11 months	<u>x 11</u>
	<u>\$687.94</u>

<b>Year 1</b>	
Cost of each bearing	<b>\$1,101.56</b>

### Cost of EDT breader bearing over 1 year

Based on ss housing  
lasting 24 months and  
insert lasting 6 months



<b>Cost to purchase EDT bearing</b>	
<b>ZJA100-QK8-1</b>	\$280.00

<b>Cost to install EDT bearing</b>	
\$22/hr labor (37¢ per min) x 30 min	\$ 11.00

<b>Cost to lubricate EDT bearing</b>	
No lubricant needed	0

<b>Cost to change out EDT components</b> Replace insert only, every 6 months	
<b>205-16-J</b>	\$130.00
\$22/hr labor (37¢ per min) x 30 min	+ 11.00
	<u>\$141.00</u>

<b>Year 1</b>	
Cost of each bearing	<b>\$432.00</b>

Original bearing cost \$1,101.56 per bearing over 1 year  
 versus EDT bearing cost \$ 432.00 per bearing over 1 year  
**FIRST-YEAR SAVINGS \$ 669.56 x 8 bearings per machine = \$5,356.48 savings**

<b>Year 2</b>	
Same cost as yr 1: Labor (\$11x12), bearing & housing(\$51.54x12, +28.68), lubrication (\$322.40)	<b>\$1,101.56</b>

<b>Year 2</b>	
Cost of insert (p/n 205-15-J \$130x2), labor (\$11 x 2)	<b>\$282.00</b>

OEM bearing cost \$ 2,203.12 per bearing over 2 years  
 versus EDT bearing cost \$ 714.00 per bearing over 2 years  
**2-YEAR SAVINGS \$ 1,489.12 x 8 bearings per machine = \$11,912.96 savings**

*The above illustration is based on average plant conditions.  
 Individual results can vary based on breading recipe, installation and maintenance practices, and environmental conditions.*