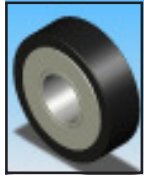


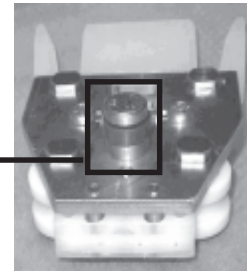
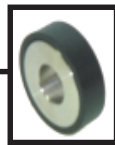
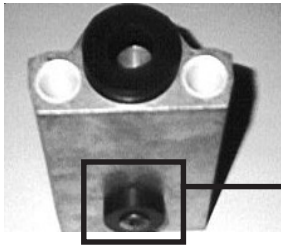
Ideal locations for Radial Poly-Rounds® include:

- extreme temperatures
- submerged (water, chemicals, processing fluids)
- washdown
- oscillating motion
- frequent start-stop cycles
- impact



Successful Radial Poly-Round® bearing applications include:

- guides and wheels
- low- and medium- speed rollers
- high- and low- temperature closers
- ovens
- freezers
- wash-down duty machinery



APPLICATIONS TO AVOID

Plane bearings are not recommended for:

- high speed devices (fans, pumps, table top conveyors)
- high tension applications (V-belt drives, flat belt conveyors, urethane belts)
- overhung loads (shaft mounted gear reducers)
- trunnion applications



DESIGN ASSISTANCE

A completed **Bearing Design Checklist** (BDC) will assist EDT in helping you select the most appropriate interchange for your radial bearing needs. EDT's **Bearing Design Checklist** can be submitted electronically or printed from EDT's website:

www.edtcorp.com > *Design Assistance* > **Bearing Design Checklist**