

NARROW POLY-ROUND® SUPREME w/ LOCKING SLEEVE

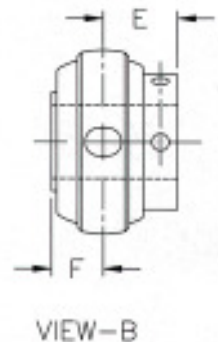
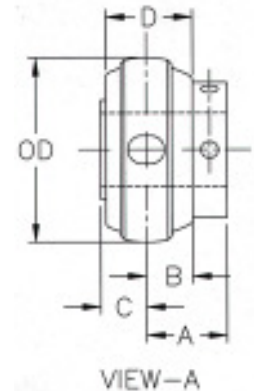
Solid polymer bearing insert with locking sleeve

Mounting pattern interchanges with:

Browning	VS + VE 100 series in VPE, VF2E, VF3E	SKF	G-FM series in S-FM, SR-FM, F-FM, FT-FM YET (most assemblies don't require short
Hub City	B100 series in FB100, FB150, FB110, FB160, FB100S, FB110S, PB100S	LTB)	Sealmaster V series in LFT, SSP, SSFT, SSF, TSSF, SSFF
Kilian	GKY ___ RRB (most assemblies don't require short	MB	MB-25 series in PS-25, FPS2-25, FPS3-25, TFPS3-25
LTB)		Dodge	SC series in P2B-SL, F2B-SL, F3B-SL, F4B-SL

__ = Material Identifier (see selection chart on page H-3)

MOUNTED SET P/N GROUP (RING)	Shaft Diameter x =		A	B	C	D	E	F	Wt in lbs	Replacement Polymer Bearing & Sleeve
	mm	in.	in. mm	in. mm	in. mm	in. mm	in. mm	in. mm		
__ IUA4-x A (203) 1.575 40	12 15 17	1/2 9/16 5/8 11/16	3/4 19.1	3/8 9.5	23/64 9.1	11/16 17.5	11/16 17.5	27/64 10.7	.2	__ IUA3-A ZAMUA6-x
__ IUB4-x B (204) 1.850 47	12 15 17 20	1/2 9/16 5/8 11/16 3/4 13/16	3/4 19.1	3/8 9.5	1/2 12.7	13/16 20.6	13/16 20.6	7/16 11.1	.3	__ IUB3-B ZAMUB6-x
__ IUC4-x C (205) 2.047 52	25	13/16 7/8 15/16 1	7/8 22.2	1/2 12.7	31/64 12.3	15/16 23.8	13/16 20.6	9/16 14.3	.4	__ IUC3-C ZAMUC6-x
__ IUD4-x D (206) 2.441 62	30	1 1-1/16 1-1/8 1-3/16 1-1/4	1-1/64 25.8	17/32 13.5	17/32 13.5	1-1/64 25.8	31/32 24.6	37/64 14.7	.6	__ IUD3-D ZAMUD6-x
__ IUE4-x E (207) 2.835 72	35	1-3/16 1-1/4 1-5/16 1-3/8 1-7/16	1-5/32 29.4	21/32 16.7	9/16 14.3	1-5/32 29.4	1 25.4	23/32 18.3	.8	__ IUE3-E ZAMUE6-x
__ IUF4-x F (208) 3.150 80	40	1-7/16 1-1/2 1-9/16 1-5/8	1-5/16 33.3	3/4 19.1	21/32 16.7	1-11/32 34.1	1-5/32 29.4	13/16 20.6	1.0	__ IUF3-F ZAMUF6-x
__ IUG4-x G (209) 3.346 85	45	1-1/2 1-5/8 1-11/16 1-3/4	1-19/64 32.9	47/64 18.7	21/32 16.7	1-21/64 33.7	1-5/32 29.4	51/64 20.2	1.2	__ IUG3-G ZAMUG6-x
__ IUH4-x H (210) 3.543 90	50	1-11/16 1-3/4 1-13/16 1-7/8 1-15/16 2	1-25/64 35.3	53/64 21.0	21/32 16.7	1-27/64 36.1	1-5/32 29.4	57/64 22.6	1.3	__ IUH3-H ZAMUH6-x
__ IUI4-x I (211) 3.937 100	55	1-15/16 2 2-1/16 2-1/8 2-3/16 2-1/4	1-33/64 38.5	61/64 24.2	11/16 17.5	1-37/64 40.1	1-3/16 30.2	1-1/64 25.8	1.8	__ IUI3-I ZAMUI6-x
__ IUJ4-x J (212) 4.331 110	60	2-3/16 2-1/4 2-5/16 2-3/8 2-7/16	1-55/64 47.2	1-19/64 32.9	23/32 18.3	1-61/64 49.6	1-7/32 31.0	1-23/64 34.5	2.0	__ IUJ3-J ZAMUJ6-x
__ IUK4-x K (214) 4.921 125	70	2-7/16 2-1/2 2-5/8 2-11/16 2-3/4	1-61/64 49.6	1-13/64 30.6	13/16 20.6	1-61/64 49.6	1-1/2 38.1	1-17/64 32.1	4.0	__ IUK3-K ZAMUK6-x



For ER locking sleeves dimensions.....see page F-9 (RED)