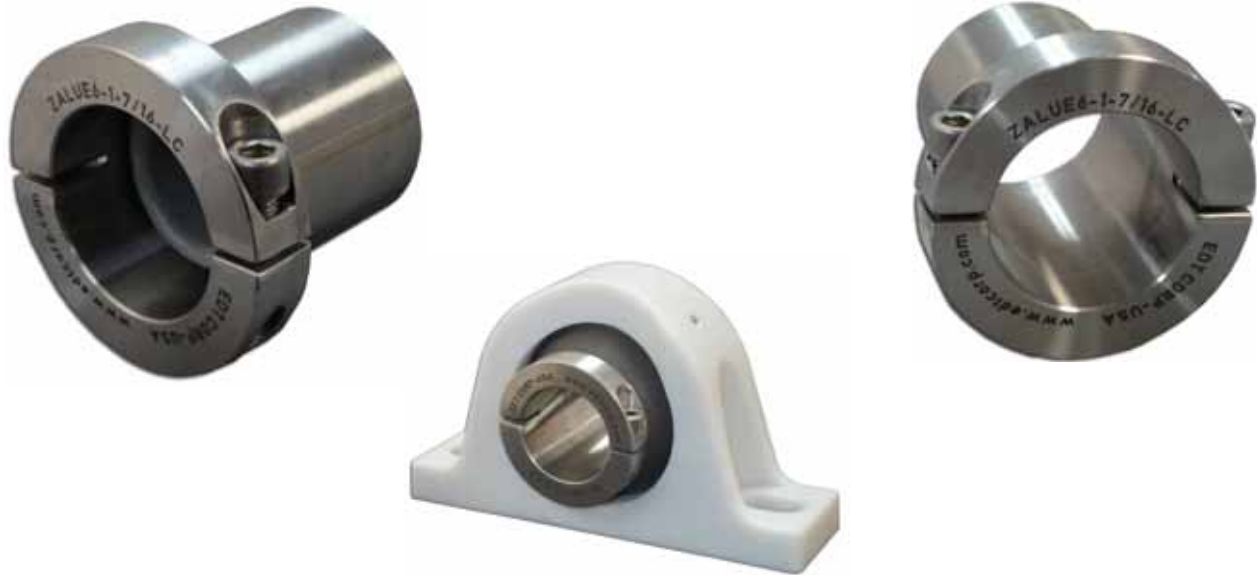




DOUBLELOCK™ LOCKING SLEEVES



DoubleLock™ split clamping locking sleeves provide twice the grip and staying power

316 stainless sleeves

- protect shafting from wear caused by a bearing
- offers maximum corrosion resistance
- provides a high quality and “tough” surface for bearing to operate
- “Tough” and “smooth” surface (8-12 rms) extends bearing life

A clamping mechanism like a split collar is the most secure method of holding a bearing in place in environments that have:

- High thrust
- Frequent temperature cycling

Setscrews located at 90 degrees to the shaft vibrate loose in these same locations whether on locking sleeves of plane bearings or setscrew lock ball bearings

DoubleLock™ sleeve accommodates twice the thrust loads of EDT's original locking sleeve design



edtcorp.com
edtsales@edtcorp.com

EDT CORP
1006-J NE 146th Street
Vancouver, WA 98685

PHONE 360-574-7294
FAX 360-574-3834

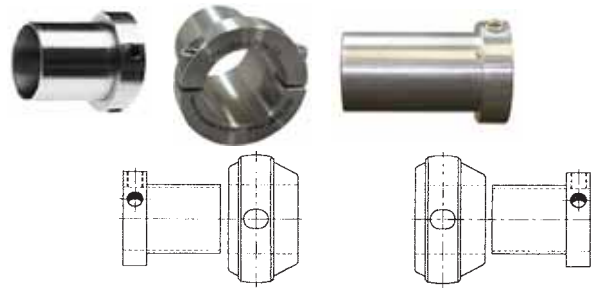
DL0908

Benefits of using Locking Sleeves with Plane Bearings

EDT stainless steel locking sleeves protect shaft surfaces from abrasion and the normal wear caused by plane bearings.

Locking sleeves provide:

- Improved bearing surface to increase bearing life
- Contain lateral shaft movement (replaces standard locking collar)
- Protection to shaft
- Abrasion resistant
- Repair damaged shafting



Locking sleeves can run on either side of the Poly-Round⁷ spherical insert, depending on the space available.

Extra Advantages of DoubleLock™ locking sleeves

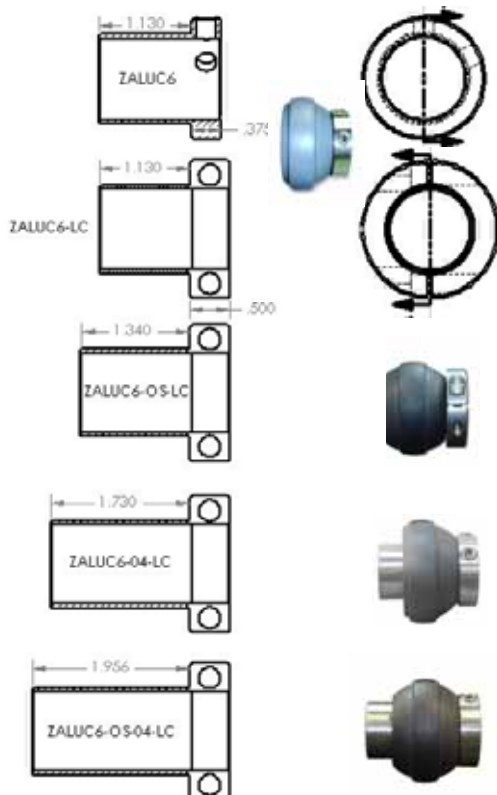
- Holds better under higher thrust loads
- Retains its position under temperature cycling

Recommended applications to choose DoubleLock™ locking sleeves

- Vertical shaft installation
- Ovens
- High load angled or vertical screw conveyor
- Freezers
- Other high thrust load drives

Comparison of standard locking sleeves and DoubleLock™ locking sleeves

In some sizes, DoubleLock™ sleeves have slightly wider collar than standard locking sleeves to accommodate hardware that is strong enough to draw the split flange together to properly secure around the shaft. For details on specific shaft sizes, refer to chart on page 3.



1" locking sleeve dimensional change

- body length remains the same
- ZALUC6-1 has 1-1/2" collar OD x .375 width, overall length at 1.53"
- ZALUC6-1-LC has 1-3/4" collar OD x .50 width, overall length at 1.63"

DoubleLock™ is available on all sizes/styles of locking sleeves

DoubleLock™ ZALUC6-LC sleeve mates with standard Poly-Round⁷

DoubleLock™ ZAMUC6-LC sleeve mates with narrow Poly-Round⁷

DoubleLock™ -OS-LC sleeve mates with Oven Style Poly-Round⁷
(-HTV fixed end)

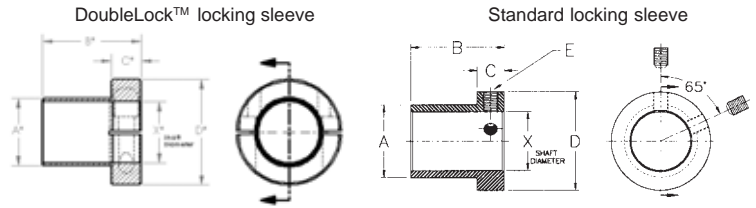
DoubleLock™ -04-LC sleeve mates with standard length Poly-Round⁷
(-HTE expansion end)

DoubleLock™ -OS-04-LC sleeve mates with Oven Style Poly-Round⁷
(-HTE expansion end)

Detailed Comparison of Dimensions of DoubleLock™ Locking and Standard Locking Sleeves

DoubleLock™ dimensions are larger than standard locking sleeves:

- B* overall length about .15" longer
- C* collar length about .15" longer
- D* collar OD about 1/4" larger



Double Lock Locking Sleeve P/N Group (Ring)	Wt. in lbs.	Standard Locking Sleeve P/N Group (Ring)	Wt. in lbs.	X= Shaft Size		DoubleLock™ Locking Sleeve					Standard Locking Sleeve			
				mm	in.	A	B*	C*	D*	2 ea ss SHCS E*	B	C	D	2 ea SS set screw E
ZALUA6-x-LC A (203)	.18	ZALUA6-x A (203)	.15	17	1/2 9/16 5/8 11/16	0.78 20.0	1.47 37	.53 13	1.49 38	1/4-28	1.31 32	0.38 9	1.13 28	1/4-28
ZALUB6-x-LC B (204)	.2	ZALUB6-x B (204)	.15	20	1/2 9/16 5/8 11/16 3/4 13/16	0.90 23.2	1.56 38	.53 13	1.63 40	1/4-28	1.44 35	0.38 9	1.25 31	1/4-28
ZALUC6-x-LC C (205)	.2	ZALUC6-x C (205)	.15	25	13/16 7/8 15/16 1	1.09 27.9	1.63 40	.53 13	1.75 43	1/4-28	1.50 37	0.38 9	1.5 37	1/4-28
ZALUD6-x-LC D (206)	.4	ZALUD6-x D (206)	.31	30	1 1-1/16 1-1/8 1-3/16 1-1/4	1.34 34.3	1.81 44	.53 13	2.0 49	1/4-28	1.79 44	0.48 12	1.75 43	3/8-24
ZALUE6-x-LC E (207)	.5	ZALUE6-x E (207)	.55	35	1-3/16 1-1/4 1-5/16 1-3/8 1-7/16	1.53 39.1	2.00 49	.53 13	2.25 55	1/4-28	2.0 49	0.50 12	2.0 49	3/8-24
ZALUF6-x-LC F (208)	.6	ZALUF6-x F (208)	.62	40	1-7/16 1-1/2 1-9/16 1-5/8	1.71 43.8	2.13 52	.53 13	2.38 58	1/4-28	2.19 54	0.56 14	2.25 55	3/8-24
ZALUG6-x-LC G (209)	.8	ZALUG6-x G (209)	.86	45	1-1/2 1-5/8 1-11/16 1-3/4	1.87 47.5	2.31 57	.65 16	2.75 67	5/16-24	2.25 55	0.56 14	2.5 61	3/8-24
ZALUH6-x-LC H (210)	1.1	ZALUH6-x H (210)	1.0	50	1-11/16 1-3/4 1-13/16 1-7/8 1-15/16 2	2.09 53.3	2.31 57	.65 16	3.0 74	5/16-24	2.25 55	0.56 14	2.69 66	3/8-24
ZALUI6-x-LC I (211)	1.3	ZALUI6-x I (211)	1.3	55	1-15/16 2 2-1/16 2-1/8 2-3/16 2-1/4	2.34 59.7	2.50 61	.65 16	3.25 80	5/16-24	2.44 60	0.56 14	2.88 71	3/8-24
ZALUJ6-x-LC J (212)	1.4	ZALUJ6-x J (212)	1.3	60	2-3/16 2-1/4 2-5/16 2-3/8 2-7/16	2.53 64.5	2.74 67	.65 16	3.4 83	5/16-24	2.68 66	0.56 14	3.25 80	3/8-24
ZALUK6-x-LC K (214)		ZALUK6-x K (214)	3.0	70	2-7/16 2-1/2 2-5/8 2-11/16 2-3/4	2.84 72.4	2.88 71	.78 19	3.8 93	3/8-24	2.88 71	0.75 18	4.0 98	1/2-20
ZALUL6-x-LC L (215)		ZALUL6-x L (215)	2.2	75	2-11/16 2-3/4 2-13/16 2-7/8 2-15/16	3.14 79.8	2.88 71	.78 19	4.13 101	3/8-24	2.88 71	0.75 18	4.0 98	1/2-20
ZALUM6-x-LC M (216)		ZALUM6-x M (216)	3.0	80	2-3/4 2-15/16 3 3-1/8 3-13/16	3.28 83.5	3.16 77	0.75 18	4.7 120	3/8-24	3.16 77	0.75 18	4.5 110	1/2-20

Introducing:
DoubleLock™ Locking Sleeves



Get twice the clamping force with DoubleLock™ Locking sleeves



Poly-Round7 Solution7



All-Round7 Solution7