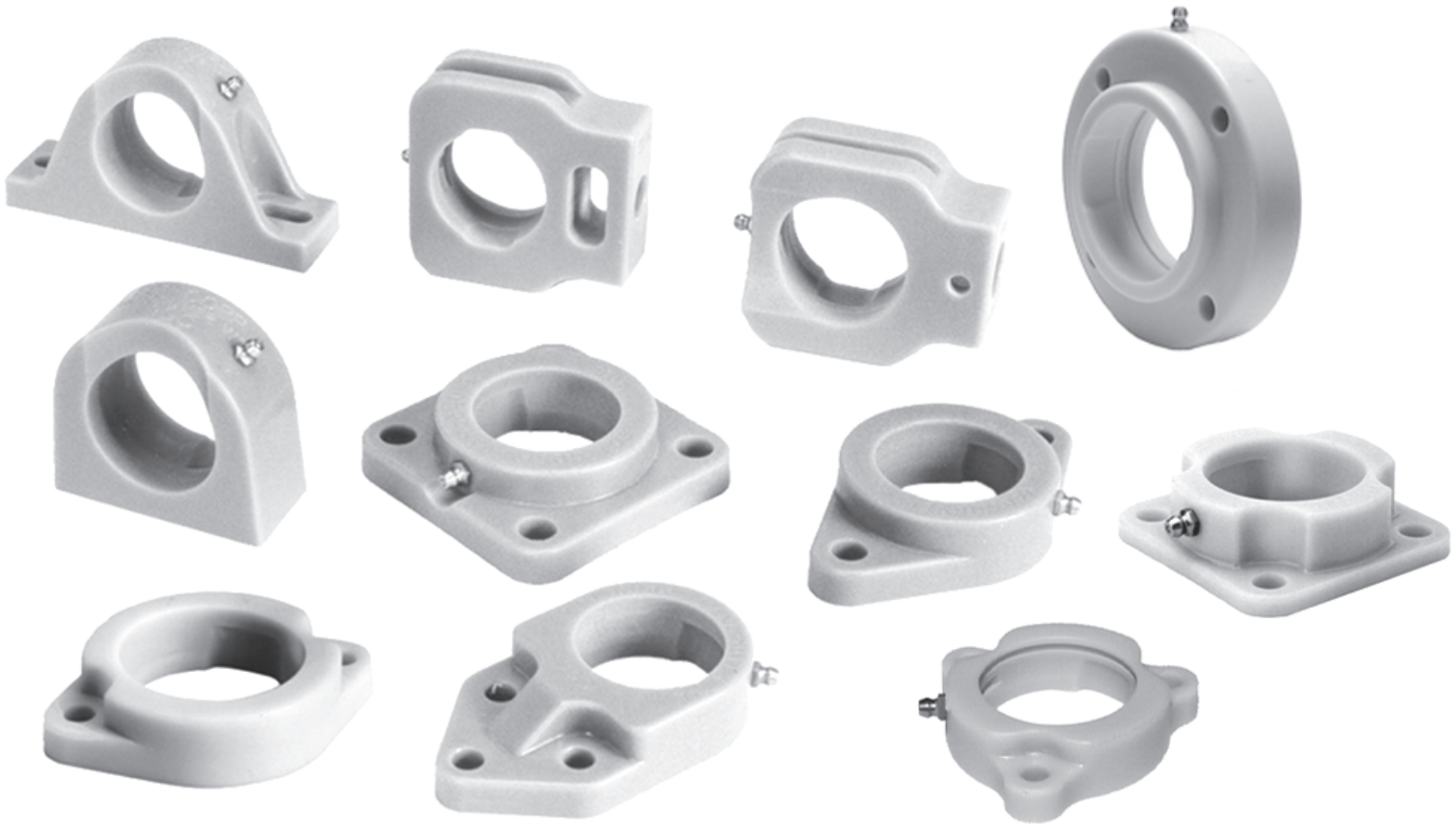




SOLUTION[®] POLYMER BEARING HOUSINGS



Polymer bearing housings for sanitary and corrosive environments

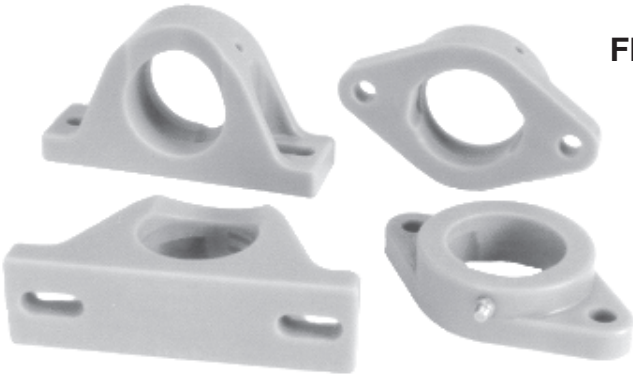
- Solid construction (no casting or injection-molding cavities)
- Neutral color (light gray)
- Abrasion resistant
- Ideal for **HACCP** programs
- Easy to clean, sanitary unit
- Includes stainless grease fitting or setscrew
- Bolt pattern interchanges with standard cast steel and stainless steel housings
- Accepts most conventional self-aligning inserts, EDT ALL-ROUND[®] bearings and EDT solid polymer inserts
- Available in all styles and sizes
- Strong and tough
- Non-magnetic

edtcorp.com
edtsales@edtcorp.com

EDT CORP
1006-J NE 146th Street
Vancouver, WA 98685

PHONE 360-574-7294
FAX 360-574-3834

Sanitary Non-Corrosive Polymer Housings



FEATURES AND BENEFITS:

- Completely solid construction.
- All mounting surfaces smooth and flat for **HACCP**.
- Sanitary and easy to clean.
- Every size. Every style.
- Neutral gray color compliments all equipment.

- All housings are stronger than installed bearings in the preferred mounting positions without any metal reinforcements.
- Permanent unit. Reusable many times. Very cost effective.
- Interchanges with all industry-standard self-aligning mounted bearings.
- Housings accommodate any self-aligning bearings:

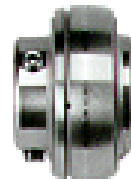
EDT All-Round® Supreme spherical bearings
(see Section F-RED and Section C-ORANGE).



EDT Poly-Round insert
(see Section H-WHITE and Section J-AMBER).



Ball Bearings by any manufacture
(for stainless ball bearings see Section K-Lt GREY)

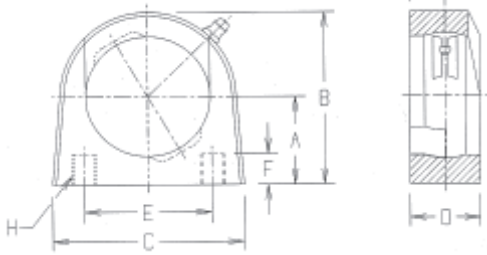


APPLICATIONS:

- Food processing
- Pharmaceutical
- Metal detection
- Pickling operations
- Marine
- Rendering
- Baking
- Chemical processing
- Paper manufacturing
- Fertilizer processing
- Replacement for all plated, coated or painted housings
- Wastewater and water treatment
- Pet food processing

EDT POLYMER TAPPED BASE PILLOW BLOCK HOUSINGS

SERIES 9G



Mounting pattern interchanges with:

Dodge	TB-SC
MB	TBC-25
Sealmaster	TB
Hub City	TPB50
MRC	CTB
AMI	TBL
Linkbelt	PT3



Load ratings for EDT polymer housings are limited only by the installed bearings.

P/N GROUP (RING)	Shaft Diameter		A	B	C	D	E	F	G	H	Wt. in lbs.
	mm	in.	in. mm	in. mm	in. mm	in. mm	in. mm	in. mm	in. mm	UNC. Threads	
9GA A (203) 1.575 40	17	1/2 9/16 5/8 11/16	1-5/16 33.3	2-1/2 63.5	3 76.2	1-5/16 33.3	2 50.8	1/2 12.7	21/32 16.7	3/8-16	.2
9GB B (204) 1.850 47	20	1/2 9/16 5/8 11/16 3/4 13/16	1-5/16 33.3	2-5/8 66.7	3 76.2	1-7/16 36.5	2 50.8	1/2 12.7	23/32 18.3	3/8-16	.25
9GC C (205) 2.047 52	25	13/16 7/8 15/16 1	1-7/16 36.5	2-15/16 74.6	3-1/4 82.5	1-7/16 36.5	2 50.8	1/2 12.7	23/32 18.3	3/8-16	.3
9GD D (206) 2.441 62	30	1 1-1/16 1-1/8 1-3/16 1-1/4	1-11/16 42.9	3-3/8 85.7	4-1/4 108.0	1-5/8 41.3	3 76.2	5/8 15.9	13/16 20.6	7/16-14	.4
9GE E (207) 2.835 72	35	1-3/16 1-1/4 1-5/16 1-3/8 1-7/16	1-7/8 47.6	3-7/8 98.4	4-1/2 114.3	1-3/4 44.5	3-1/4 82.6	3/4 19.1	7/8 22.2	1/2-13	.6
9GF F (208) 3.150 80	40	1-7/16 1-1/2 1-9/16 1-5/8	1-15/16 49.2	4-1/8 104.8	4-3/4 120.7	1-7/8 47.6	3-1/2 88.9	3/4 19.1	15/16 23.8	1/2-13	.7
9GG G (209) 3.346 85	45	1-1/2 1-5/8 1-11/16 1-3/4	2-1/8 54.0	4-3/8 111.1	5-1/4 133.4	2 50.8	3-3/4 95.3	3/4 19.1	1 25.4	1/2-13	.8
9GH H (210) 3.543 90	50	1-11/16 1-3/4 1-13/16 1-7/8 1-15/16 2	2-1/4 57.2	4-3/4 120.7	5-3/4 146.1	2-1/8 54.0	4 101.6	7/8 22.2	1-1/16 27.0	5/8-11	1.1
9GI I (211) 3.937 100	55	1-15/16 2 2-1/16 2-1/8 2-3/16 2-1/4	2-1/4 57.2	4-7/8 123.8	5-3/4 146.1	2-5/16 58.7	4 101.6	7/8 22.2	1-5/32 29.4	5/8-11	
9GJ J (212) 4.331 110	60	2-3/16 2-1/4 2-5/16 2-3/8 2-7/16	2-3/4 69.9	5-3/4 146.1	6-1/2 165.1	2-7/16 161.9	4-1/4 108.0	7/8 22.2	1-7/32 31.0	5/8-11	
9GK K (214) 4.921 125	70	2-7/16 2-1/2 2-5/8 2-11/16 2-3/4	3 76.2	6-3/8 161.9	7-1/2 190.5	2-1/2 63.5	5 127.0	1 25.4	1-1/4 31.8	3/4-10	
9GL L (215) 5.118 130	75	2-11/16 2-3/4 2-13/16 2-7/8 2-15/16 3	3-1/2 88.9	7 177.8	8 203.2	2-7/8 73.0	5-1/4 133.4	1-1/8 28.6	1-7/16 36.5	7/8-9	

For mounted assemblies, see Sections:
ORANGE, AMBER, and Lt GREY

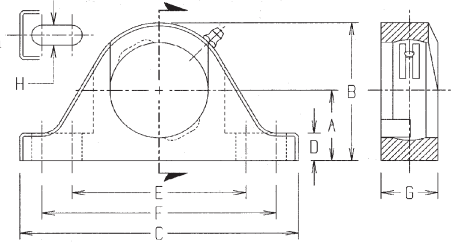
EDT POLYMER PILLOW BLOCK HOUSING - LOW BACKING HEIGHT

SERIES 10G



With few exceptions, EDT series 10G mounting pattern interchanges with:

Dodge	P2B- SCB, SXB
Fafnir	RAK, VAK
Sealmaster	NPL
MB	CL-25
Hub City	PB220, PB250

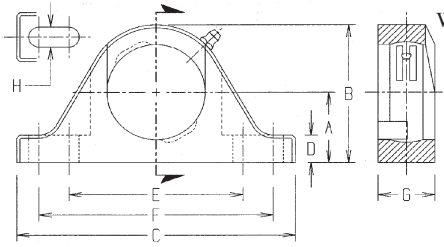


Load ratings for EDT polymer housings are limited only by the installed bearings.

P/N GROUP (RING)	Shaft Diameter		A	B	C	D	E	F	G	H	Bolt Size	Wt. in lbs.
	mm	in.	in. mm	in. mm	in. mm	in. mm	in. mm	in. mm	in. mm	in. mm		
10GA A (203) 1.575 40	17	1/2 9/16 5/8 11/16	---	---	---	---	---	---	---	---		
10GB B (204) 1.850 47	20	1/2 9/16 5/8 11/16 3/4 13/16	1-1/4 31.8	2-5/8 66.7	5-1/4 133.4	7/16 11.1	3-1/4 82.5	4-3/8 111.1	1-3/8 34.9	13/32 10.3	3/8	.3
10GC C (205) 2.047 52	25	13/16 7/8 15/16 1	1-5/16 33.3	2-13/16 71.4	5-1/2 139.7	7/16 11.1	3-7/16 87.3	4-5/8 117.5	1-1/2 38.1	13/32 10.3	3/8	.4
10GD D (206) 2.441 62	30	1 1-1/16 1-1/8 1-3/16 1-1/4	1-9/16 39.7	3-5/16 84.1	6-1/4 158.7	1/2 12.7	4-1/8 104.8	5-1/8 130.2	1-3/4 44.5	17/32 13.5	1/2	.5
10GE E (207) 2.835 72	35	1-3/16 1-1/4 1-5/16 1-3/8 1-7/16	1-13/16 46.0	3-3/4 95.3	6-9/16 166.7	9/16 14.3	4-11/16 119.1	5-7/16 138.1	1-3/4 44.5	17/23 13.5	1/2	.7
10GF F (208) 3.150 80	40	1-7/16 1-1/2 1-9/16 1-5/8	1-15/16 49.2	4-1/16 103.2	7-1/4 184.2	9/16 14.3	5 127.0	6-1/8 155.6	1-15/16 49.2	17/32 13.5	1/2	.8
10GG G (209) 3.346 85	45	1-1/2 1-5/8 1-11/16 1-3/4	2-1/16 52.4	4-1/4 108.0	7-7/16 188.9	9/16 14.3	5-5/16 134.9	6-5/16 160.3	2 50.8	17/32 13.5	1/2	.9
10GH H (210) 3.543 90	50	1-11/16 1-3/4 1-13/16 1-7/8 1-15/16 2	2-3/16 55.6	4-9/16 115.9	8-1/8 206.4	11/16 17.5	5-7/8 149.2	6-3/4 171.5	2-1/4 57.2	21/32 16.7	5/8	1.3
10GI I (211) 3.937 100	55	1-15/16 2 2-1/16 2-1/8 2-3/16 2-1/4	2-7/16 61.9	5-1/16 128.6	8-7/8 225.4	11/16 17.5	6-3/8 161.9	7-1/2 190.5	2-3/8 60.3	21/32 16.7	5/8	1.5
10GJ J (212) 4.331 110	60	2-3/16 2-1/4 2-5/16 2-3/8 2-7/16	2-11/16 68.3	5-9/16 141.3	9-1/2 241.3	11/16 17.5	6-7/16 163.5	8-1/8 206.4	2-1/2 63.5	21/32 16.7	5/8	1.6
10GK K (214) 4.921 125	70	2-7/16 2-1/2 2-5/8 2-11/16 2-3/4	3-1/8 79.4	6-5/16 160.3	10-3/4 273.1	15/16 23.8	7-7/16 188.9	9-1/8 231.8	2-3/4 69.9	25/32 19.1	3/4	2.4
10GL L (215) 5.118 130	75	2-11/16 2-3/4 2-13/16 2-7/8 2-15/16 3	3-1/4 82.5	6-9/16 166.7	11-3/4 298.5	3/4 19.1	8-1/4 209.6	9-7/8 250.8	2-7/8 73.0	25/32 19.8	3/4	3.2

For mounted assemblies, see Sections:
ORANGE, AMBER, and Lt GREY

EDT POLYMER PILLOW BLOCK HOUSING - STANDARD BACKING HEIGHT SERIES 1G



With few exceptions, EDT series 1G mounting pattern interchanges with:

Dodge	P2B-SC, SCM
Fafnir	RAS, RASC
MB	C-25, C-35
Sealmaster	NP
MRC	CPB
Hub City	PB221, PB251
AMI	PPL



Load ratings for EDT polymer housings are limited only by the installed bearings.

P/N GROUP (RING)	Shaft Diameter		A	B	C	D	E	F	G	H	Bolt Size	Wt. in lbs.
	mm	in.	in. mm	in. mm	in. mm	in. mm	in. mm	in. mm	in. mm	in. mm		
1GA A (203) 1.575 40	17	1/2 9/16 5/8 11/16	1-1/16 27.0	2-1/4 57.2	5 127.0	7/16 11.1	2-15/16 74.6	4-1/16 103.2	1-1/4 31.8	13/32 10.3	3/8	.2
1GB B (204) 1.850 47	20	1/2 9/16 5/8 11/16 3/4 13/16	1-5/16 33.3	2-11/16 68.3	5-1/4 133.4	1/2 12.7	3-1/4 82.6	4-3/8 111.1	1-3/8 34.9	13/32 10.3	3/8	.3
1GC C (205) 2.047 52	25	13/16 7/8 15/16 1	1-7/16 36.5	2-15/16 74.6	5-1/2 139.7	9/16 14.3	3-7/16 87.3	4-5/8 117.5	1-1/2 38.1	17/32 13.5	3/8	.4
1GD D (206) 2.441 62	30	1 1-1/16 1-1/8 1-3/16 1-1/4	1-11/16 42.9	3-3/8 85.7	6-1/4 158.7	11/16 17.5	4-1/8 104.8	5-1/8 130.2	1-3/4 44.5	17/32 13.5	1/2	.5
1GE E (207) 2.835 72	35	1-3/16 1-1/4 1-5/16 1-3/8 1-7/16	1-7/8 47.6	3-7/8 98.4	6-9/16 166.7	11/16 17.5	4-11/16 119.1	5-7/16 138.1	1-3/4 44.5	17/32 13.5	1/2	.7
1GF F (208) 3.150 80	40	1-7/16 1-1/2 1-9/16 1-5/8	2-1/8 54.0	4-5/16 109.5	7-1/4 184.2	3/4 19.1	5 127.0	6-1/8 155.6	1-15/16 49.2	17/32 13.5	1/2	.8
1GG G (209) 3.346 85	45	1-1/2 1-5/8 1-11/16 1-3/4	2-1/8 54.0	4-3/8 111.1	7-7/16 188.9	3/4 19.1	5-5/16 134.9	6-5/16 160.3	2 50.8	17/32 13.5	1/2	.9
1GH H (210) 3.543 90	50	1-11/16 1-3/4 1-13/16 1-7/8 1-15/16 2	2-1/4 57.2	4-5/8 117.5	8-1/8 206.4	3/4 19.1	5-7/8 149.2	6-3/4 171.5	2-1/4 57.2	21/32 16.7	5/8	1.4
1GI I (211) 3.937 100	55	1-15/16 2 2-1/16 2-1/8 2-3/16 2-1/4	2-1/2 63.5	5-1/8 130.2	8-7/8 225.4	7/8 22.2	6-3/8 161.9	7-1/2 190.5	2-3/8 60.3	21/32 16.7	5/8	1.5
1GJ J (212) 4.331 110	60	2-3/16 2-1/4 2-5/16 2-3/8 2-7/16	2-3/4 69.9	5-1/2 139.7	9-1/2 241.3	7/8 22.2	6-7/16 163.5	8-1/8 206.4	2-1/2 63.5	21/32 16.7	5/8	1.8
1GK K (214) 4.921 125	70	2-7/16 2-1/2 2-5/8 2-11/16 2-3/4	3 76.2	6-1/4 158.7	10-3/4 273.1	15/16 23.8	7-7/16 188.9	9-1/8 231.8	2-3/4 69.9	25/32 19.8	3/4	2.4
1GL L (215) 5.118 130	75	2-11/16 2-3/4 2-13/16 2-7/8 2-15/16 3	3-1/2 88.9	6-7/8 174.6	11-3/4 298.5	1 25.4	8-1/4 209.6	9-3/4 247.7	2-7/8 73.0	29/32 23.0	7/8	3.2

For mounted assemblies, see Sections:
ORANGE, AMBER, and Lt GREY

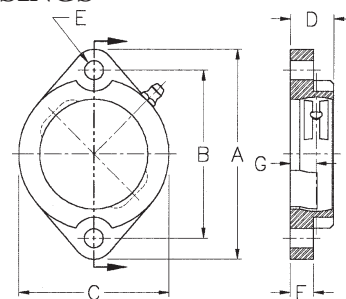
EDT POLYMER TWO BOLT FLANGED HOUSINGS

SERIES 6G



Mounting pattern interchanges with:

Dodge	LFT-SC
Fafnir	RAT
MB	FBS2-25
Hub City	FB160
Linkbelt	FX



Load ratings for EDT polymer housings are limited only by the installed bearings.

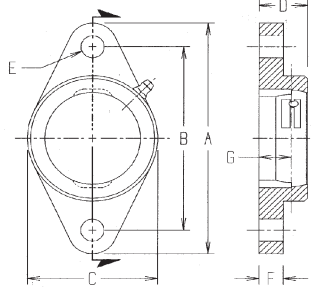
P/N GROUP (RING)	Shaft Diameter		A	B	C	D	E	F	G	Bolt Size	Wt. in lbs.
	mm	in.	in. mm	in. mm	in. mm	in. mm	in. mm	in. mm	in. mm		
6GA A (203) 1.575 40	17	1/2	3-3/16	2-1/2	2-3/32	11/16	9/32	3/8	27/64	1/4	.06
		9/16 5/8 11/16	81.0	63.5	53.2	17.5	7.1	9.5	10.7		
6GB B (204) 1.850 47	20	1/2	3-9/16	2-13/16	2-13/32	7/8	11/32	27/64	1/2	5/16	.08
		9/16 5/8 11/16 3/4 13/16	90.5	71.4	61.4	22.2	8.7	10.7	12.7		
6GC C (205) 2.047 52	25	13/16	3-3/4	3	2-23/32	13/16	11/32	27/64	1/2	5/16	.13
		7/8 15/16 1	95.2	76.2	69.1	20.6	8.7	10.7	12.7		
6GD D (206) 2.441 62	30	1	4-7/16	3-9/16	3-3/32	31/32	13/32	15/32	9/16	3/8	.15
		1-1/16 1-1/8 1-3/16 1-1/4	112.7	90.5	78.6	24.6	10.3	11.9	14.3		
6GE E (207) 2.835 72	35	1-3/16	4-15/16	3-15/16	3-1/2	31/32	13/32	1/2	9/16	3/8	.16
		1-1/4 1-5/16 1-3/8 1-7/16	125.4	100.0	88.9	10.3	10.3	12.7	14.3		

Round bolt holes are standard.
Square bolt holes are available - if required, please call for price and lead time.

For mounted assemblies, see Sections:
ORANGE, AMBER, and Lt GREY

EDT POLYMER TWO BOLT FLANGED HOUSINGS

SERIES 2G



Mounting pattern interchanges with:

Dodge	F2B-SC, SCM, VSC
Fafnir	RCJT
Sealmaster	SFT, HFT, HT, HFC, HEC
MRC	C2F
MB	FC2-25, FC2-35
Hub City	FB230, FB260
AMI	NFL



Load ratings for EDT polymer housings are limited only by the installed bearings.

P/N GROUP (RING)	Shaft Diameter		A	B	C	D	E	F	G	Bolt Size	Wt. in lbs.
	mm	in.	in. mm	in. mm	in. mm	in. mm	in. mm	in. mm	in. mm		
2GA A (203) 1.575 40	17	1/2 9/16 5/8 11/16	3-7/8 98.4	3 76.2	2-5/32 54.8	27/32 21.4	13/32 10.3	7/16 11.1	37/64 14.7	3/8	.1
2GB B (204) 1.850 47	20	1/2 9/16 5/8 11/16 3/4 13/16	4-13/32 111.9	3-17/32 89.7	2-11/16 68.3	15/16 23.8	13/32 10.3	7/16 11.1	19/32 15.1	3/8	.2
2GC C (205) 2.047 52	25	13/16 7/8 15/16 1	4-57/64 124.2	3-57/64 98.8	2-15/16 74.6	1 25.4	15/32 11.9	1/2 12.7	21/32 16.7	7/16	.2
2GD D (206) 2.441 62	30	1 1-1/16 1-1/8 1-3/16 1-1/4	5-19/32 142.1	4-19/32 116.7	3-5/8 92.1	1-1/16 27.0	15/32 11.9	1/2 12.7	43/64 17.1	7/16	.3
2GE E (207) 2.835 72	35	1-3/16 1-1/4 1-5/16 1-3/8 1-7/16	6-1/8 155.6	5-1/8 130.2	4 101.6	1-7/32 31.0	17/32 13.5	9/16 14.3	53/64 21.0	1/2	.4
2GF F (208) 3.150 80	40	1-7/16 1-1/2 1-9/16 1-5/8	6-25/32 172.2	5-21/32 143.7	4-9/16 115.9	1-1/4 31.8	17/32 13.5	9/16 14.3	27/32 21.4	1/2	.6
2GG G (209) 3.346 85	45	1-1/2 1-5/8 1-11/16 1-3/4	6-31/32 177.0	5-27/32 148.4	4-3/4 120.7	1-1/4 31.8	17/32 13.5	5/8 15.9	27/32 21.4	1/2	.6
2GH H (210) 3.543 90	50	1-11/16 1-3/4 1-13/16 1-7/8 1-15/16 2	7-5/16 185.7	6-3/16 157.2	5-1/16 128.6	1-1/4 31.8	17/32 13.5	5/8 15.9	27/32 21.4	1/2	.7
2GI I (211) 3.937 100	55	1-15/16 2 2-1/16 2-1/8 2-3/16 2-1/4	8-5/8 219.1	7-1/4 184.2	5-7/8 149.2	1-15/32 37.3	21/32 16.7	11/16 17.5	31/32 21.4	5/8	1.1
2GJ J (212) 4.331 110	60	2-3/16 2-1/4 2-5/16 2-3/8 2-7/16	9-21/64 236.9	7-61/64 202.0	6-9/16 161.9	1-21/32 42.1	21/32 16.7	11/16 17.5	1-7/64 28.2	5/8	1.6
2GK K (214) 4.921 125	70	2-7/16 2-1/2 2-5/8 2-11/16 2-3/4	9-11/16 246.1	8-5/16 211.1	6-15/16 176.2	1-7/8 47.6	21/32 16.7	3/4 19.1	1-9/32 32.5	5/8	
2GL L (215) 5.118 130	75	2-11/16 2-3/4 2-13/16 2-7/8 2-15/16 3	10-1/8 257.2	8-1/2 215.9	6-15/16 176.2	2 50.8	25/32 19.8	1 25.4	1-13/32 35.7	3/4	1.8

For mounted assemblies, see Sections:
ORANGE, AMBER, and Lt GREY

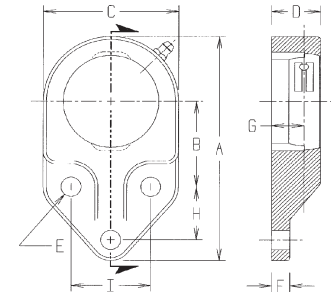
EDT POLYMER THREE BOLT EXTENSION FLANGED HOUSING

SERIES 3G



Mounting pattern interchanges with:

Dodge	FB-SC
Sealmaster	FB
MB	MFB
Linkbelt	FB3-U200N
MRC	C3F



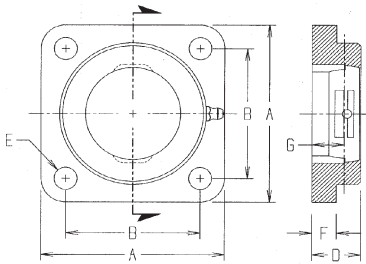
Load ratings for EDT polymer housings are limited only by the installed bearings.

P/N GROUP (RING)	Shaft Diameter		A	B	C	D	E	F	G	H	I	Bolt Size	Wt. in lbs.
	mm	in.	in. mm	in. mm	in. mm	in. mm	in. mm	in. mm	in. mm	in. mm	in. mm		
3GA A (203) 1.575 40	17	1/2 9/16 5/8 11/16	3-21/32 92.9	1-3/8 34.9	2-3/16 55.5	27/32 21.4	11/32 8.7	7/16 11.1	37/64 14.7	13/16 20.6	1-1/4 31.8	5/16	.1
3GB B (204) 1.850 47	20	1/2 9/16 5/8 11/16 3/4 13/16	4-11/32 110.3	1-11/16 42.9	2-9/16 65.1	15/16 23.8	13/32 10.3	7/16 11.1	19/32 15.1	7/8 22.2	1-1/2 38.1	3/8	.2
3GC C (205) 2.047 52	25	13/16 7/8 15/16 1	4-3/4 120.7	1-13/16 46.0	2-3/4 69.9	1 25.4	13/32 10.3	1/2 12.7	21/32 16.7	1-1/8 28.6	1-5/8 41.3	3/8	.3
3GD D (206) 2.441 62	30	1 1-1/16 1-1/8 1-3/16 1-1/4	5-7/16 138.1	2-1/16 52.4	3-1/4 82.6	1-1/16 27.0	13/32 10.3	1/2 12.7	43/64 17.1	1-1/4 31.8	1-7/8 47.6	3/8	.4
3GE E (207) 2.835 72	35	1-3/16 1-1/4 1-5/16 1-3/8 1-7/16	6-3/16 157.2	2-3/8 60.3	3-13/16 96.8	1-7/32 31.0	17/32 13.5	9/16 14.3	53/64 21.0	1-1/4 31.8	2 50.8	1/2	.5
3GF F (208) 3.150 80	40	1-7/16 1-1/2 1-9/16 1-5/8	6-11/16 169.9	2-9/16 65.1	4-1/4 108.0	1-1/4 31.8	17/32 13.5	9/16 14.3	27/32 21.4	1-3/8 34.9	2-1/4 57.2	1/2	.6
3GG G (209) 3.346 85	45	1-1/2 1-5/8 1-11/16 1-3/4	7-3/16 182.6	2-3/4 69.9	4-9/16 115.9	1-1/4 31.8	17/32 13.5	5/8 15.9	27/32 21.4	1-1/2 38.1	2-1/2 63.5	1/2	
3GH H (210) 3.543 90	50	1-11/16 1-3/4 1-13/16 1-7/8 1-15/16 2	7-5/8 193.7	2-15/16 74.6	4-7/8 123.8	1-1/4 31.8	17/32 13.5	5/8 15.9	27/32 21.4	1-5/8 41.3	2-3/4 69.9	1/2	.8
3GI I (211) 3.937 100	55	1-15/16 2 2-1/16 2-1/8 2-3/16 2-1/4	8-3/8 212.7	3-1/8 79.4	5-3/8 136.5	1-15/32 37.3	21/32 16.7	11/16 17.5	31/32 24.6	1-3/4 44.5	3 76.2	5/8	1.1
3GJ J (212) 4.331 110	60	2-3/16 2-1/4 2-5/16 2-3/8 2-7/16	9-3/16 233.4	3-3/8 85.7	6 152.4	1-21/32 42.1	21/32 16.7	11/16 17.5	1-7/64 28.2	2 50.8	3-1/2 88.9	5/8	1.8
3GK K (214) 4.921 125	70	2-7/16 2-1/2 2-5/8 2-11/16 2-3/4	10-3/8 263.5	3-3/4 95.3	6-7/8 174.6	1-7/8 47.6	21/32 16.7	3/4 19.1	1-9/32 32.5	2-3/8 60.3	4-1/4 108.0	5/8	
3GL L (215) 5.118 130	75	2-11/16 2-3/4 2-13/16 2-7/8 2-15/16 3	11-1/8 282.6	4 101.6	7-1/8 181.0	2 50.8	25/32 19.8	1 25.4	1-13/32 35.7	2-5/8 66.7	4-1/4 108.0	3/4	

For mounted assemblies, see Sections:
ORANGE, AMBER, and Lt GREY

EDT POLYMER FOUR BOLT FLANGED HOUSINGS

SERIES 4G



Mounting pattern interchanges with:

Dodge	F4B-SC, SCM, VSC
Fafnir	RCJ
Sealmaster	SF
MRC	C4F
MB	FC4-25, FC4-35
AMI	FPL
Linkbelt	F3, KF, KLF



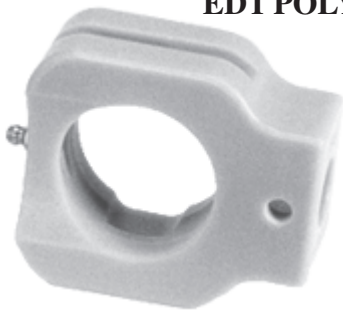
Load ratings for EDT polymer housings are limited only by the installed bearings.

P/N GROUP (RING)	Shaft Diameter		A	B	C	D	E	F	G	Bolt Size	Wt. in lbs.
	mm	in.	in. mm	in. mm	in. mm	in. mm	in. mm	in. mm	in. mm		
4GA A (203) 1.575 40	17	1/2 9/16 5/8 11/16	3 76.2	2-1/8 54.0	---	27/32 21.4	13/32 10.3	7/16 11.1	37/64 14.7	3/8	.2
4GB B (204) 1.850 47	20	1/2 9/16 5/8 11/16 3/4 13/16	3-3/8 85.7	2-1/2 63.5	---	15/16 23.8	13/32 10.3	7/16 11.1	19/32 15.1	3/8	.3
4GC C (205) 2.047 52	25	13/16 7/8 15/16 1	3-3/4 95.3	2-3/4 69.9	---	1 25.4	15/32 11.9	1/2 12.7	21/32 16.7	7/16	.4
4GD D (206) 2.441 62	30	1 1-1/16 1-1/8 1-3/16 1-1/4	4-1/4 108.0	3-1/4 82.6	---	1-1/16 27.0	15/32 11.9	1/2 12.7	43/64 17.1	7/16	.5
4GE E (207) 2.835 72	35	1-3/16 1-1/4 1-5/16 1-3/8 1-7/16	4-3/4 120.7	3-5/8 92.1	---	1-7/32 31.0	17/32 13.5	9/16 14.3	53/64 21.0	1/2	.6
4GF F (208) 3.150 80	40	1-7/16 1-1/2 1-9/16 1-5/8	5-1/8 130.2	4 101.6	---	1-1/4 31.8	17/32 13.5	9/16 14.3	27/32 21.4	1/2	.6
4GG G (209) 3.346 85	45	1-1/2 1-5/8 1-11/16 1-3/4	5-1/4 133.4	4-1/8 104.8	---	1-1/4 31.8	17/32 13.5	5/8 15.9	27/32 21.4	1/2	.8
4GH H (210) 3.543 90	50	1-11/16 1-3/4 1-13/16 1-7/8 1-15/16 2	5-1/2 139.7	4-3/8 111.1	---	1-1/4 31.8	17/32 13.5	5/8 15.9	27/32 21.4	1/2	.9
4GI I (211) 3.937 100	55	1-15/16 2 2-1/16 2-1/8 2-3/16 2-1/4	6-1/2 165.1	5-1/8 130.2	---	1-15/32 37.3	21/32 16.7	11/16 17.5	31/32 21.4	5/8	1.5
4GJ J (212) 4.331 110	60	2-3/16 2-1/4 2-5/16 2-3/8 2-7/16	7 177.8	5-5/8 142.9	---	1-21/32 42.1	21/32 16.7	11/16 17.5	1-7/64 28.2	5/8	2.0
4GK K (214) 4.921 125	70	2-7/16 2-1/2 2-5/8 2-11/16 2-3/4	7-1/4 184.2	5-7/8 149.2	---	1-7/8 47.6	21/32 16.7	3/4 19.1	1-9/32 32.5	5/8	2.1
4GL L (215) 5.118 130	75	2-11/16 2-3/4 2-13/16 2-7/8 2-15/16 3	7-5/8 193.7	6 152.4	---	2 50.8	25/32 19.8	1 25.4	1-13/32 35.7	3/4	2.6

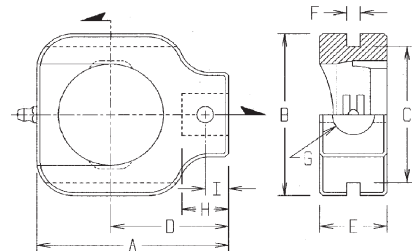
For mounted assemblies, see Sections:
ORANGE, AMBER, and Lt GREY

EDT POLYMER NARROW SLOT TAKE-UP HOUSING

SERIES 5G



Mounting pattern interchanges with:
 Dodge NSTU-SC, SCM, VSC
 Hub City TU



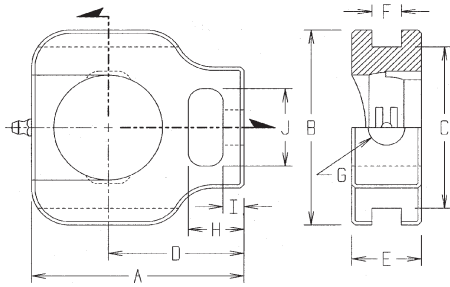
Load ratings for EDT polymer housings are limited only by the installed bearings.

P/N GROUP (RING)	Shaft Diameter		A	B	C	D	E	F	G	H	I	J	Wt. in lbs.
	mm	in.	in. mm	in. mm	in. mm	in. mm	in. mm	in. mm	in. mm	in. mm	in. mm	Pin. Dia.	
5GA A (203) 1.575 40	17	1/2 9/16 5/8 11/16	2-11/16 68.3	2-1/2 63.5	2 50.8	1-11/16 42.9	1 25.4	1/4 6.4	17/32 13.5	5/8 15.9	5/16 7.9	1/4	
5GB B (204) 1.850 47	20	1/2 9/16 5/8 11/16 3/4 13/16	3-7/16 87.3	3-1/8 79.4	2-5/8 66.7	2-3/16 55.5	1-3/8 34.9	1/4 6.4	25/32 19.8	7/8 22.2	7/16 11.1	5/16	.4
5GC C (205) 2.047 52	25	13/16 7/8 15/16 1	3-9/16 90.5	3-1/8 79.4	2-5/8 66.7	2-3/16 55.5	1-3/8 34.9	1/4 6.4	25/32 19.8	7/8 22.2	7/16 11.1	5/16	.3
5GD D (206) 2.441 62	30	1 1-1/16 1-1/8 1-3/16 1-1/4	4-5/16 109.5	4-1/8 104.8	3-1/2 88.9	2-11/16 68.3	1-3/8 34.9	1/4 6.4	25/32 19.8	1 25.4	1/2 12.7	5/16	.5
5GE E (207) 2.835 72	35	1-3/16 1-1/4 1-5/16 1-3/8 1-7/16	4-1/2 114.3	4-1/8 104.8	3-1/2 88.9	2-11/16 68.3	1-3/8 34.9	1/4 6.4	25/32 19.8	1 25.4	1/2 12.7	5/16	.6
5GF F (208) 3.150 80	40	1-7/16 1-1/2 1-9/16 1-5/8	5-3/8 136.5	4-3/4 120.7	4 101.6	3-1/4 82.6	1-5/8 41.3	5/16 7.9	29/32 23.0	1-5/32 29.4	21/32 16.7	3/8	1
5GG G (209) 3.346 85	45	1-1/2 1-5/8 1-11/16 1-3/4	5-7/16 138.1	4-3/4 120.7	4 101.6	3-1/4 82.6	1-5/8 41.3	5/16 7.9	29/32 23.0	1-5/32 29.4	21/32 16.7	3/8	1
5GH H (210) 3.543 90	50	1-11/16 1-3/4 1-13/16 1-7/8 1-15/16 2	5-1/2 139.7	4-3/4 120.7	4 101.6	3-1/4 82.6	1-5/8 41.3	5/16 7.9	29/32 23.0	1-5/32 29.4	21/32 16.7	3/8	1
5GI I (211) 3.937 100	55	1-15/16 2 2-1/16 2-1/8 2-3/16 2-1/4	6-1/8 155.6	5-3/8 136.5	4-7/16 112.7	3-5/8 92.1	1-3/4 44.5	5/16 7.9	1-1/32 26.2	1-9/32 32.5	11/16 17.5	7/16	
5GJ J (212) 4.331 110	60	2-3/16 2-1/4 2-5/16 2-3/8 2-7/16	6-11/16 169.9	5-3/4 146.1	4-15/16 125.4	3-7/8 98.4	1-3/4 44.5	5/16 7.9	1-1/32 26.2	1-9/32 32.5	11/16 17.5	7/16	
5GK K (214) 4.921 125	70	2-7/16 2-1/2 2-5/8 2-11/16 2-3/4	7-3/8 187.3	6-3/8 161.9	5-1/2 139.7	4-5/16 109.5	2 50.8	3/8 9.5	1-9/32 32.5	1-1/2 38.1	3/4 19.1	1/2	1.8
5GL L (215) 5.118 130	75	2-11/16 2-3/4 2-13/16 2-7/8 2-15/16 3	7-11/16 195.3	6-3/4 171.5	5-7/8 149.2	4-7/16 112.7	2 50.8	3/8 9.5	1-9/32 32.5	1-1/2 38.1	3/4 19.1	1/2	2.2

For mounted assemblies, see Sections:
ORANGE, AMBER, and Lt GREY

EDT POLYMER WIDE SLOT TAKE-UP HOUSINGS

SERIES 7G



Mounting pattern interchanges with:
 Dodge WSTU-SC, SCM, VSC
 Fafnir RTU
 Sealmaster ST
 AMI TPL
 Hub City WSTU220, 250



Load ratings for EDT polymer housings are limited only by the installed bearings.

P/N GROUP (RING)	Shaft Diameter		A	B	C	D	E	F	G	H	I	J	Wt. in lbs.
	mm	in.	in. mm	in. mm	in. mm	in. mm	in. mm	in. mm	in. mm	in. mm	in. mm	in. mm	
7GA A (203) 1.575 40	17	1/2 9/16 5/8 11/16	3-1/8 79.4	3 76.2	2-1/2 63.5	2 50.8	1-1/8 28.6	13/32 10.3	17/32 13.5	7/8 22.2	3/8 9.5	1-1/4 31.8	
7GB B (204) 1.850 47	20	1/2 9/16 5/8 11/16 3/4 13/16	3-11/16 93.7	3-5/8 92.1	3 76.2	2-3/8 60.3	1-3/8 34.9	17/32 13.5	21/32 16.7	1-1/16 27.0	7/16 11.1	1-7/16 36.5	.5
7GC C (205) 2.047 52	25	13/16 7/8 15/16 1	3-13/16 96.8	3-5/8 92.1	3 76.2	2-7/16 61.9	1-3/8 34.9	17/32 13.5	21/32 16.7	1-1/16 27.0	7/16 11.1	1-7/16 36.5	.5
7GD D (206) 2.441 62	30	1 1-1/16 1-1/8 1-3/16 1-1/4	4-3/8 111.1	4-1/8 104.8	3-1/2 88.9	2-3/4 69.9	1-5/8 41.3	17/32 13.5	25/32 19.8	1-5/32 29.4	3/8 9.5	1-5/8 41.3	.8
7GE E (207) 2.835 72	35	1-3/16 1-1/4 1-5/16 1-3/8 1-7/16	4-13/16 122.2	4-1/8 104.8	3-1/2 88.9	3 76.2	1-5/8 41.3	17/32 13.5	25/32 19.8	1-5/32 29.4	3/8 9.5	1-5/8 41.3	.7
7GF F (208) 3.150 80	40	1-7/16 1-1/2 1-9/16 1-5/8	5-1/2 139.7	4-1/2 114.3	4 101.6	3-7/16 87.3	1-15/16 49.2	11/16 17.5	1-1/16 27.0	1-1/2 38.1	9/16 14.3	1-15/16 49.2	1.1
7GG G (209) 3.346 85	45	1-1/2 1-5/8 1-11/16 1-3/4	5-11/16 144.5	4-5/8 117.5	4 101.6	3-1/2 88.9	1-15/16 49.2	11/16 17.5	1-1/16 27.0	1-1/2 38.1	9/16 14.3	1-15/16 49.2	1.2
7GH H (210) 3.543 90	50	1-11/16 1-3/4 1-13/16 1-7/8 1-15/16 2	5-13/16 147.6	4-3/4 120.7	4 101.6	3-9/16 90.5	1-15/16 49.2	11/16 17.5	1-1/16 27.0	1-1/2 38.1	9/16 14.3	1-15/16 49.2	1.1
7GI I (211) 3.937 100	55	1-15/16 2 2-1/16 2-1/8 2-3/16 2-1/4	7-1/2 190.5	5-7/8 149.2	5-1/8 130.2	4-11/16 119.1	2-1/2 63.5	1-1/16 27.0	1-5/16 33.3	1-31/32 50.0	23/32 18.3	2-1/2 63.5	2.6
7GJ J (212) 4.331 110	60	2-3/16 2-1/4 2-5/16 2-3/8 2-7/16	7-1/2 190.5	5-7/8 149.2	5-1/8 130.2	4-11/16 119.1	2-1/2 63.5	1-1/16 27.0	1-5/16 33.3	1-31/32 50.0	23/32 18.3	2-1/2 63.5	2.4
7GK K (214) 4.921 125	70	2-7/16 2-1/2 2-5/8 2-11/16 2-3/4	8-7/8 225.4	6-11/16 169.9	5-15/16 150.8	5-3/8 136.5	2-3/4 69.9	1-1/16 27.0	1-9/16 39.7	2-5/16 58.7	13/16 20.6	2-7/8 73.0	
7GL L (215) 5.118 130	75	2-11/16 2-3/4 2-13/16 2-7/8 2-15/16 3	9-1/8 231.8	6-11/16 169.9	5-15/16 150.8	5-1/2 139.7	2-3/4 69.9	1-1/16 27.0	1-9/16 39.7	2-5/16 58.7	13/16 20.6	2-7/8 73.0	3.6

For mounted assemblies, see Sections:
ORANGE, AMBER, and Lt GREY

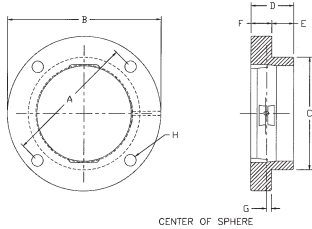
ENGINEERING NOTES

PILOTED FLANGE SOLUTION® POLYMER HOUSING

SERIES 24G

Mounting pattern interchanges with:

MB	PFC4-25, PFC4-35
Hub City	FC350
Dodge	FC-SC♦, FC-SCM
Sealmaster	SFC, MFC
Fafnir	RFC



Load ratings for EDT Polymer Housings are limited only by the installed bearings.

♦ in 209 ring size select housing 24GG/DSC

P/N GROUP (RING)	Shaft Diameter in.	A	B	C	D	E	F	G	H	Bolt Size in.	Wt. in lbs.
		in. mm	in. mm	in. mm	in. mm	in. mm	in. mm	in. mm	in. mm		
24GC C (205) 2.047 52	25 13/16 7/8 15/16 1	3-5/8 92.1	4-3/8 111.1	3 76.2	1-3/16 30.1	3/8 9.5	7/8 22.2	11/32 8.7	13/32 10.3	3/8	.6
24GD D (206) 2.441 62	30 1 1-1/16 1-1/8 1-3/16 1-1/4	3-5/8 92.1	4-3/8 111.1	3 76.2	1-1/4 31.7	3/8 9.5	7/8 22.2	11/32 8.7	13/32 10.3	3/8	.6
24GE E (207) 2.835 72	35 1-3/16 1-1/4 1-5/16 1-3/8 1-7/16	4-1/8 104.8	5 127.0	3-3/8 85.7	1-1/4 31.7	3/8 9.5	7/8 22.2	11/32 8.7	15/32 11.9	7/16	.7
24GF F (208) 3.150 80	40 1-7/16 1-1/2 1-9/16 1-5/8	4-3/8 111.1	5-1/4 133.4	3-5/8 92.1	1-5/16 33.3	7/16 11.1	7/8 22.2	5/16 7.9	15/32 11.9	7/16	.8
24GG G (209) 3.346 85	45 1-1/2 1-5/8 1-11/16 1-3/4	4-3/8 111.1	5-1/4 133.4	3-5/8 92.1	1-5/16 33.3	7/16 11.1	7/8 22.2	5/16 7.9	17/32 13.5	1/2	.7
♦24GG/DSC♦ G (209) 3.346 85	45 1-1/2 1-5/8 1-11/16 1-3/4	4-3/4 120.65	5-3/4 146.1	4 101.6	1-5/16 33.3	7/16 11.1	7/8 22.2	5/16 7.9	17/32 13.5	1/2	.7
24GH H (210) 3.543 90	50 1-11/16 1-3/4 1-13/16 1-7/8 1-15/16 2	5-1/8 130.2	6-1/8 155.6	4-1/4 108.0	1-1/2 38.1	5/8 15.9	7/8 22.2	15/64 6.0	17/32 13.5	1/2	.8
24GI I (211) 3.937 100	55 1-15/16 2 2-1/16 2-1/8 2-3/16 2-1/4	5-3/8 136.5	6-3/8 161.9	4-1/2 114.3	1-1/2 38.1	5/8 15.9	7/8 22.2	3/16 4.7	17/32 13.5	1/2	.85
24GJ J (212) 4.331 110	60 2-3/16 2-1/4 2-5/16 2-3/8 2-7/16	6 152.4	7-1/8 180.9	5 127.0	1-7/8 47.6	7/8 22.2	1 25.4	3/16 4.7	19/32 15.1	1/2	
24GK K (214) 4.921 125	70 2-7/16 2-1/2 2-5/8 2-11/16 2-3/4	6-1/2 165.1	7-5/8 193.7	5-1/2 132.1	2 50.8	1 25.4	1 25.4	7/64 2.7	19/32 15.1	1/2	1.5
24GL L (215) 5.118 130	75 2-11/16 2-3/4 2-13/16 2-7/8 2-15/16 3	7-1/2 190.5	8-3/4 222.2	6-3/8 161.9	2-1/8 54.0	1-1/8 28.6	1 25.4	1/8 3.1	23/32 18.2	11/16	2.4
24GM M (216) 5.511 140	80 2-3/4 2-15/16 3 3-1/8 3-3/16	7-1/2 190.5	8-3/4 222.2	6-3/8 161.9	2-1/8 54.0	1-1/8 28.6	1 25.4	1/8 3.1	23/32 18.2	11/16	2.0

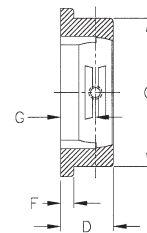
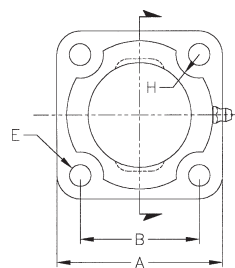
For mounted assemblies, see Sections:
ORANGE, AMBER, and Lt GREY

EDT POLYMER FOUR BOLT HOUSINGS

SERIES 4G_-01

Mounting pattern interchanges with:

Dodge	F4B-LMB
Dodge	F4B-BO



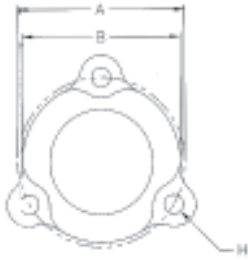
Load ratings for EDT polymer housings are limited only by the installed bearings

P/N GROUP (RING)	Shaft Diameter		A	B	C	D	E	F	G	H	Bolt Size	Wt. in lbs.
	mm	in.	in. mm	in. mm	in. mm	in. mm	in. mm	in. mm	in. mm	in. mm		
4GC-01 C (205) 2.047 52		1/2	3-1/8 79.4	2-1/4 57.15	2-3/4 70.1	63/64 25.1	13/32 10.3	1/4 6.35	21/32 16.6	7/16 11.2	3/8	.2
		5/8										
3/4												
4GD-01 D (206) 2.441 62		7/8	3-5/8 92.1	2-3/4 70.1	3-1/8 79.4	63/64 25.1	13/32 10.3	1/4 6.35	21/32 16.6	7/16 11.2	3/8	.2
		15/16										
1												

For mounted sets.....see page J-14 (AMBER)
 For solid bearing inserts.....see pages H-3&4 (WHITE)

EDT POLYMER THREE BOLT FLANGE HOUSING

SERIES 22G



Mounting pattern interchanges with:
 Dodge SC LF: LF-SC-
 Fafnir RFD, RFDR
 Hub City FB100-, FB110-
 Sealmaster LF-, LF-_E



Load ratings for EDT polymer housings are limited only by the installed bearings.

P/N Group (Ring)	Shaft Diameter		A	B	C	D	E	G	H	P/N	Bolt Size	Wt. in lbs.
	mm	inches	in. mm	in. mm	in. mm	in. Mm	in. mm	In. mm	In. mm			
22GA A (203) 1.575 40	12	1/2	2.39	2.369	11/16	3/8	5/16	27/64	9/32	22GA-01	1/4	0.1
	15	9/16	60.7	60.17								
22GB B (204) 1.850 47	12	1/2	2-13/16	2-1/2	25/32	27/64	23/64	29/64	11/32	22GB	5/16	0.1
	15	9/16										
22GC C (205) 2.047 52	17	5/8	3	2-13/16	27/32	1/2	11/32	33/64	11/32	22GC	5/16	0.12
	20	11/16										
22GD D (206) 2.441 62	25	7/8	3-9/16	3-3/8	7/8	15/32	13/32	39/64	13/32	22GD	3/8	0.2
	30	15/16										
22GE E (207) 2.835 72	1	1	3-15/16	3-5/8	15/16	21/32	7/16	11/16	13/32	22GE	3/8	0.23
	35	1-1/16										
22GF F (208) 3.150 80	1-1/16	1-1/4	4-11/16	4-1/8	1-1/8	5/8	1/2	17/32	13.5	22GF	1/2	
	40	1-1/2										
22GG G (209) 3.346 85	1-5/8	1-5/8	4-3/4	4-1/2	1-1/8	5/8	1/2	17/32	13.5	22GG	1/2	
	45	1-11/16										
22GH H (210) 3.543 90	1-3/4	1-3/4	5	4-5/8	1-1/8	5/8	1/2	17/32	13.5	22GH	1/2	
	50	1-13/16										
		1-7/8										
		1-15/16										
		2										

Round bolt holes are standard.
 Square bolt holes are available - if required, please call for price and lead time.

For mounted assemblies, see Sections:
 ORANGE, AMBER and Lt GREY

ENGINEERING NOTES