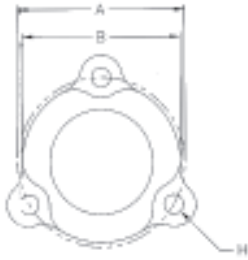


# EDT POLYMER THREE BOLT FLANGE HOUSING

## SERIES 22G



Mounting pattern interchanges with:  
 Dodge SC LF: LF-SC-  
 Fafnir RFD, RFDR  
 Hub City FB100-, FB110-  
 Sealmaster LF-, LF-\_E



Load ratings for EDT polymer housings are limited only by the installed bearings.

P/N Group (Ring)	Shaft Diameter		A	B	C	D	E	G	H	P/N	Bolt Size	Wt. in lbs.
	mm	inches	in. mm	in. mm	in. mm	in. Mm	in. mm	In. mm	In. mm			
<b>22GA</b> A (203) 1.575 40	12	1/2	2.39	2.369	11/16	3/8	5/16	27/64	9/32	<b>22GA-01</b>	1/4	0.1
	15	9/16	60.7	60.17								
<b>22GB</b> B (204) 1.850 47	17	5/8	2-13/16	2-1/2	25/32	27/64	23/64	29/64	11/32	<b>22GB</b>	5/16	0.1
	20	11/16										
<b>22GC</b> C (205) 2.047 52	25	13/16	3	2-13/16	27/32	1/2	11/32	33/64	11/32	<b>22GC</b>	5/16	0.12
		7/8										
<b>22GD</b> D (206) 2.441 62	30	1	3-9/16	3-3/8	7/8	15/32	13/32	39/64	13/32	<b>22GD</b>	3/8	0.2
		1-1/16										
<b>22GE</b> E (207) 2.835 72	35	1-3/16	3-15/16	3-5/8	15/16	21/32	7/16	11/16	13/32	<b>22GE</b>	3/8	0.23
		1-1/4										
<b>22GF</b> F (208) 3.150 80	40	1-7/16	4-11/16	4-1/8	1-1/8	5/8	1/2		17/32	<b>22GF</b>	1/2	
		1-1/2										
<b>22GG</b> G (209) 3.346 85	45	1-1/2	4-3/4	4-1/2	1-1/8	5/8	1/2		17/32	<b>22GG</b>	1/2	
		1-5/8										
<b>22GH</b> H (210) 3.543 90	50	1-11/16	5	4-5/8	1-1/8	5/8	1/2		17/32	<b>22GH</b>	1/2	
		1-3/4										
		1-13/16										
		1-7/8										
		1-15/16										
		2										

Round bolt holes are standard.  
 Square bolt holes are available - if required, please call for price and lead time.

For mounted assemblies, see Sections:  
 ORANGE, AMBER and Lt GREY